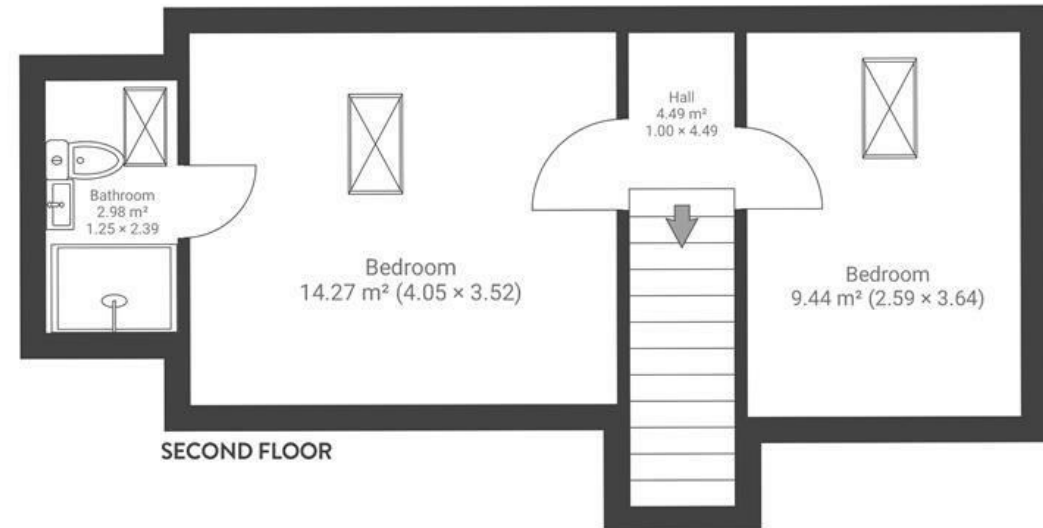
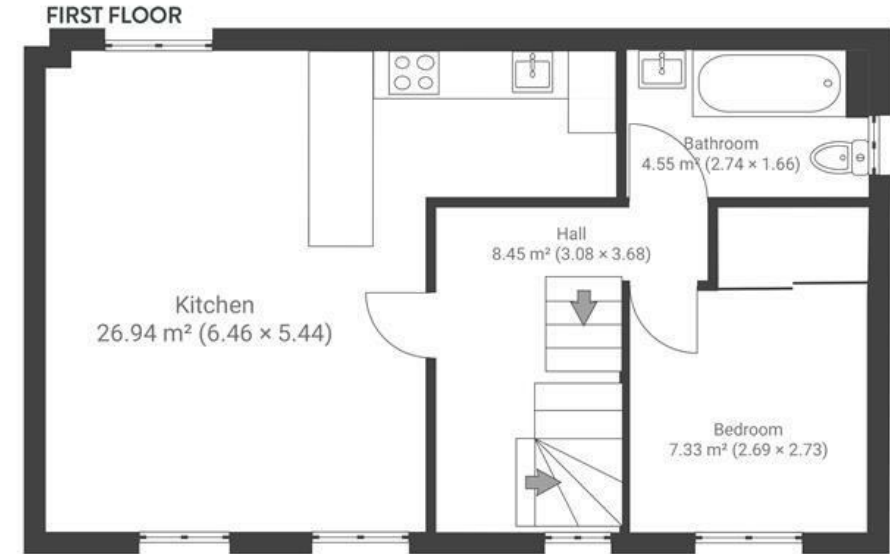
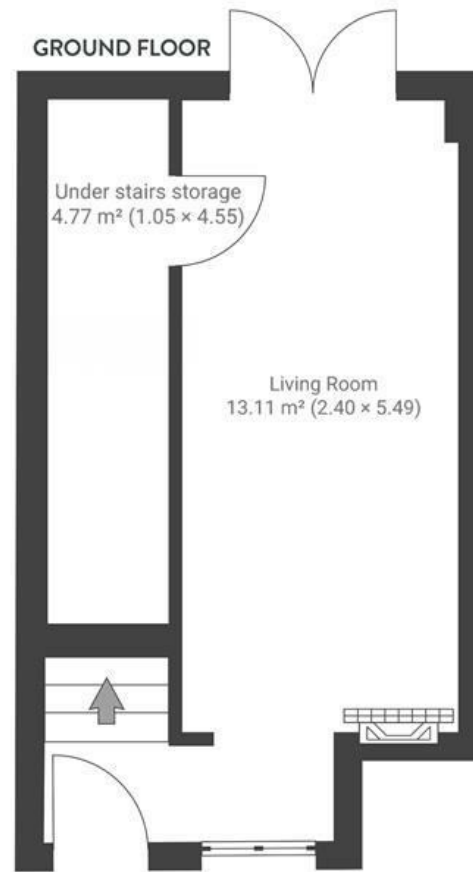


# Bridge View Close

## EASTON

APPROXIMATE FLOOR AREA  
104 SQM / 1120 SQFT



Boardwalk

# Bridge View

EASTON, BRISTOL

£

£425,000



BS5 6BS

zzz

3 Bedrooms



2 Bathrooms

*"An evening stroll along the cycle path on a warm evening, the bustle of people commuting home by bike or on foot, the birds singing and children in bike trailers whizzing past. Our evening walk took us through Greenbank cemetery which has a golden light as the sun sets and is so tranquil. Then back via St Marks Rd, the smells of delicious food wafting through the streets, the beautiful mosque dome lit up with coloured lights as people enjoy an evening drink outside of the Thali/Garden of Easton"*

