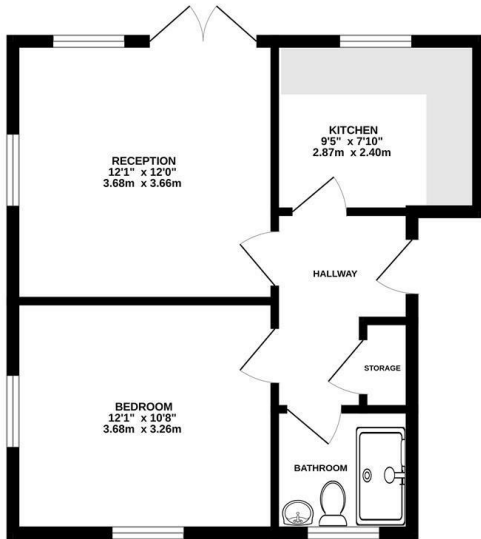




Keith
Ashton

Sawyers Hall Lane,
Brentwood

GROUND FLOOR
442 sq.ft. (41.1 sq.m.) approx.



TOTAL FLOOR AREA: 442 sq.ft. (41.1 sq.m.) approx.
Measurements are approximate. Not to scale. Illustrative purposes only.
Made with Homestyler ©2023

£250,000



Flat 2 Argyll Court Sawyers Hall Lane, Brentwood, CM15 9BQ

We are pleased to present this ground floor apartment, superbly situated less than half a mile from Brentwood High Street and conveniently close to the mainline station, providing excellent transport links into London and a wide range of local amenities.

Accessed via a secure communal entrance, the property opens into a welcoming hallway leading to a spacious dual-aspect living room, featuring double patio doors that open onto a private patio leading out to the communal gardens. The kitchen is well-appointed with a range of eye and base level units and space for freestanding appliances. The bedroom is a well-proportioned double, also benefiting from dual-aspect views, while the bathroom completes the internal accommodation. Externally, the property further benefits from two allocated parking spaces.

Energy Efficiency Rating		Environmental Impact (CO ₂) Rating	
Very energy efficient - lower running costs	Current	Target	Present
(81-91) A			
(61-80) B			
(41-60) C			
(21-40) D			
(1-20) E			
(1-20) F			
(1-20) G			

Energy Efficiency Rating		Environmental Impact (CO ₂) Rating	
Very energy efficient - lower running costs	Current	Target	Present
(81-91) A			
(61-80) B			
(41-60) C			
(21-40) D			
(1-20) E			
(1-20) F			
(1-20) G			

EU Directive 2002/91/EC

SERVICES:

Local Authority: Brentwood
Council tax band: C
Post code: CM15 9BQ

VIEWING:

Strictly by prior arrangement with Keith Ashton Estate Agents

OPENING HOURS:

Monday to Friday: 8.45AM - 6.30PM | Saturdays: 9AM - 5.30PM | Sundays: 10AM - 2PM

MORTGAGE INFORMATION: We offer the additional facility of an in-house Independent Financial Adviser who will access all mortgage lenders with the purpose of providing you with the benefit of choice. For quotations or comparables please call 01277 260858 or visit our interactive website at www.mortgagebusiness.net



We the Agent have not tested any apparatus, fittings or services for this property. The plot size is intended merely as a guide and has not been officially measured or verified by the Agent. Photographs are for illustration only and may depict items which are not for sale or included in the sale of the property. As part of the service we offer we may recommend ancillary services to you which we believe may help you with your property transaction. We wish to make you aware, that should you decide to use these services we will receive a referral fee. For full and detailed information please visit 'terms and conditions' on our website www.keithashton.co.uk

Brentwood
Tel. 01277 260858

Village Office
Tel. 01277 375757

Lettings Office
Tel. 01277 202200

Explore more @ www.keithashton.co.uk

