



5 Morley Street

Kettering, Northamptonshire NN16 9LJ



Simpson & Partners

Situated on the sought-after North End of Kettering, this larger-than-average three bedroom bay fronted mid terrace property offers a wonderful blend of character and modern convenience. Ideally located within a short stroll of Kettering's Pleasure Park and Kettering Park Junior Academy, with the town centre just a short drive away, this home is perfectly placed for family living.

The property benefits from UPVC double glazing and gas radiator heating, ensuring year-round comfort and efficiency. The well-proportioned accommodation comprises a welcoming entrance hall leading into a stunning 24' bay fronted lounge/dining room, featuring a charming log burner that creates a warm and inviting focal point. To the rear, a spacious 23ft kitchen/breakfast room provides the perfect hub of the home, complete with a built-in stainless steel oven, gas hob and extractor hood over. A handy utility room and a convenient downstairs WC complete the ground floor layout.

Moving up to the first floor, you will find three generously sized bedrooms, with the master bedroom boasting beautiful stripped and stained exposed floorboards alongside an attractive cast iron fireplace, adding a real sense of character. The luxury fitted bathroom suite offers a touch of indulgence and finishes the first floor perfectly.

Externally, the property enjoys a pleasant front garden and a low maintenance rear garden, ideal for those seeking outdoor space without the upkeep. With so much on offer, an internal viewing is highly recommended to fully appreciate everything this lovely home has to provide and to avoid any disappointment.

Price £240,000



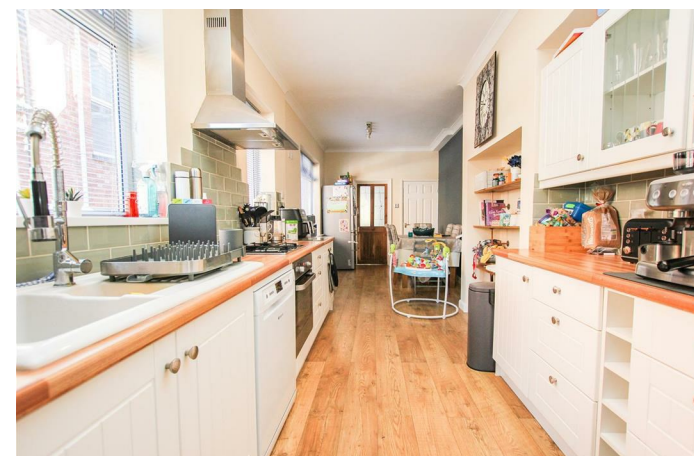
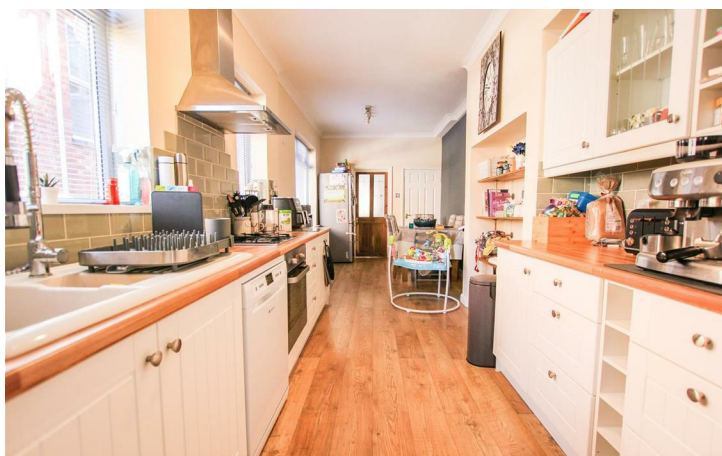
3



1

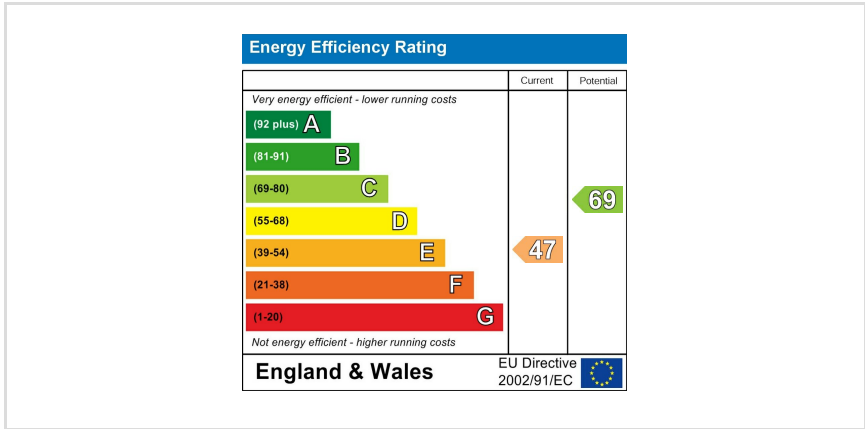


1





Whilst every attempt has been made to ensure the accuracy of the floor plan contained here, measurements of doors, windows, stairs and any other items are approximate and no responsibility is taken for any error, omission, or mis-statement. The plan is copyright to Simpson and Partners and is for illustrative purposes and should only be used as such by any prospective purchaser. The services, systems and appliances shown have not been tested and no guarantee as to their operability can be given. Made with Metrepro (2020).



When you buy with Simpson and Partners, you know **you'll be in safe hands**. From the moment you walk through our doors, we'll make you **feel truly welcome**. Our sales consultants and financial advisors will take you through **every step of the process**, offering **free expert advice** along the way, from help choosing the right mortgage and insurance through to finding your conveyancer. And if you need help selling your home too, **with over 20 years of local experience, you can trust us to get you moving**.



**Simpson  
& Partners**

Making Every  
Journey Personal



01536 518200

[kettering@simpsonandpartners.co.uk](mailto:kettering@simpsonandpartners.co.uk)

<https://www.simpsonandpartners.co.uk/>

1 Silver Street, Kettering, Northants, NN16 0BN