

## Rita Road, SW8

£675,000

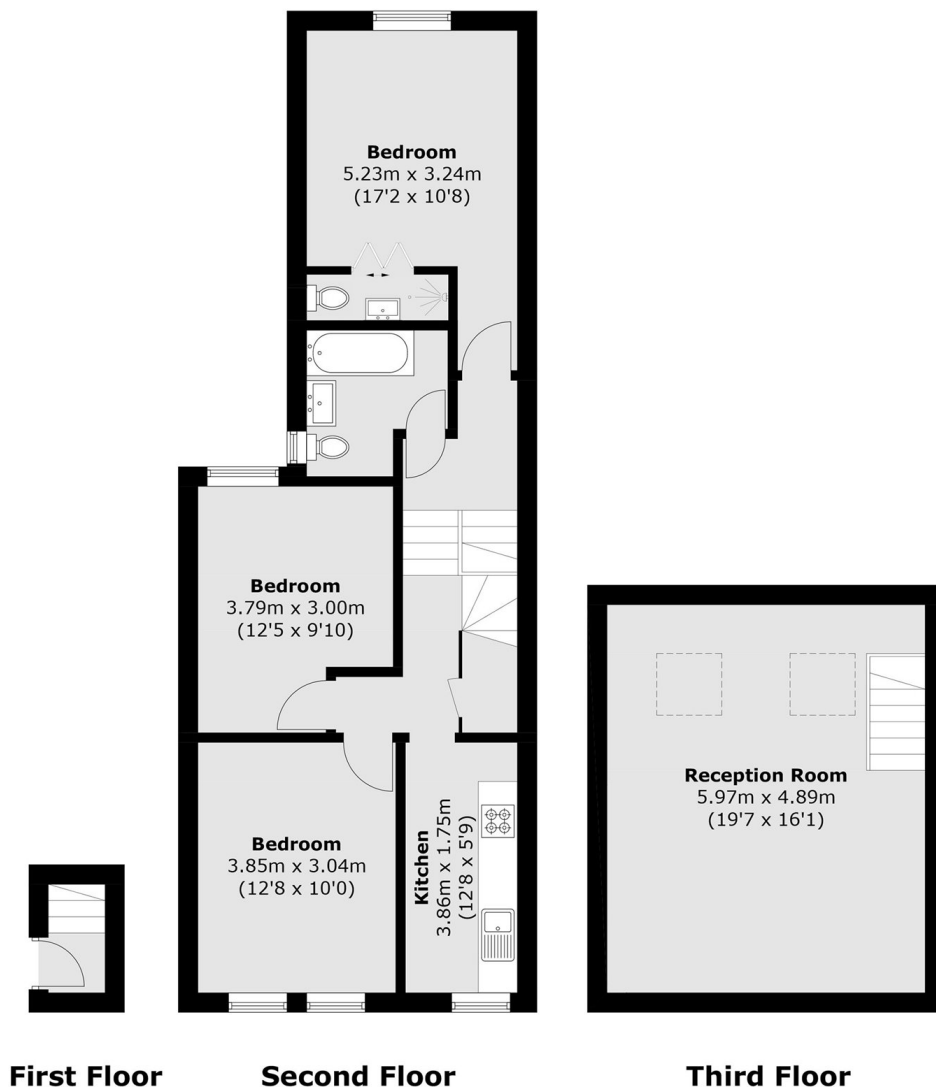
This fantastic and beautifully proportioned, split level three double bedroom character home offering 988 sq. Ft. Fully renovated throughout and therefore presented in excellent condition throughout. The first floor has a separate shaker-style kitchen, thoughtfully designed with both practicality and charm in mind. The master bedroom has a stylish ensuite shower room and there are two further double bedrooms served by a well finished bathroom. The large reception room is located on the top floor and is a great space to relax and unwind. The apartment combines character, space and modern comfort ready for the next owners to move straight in and make it their own.

Rita Road is a peaceful street located within a low traffic conservation zone, perfectly positioned within walking distance of fantastic schools local amenities including the Fentiman and Canton Arms pubs, shops and cafes. There are unbeatable transport links including Nine Elms,

### Features

Three Double Bedrooms  
No Onward Chain,  
Split Level  
988sqft  
Excellent Potential  
Bright and Spacious

# Rita Road, London, SW8



Total area (approx.): 91.8 sq. m (988.1 sq. ft)