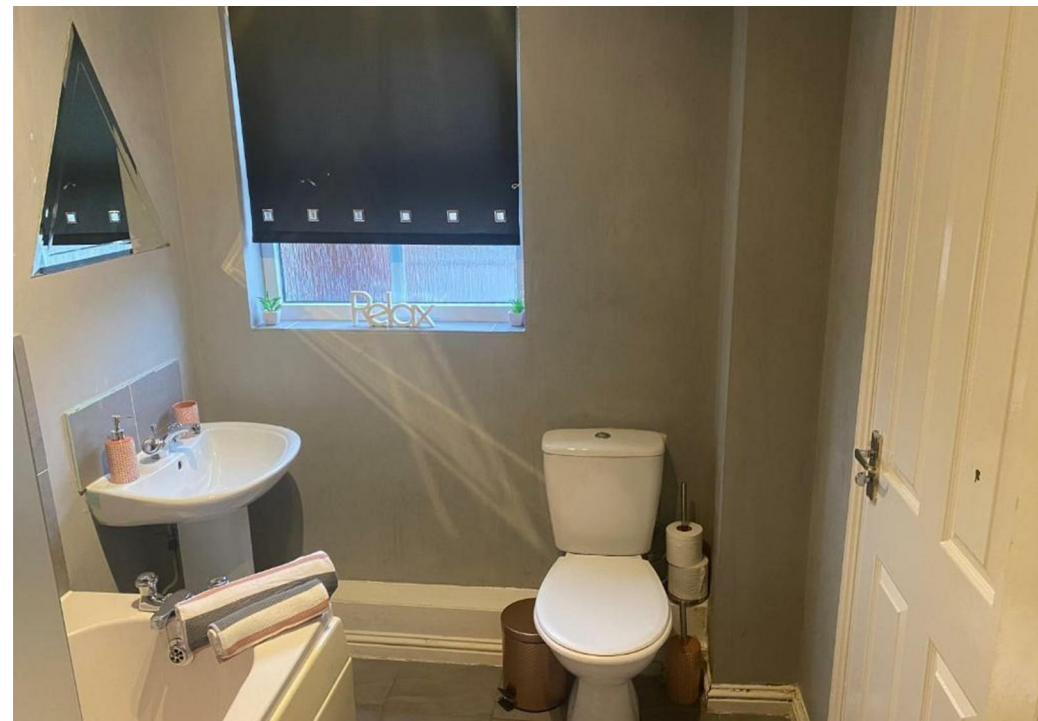
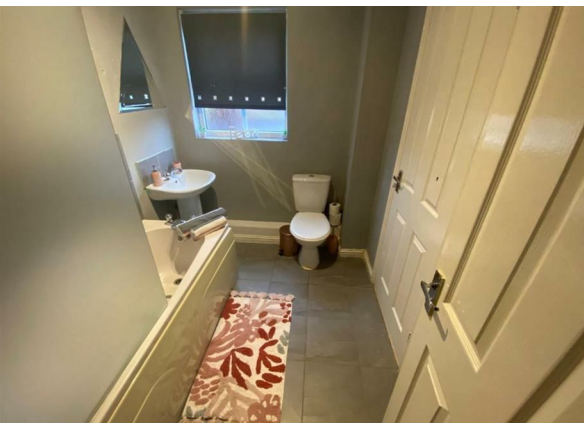


Flat 2, Rochdale Road, Manchester, M9 8AE

£120,000

Council Tax Band:



Open House Estate Agent is delighted to present this modern 2-bedroom flat, located in the highly sought-after area of 945 Rochdale Road in Manchester.

Located on ground floor of a well-maintained building at 945 Rochdale Road, this stylish 2-bedroom flat, in a move-in-ready offers great home for first-time buyers, young professionals, or buy-to-let investors.  
Well-presented throughout, the property comprises a spacious open-plan lounge diner, fully fitted kitchen, includes integrated appliances and ample storage.

The two bedrooms are spacious double bedrooms and modern bathroom.

The property has private allocated parking included.

Located in excellent transport links via regular bus routes and nearby train stations. Local amenities, shops, and schools are all close at hand, Close to the Metrolink Tram network, as well as buses. Just a 15-minute bus ride to Manchester city centre.

Viewing is Highly Recommended!



Open House North West Manchester



Energy Efficiency Rating		
	Current	Potential
Very energy efficient - lower running costs		
(92 plus) A		
(81-91) B		
(69-80) C		
(55-68) D		
(39-54) E		
(21-38) F		
(1-20) G		
Not energy efficient - higher running costs		
England & Wales	EU Directive 2002/91/EC	