



Herbrand Street, WC1N

£2,816 Per calendar month

A well presented flat in the heart of Bloomsbury. Neutrally decorated, the flat has wooden floors throughout, two bedrooms, a spacious lounge and a separate eat-in kitchen.

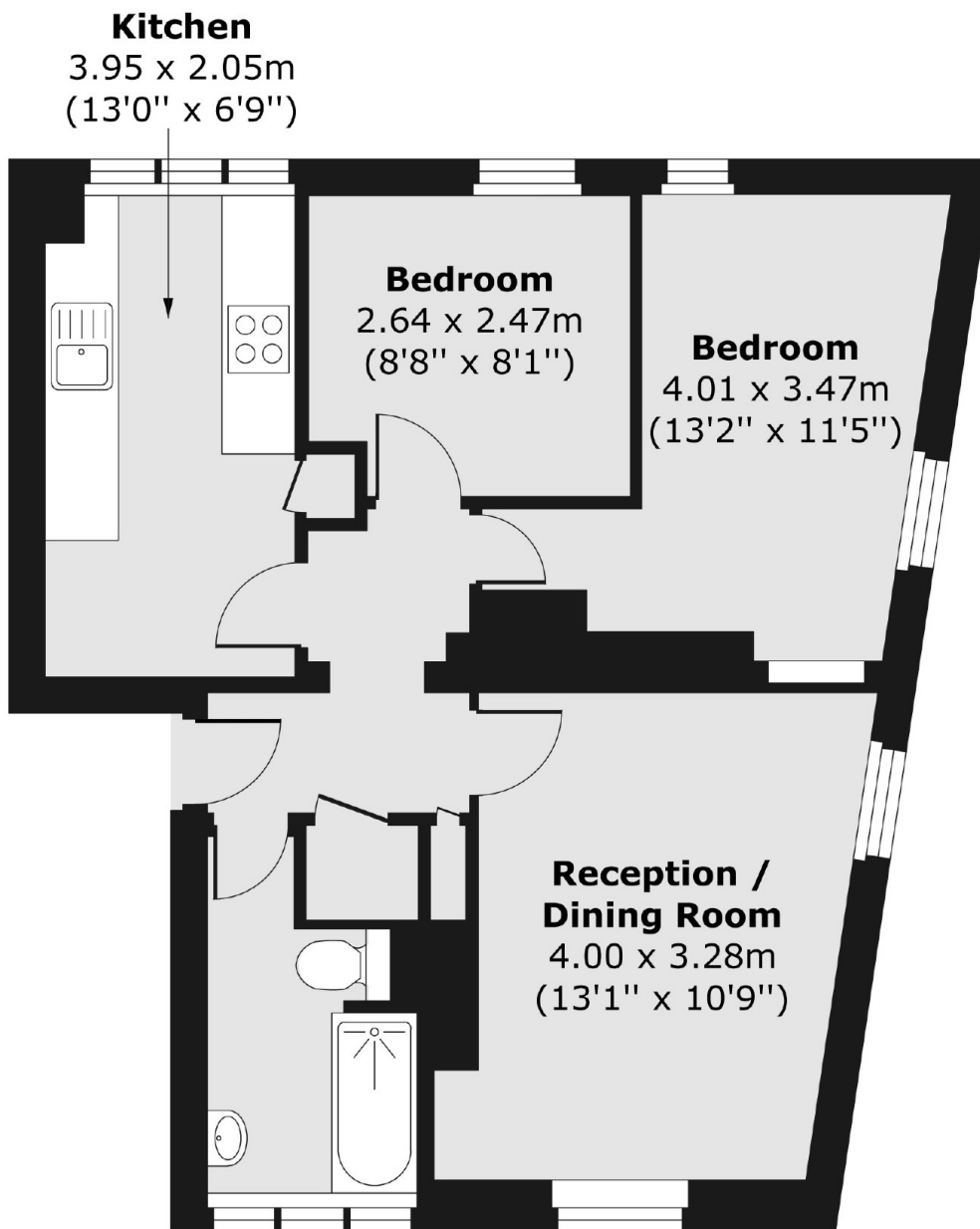
Russell Square and mainline stations Euston, St Pancras and Kings Cross are all within walking distance. The Brunswick Centre is located only moments away contains a wide selection of high street retailers and restaurants.

Features

- Red Brick Mansion Block
- Two Bedrooms
- Ideal For Sharers
- Eat-in Kitchen
- UCL & SOAS Nearby
- Available Now

Herbrand Street, London, WC1N

Second Floor



Total area (approx.) 49.83 sq. m (536 sq. ft)