



PORCHESTER SQUARE, W2

£1,200,000

Open plan kitchen reception

Garden square views

Three bedrooms

Private balcony

Duplex living

EPC- C

ABOUT THE PROPERTY

An exceptional three bedroom duplex residence in Porchester Square, offering beautifully presented accommodation, complemented by wonderful south-facing views across the square's gardens.

Porchester Square is superbly positioned close to a large Waitrose and the vibrant shops, cafés and restaurants of Westbourne Grove and Queensway. Excellent transport links are nearby, including Royal Oak and Bayswater stations, with Paddington Station (0.8m) also easily accessible.

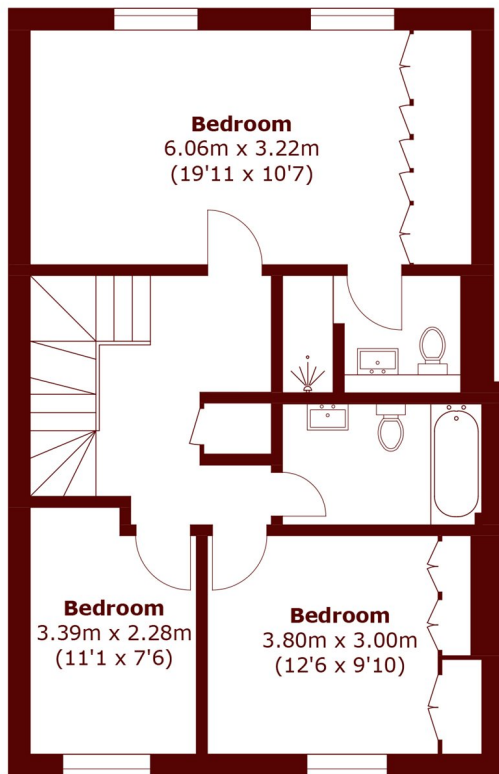




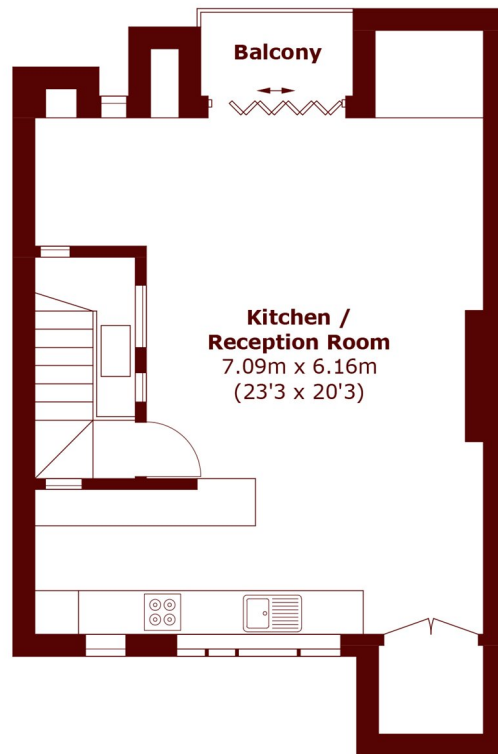




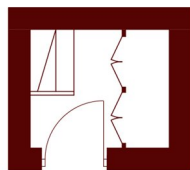
STEP INSIDE PORCHESTER SQUARE



Third Floor



Fourth Floor



Second Floor

Total area (approx.): 112.4 sq. m (1,209.8 sq. ft)
Balcony : 2.4 sq. m (25.8 sq. ft)

Notting Hill
020 7313 2890

Energy Rating: C We aim to make our particulars both accurate and reliable. However, they are not guaranteed; nor do they form part of an offer or contract. If you require clarification on any points then please contact us, especially if you're traveling some distance to view. Please note that appliances and heating systems have not been tested and therefore no warranties can be given as to their good working order

**MARSH &
PARSONS**