

Myrtle Road, Heeley, Sheffield

Offers In Region Of £180,000

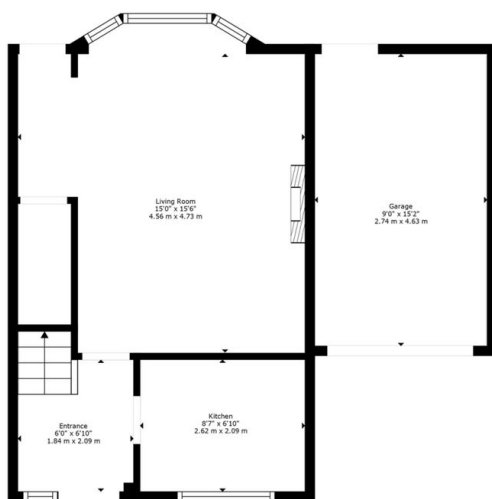
3 1 1



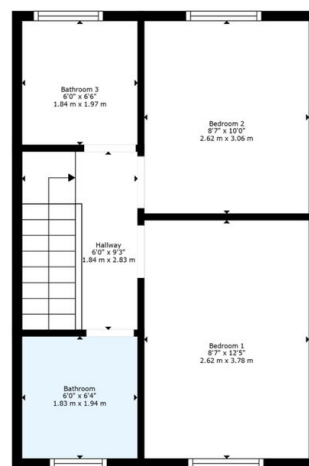
|| CHAIN FREE || Located on the brow of the hill, with one of the most fantastic view points of Sheffield's skyline, is this three bedroom larger than average end of terrace benefitting from off street parking, a garage and a private garden.

Key Features

- Three Good Sized Bedrooms
- Off Street Parking And Garage
- Stunning Views Across Sheffield
- Schools, Shops & Transport Links Nearby
- Modern Shower Room Recently Fitted
- Well Maintained Throughout
- Private Rear Garden
- Ideal Family Home
- No Onwards Chain
- Early Viewing Is Advised



Floor 1



Floor 2