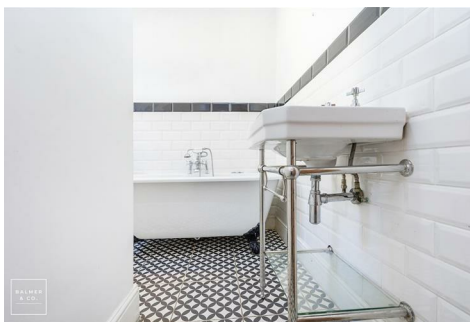
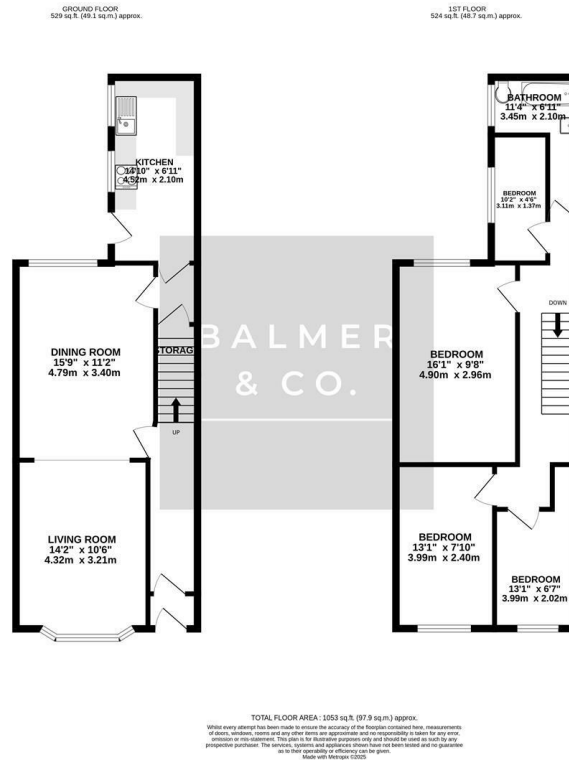


Wilkinson Street, Leigh, WN7 4DQ
Offers Over £165,000

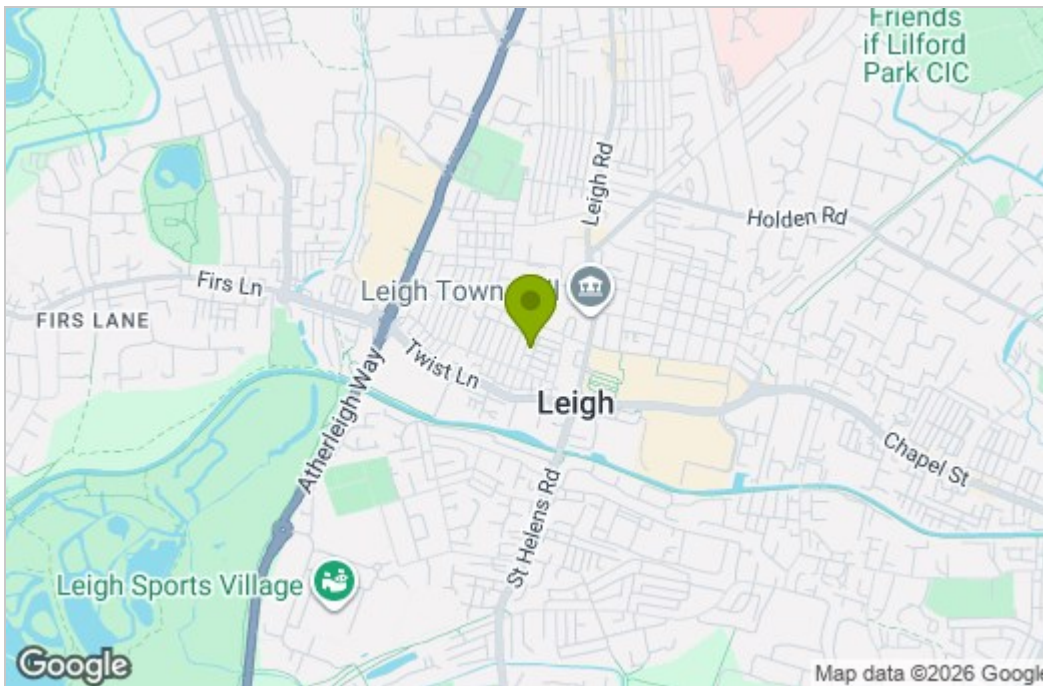


BALMER & CO in LEIGH are delighted to offer FOR SALE this fantastic four bedroom mid-terrace house close to Leigh town centre. Offered with NO ONWARD CHAIN, this larger than average property offers excellent family living accommodation including two reception rooms and is very nicely presented throughout. Comprising in brief of entrance porch, hallway, bay fronted living room with log burning stove, dining room, with a fitted kitchen completing the ground floor. To the first floor is a large double bedroom, three further single bedrooms, with a three piece family bathroom completing the accommodation on offer. Externally the property is garden fronted, whilst to the rear there is a low maintenance, fully enclosed yard. Early viewings highly recommended, all enquiries welcome.

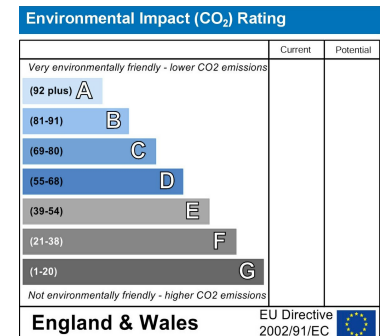
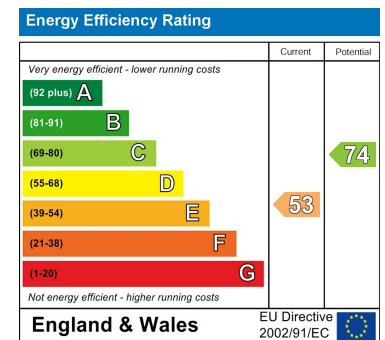
Floor Plan



Area Map



Energy Efficiency Graph



These particulars, whilst believed to be accurate are set out as a general outline only for guidance and do not constitute any part of an offer or contract. Intending purchasers should not rely on them as statements of representation of fact, but must satisfy themselves by inspection or otherwise as to their accuracy. No person in this firm's employment has the authority to make or give any representation or warranty in respect of the property.