



Marlow Crescent, TW1

£1,995 Per calendar month

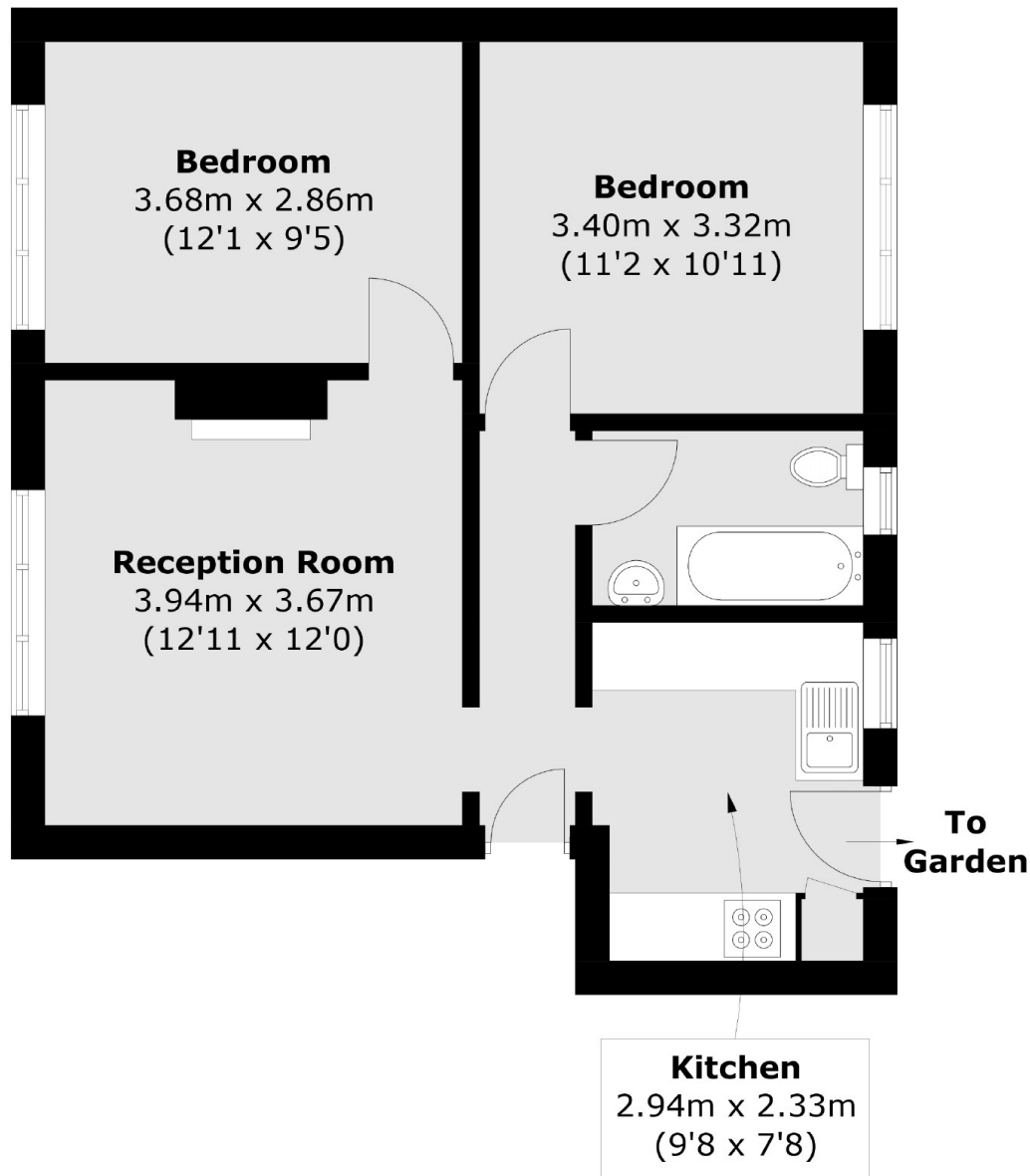
A spacious first floor two bedroom flat located 0.7 miles from Twickenham mainline station. The property has a spacious reception room, separate kitchen, two double bedrooms and a large private garden.

Marlow Crescent is conveniently located for access into Twickenham where you will find fast trains to London Waterloo. The Property is also just around the corner from the A316 which leads to central London and also out to the M3.

Features

- First Floor
- Private garden
- Excellent Location
- Two double bedrooms
- Close to Twickenham Station

Marlow Crescent, Twickenham, TW1



Total area (approx.): 53.3 sq. m (573.7 sq. ft)