



LONGSTOCK COURT

Eastleaze, Swindon, Wiltshire SN5 7EW

**Longstock Court,
Eastleaze, Swindon SN5 7EW**

- AVAILABLE NOW
- First Floor Maisonette
- One Bedroom
- Off Road Parking
- Unfurnished
- Good Location
- Lounge/Diner
- Kitchen
- Bathroom

£800 PCM



*** AVAILABLE NOW *** We are pleased to offer this well presented one bedroom maisonette offered part furnished/unfurnished. Situated in a quiet cul de sac location, within walking distance to the West Swindon Shopping Centre and Shaw Ridge Leisure Centre. The accommodation comprises of lounge/diner, kitchen, bedroom and bathroom. The property also benefits from off road parking. Viewing is highly recommended.

Viewings

Strictly via our Swindon office telephone (01793) 641641.

Tenant Information

Council: Swindon Borough Council

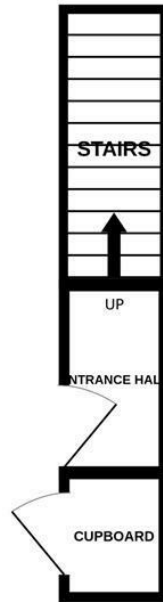
Tax Band: A

Sizes

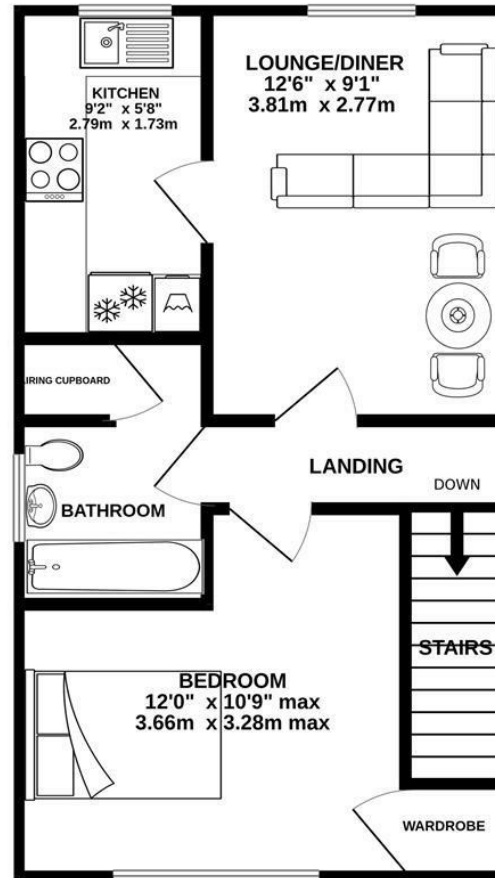
Please note, all measurements of room sizes given are not guaranteed and figures are for guidance only.



GROUND FLOOR
54 sq.ft. (5.0 sq.m.) approx.



1ST FLOOR
389 sq.ft. (36.2 sq.m.) approx.



TOTAL FLOOR AREA : 444 sq.ft. (41.2 sq.m.) approx.

Whilst every attempt has been made to ensure the accuracy of the floorplan contained here, measurements of doors, windows, rooms and any other items are approximate and no responsibility is taken for any error, omission or mis-statement. This plan is for illustrative purposes only and should be used as such by any prospective purchaser. The services, systems and appliances shown have not been tested and no guarantee as to their operability or efficiency can be given.
Made with Metropix ©2023

01793 641641

101 Commercial Road, Swindon, SN1 5PL

info@primaryhomesandlettings.co.uk

