



Dovecote Gardens, SW14

£380,000



- One Bedroom
- First Floor
- Light
- Spacious
- Allocated Parking Space
- Excellent Transport Links





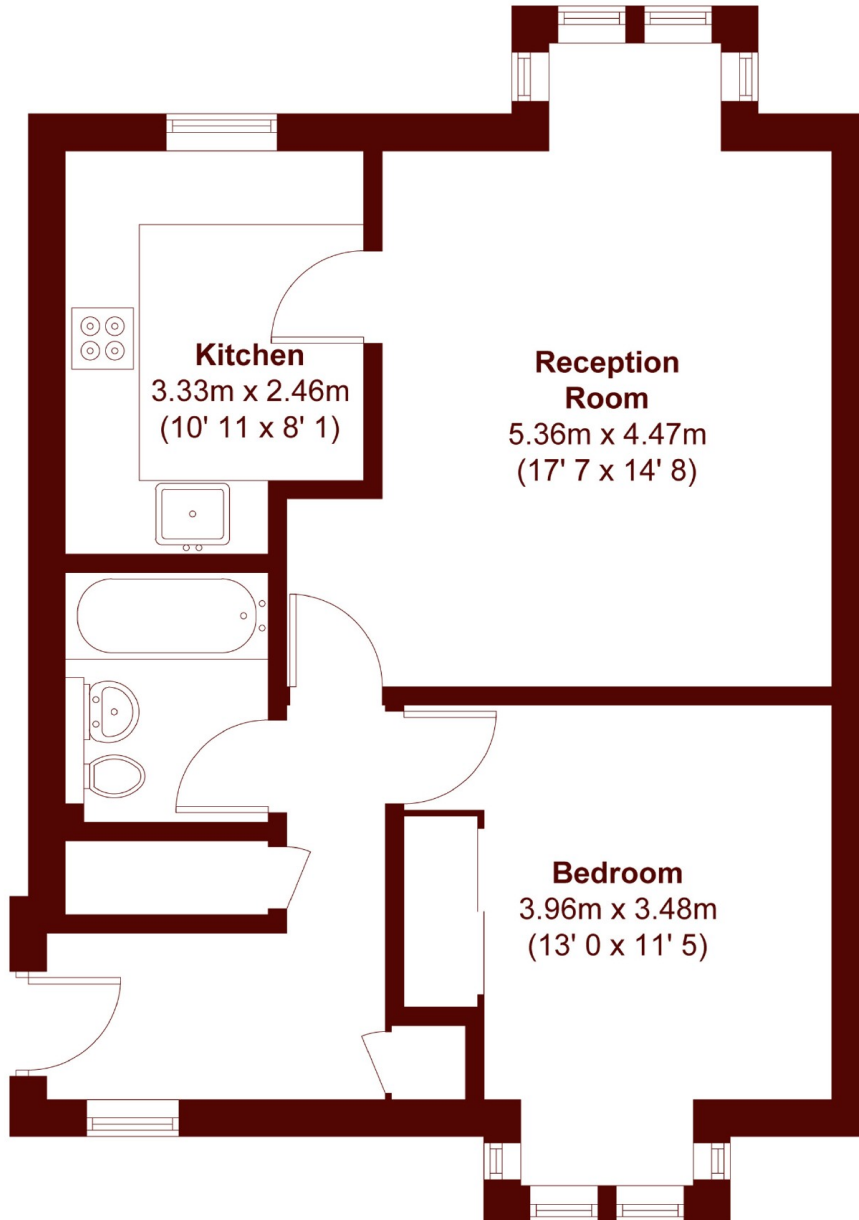
ABOUT THE PROPERTY

Marsh & Parsons are delighted to be marketing this first floor one bedroom apartment, located on this highly desirable road in Mortlake, with excellent transport links, and is close to the River Thames.

The property is located on the first floor, with accommodation arranged to provide a spacious hall area, a light and spacious sitting/dining area, a double bedroom with fitted wardrobes, and a kitchen and well sized bathroom. The property is enhanced by gas heating and an allocated parking space.

Avondale Road is conveniently placed for the amenities of White Hart Lane and Barnes Village. For the commuter, both Barnes Bridge and Mortlake Stations are a short walk away, along with the 209 bus. The property would be ideal for a first time buyer, buy to let, or even a second home.





APPROX. GROSS INTERNAL FLOOR AREA
565 SQFT / 52.5 SQM

Marsh & Parsons Barnes

73-75 Church Road, London,
SW13 9HH
020 8563 8333