



Elim Estate, SE1

£350,000

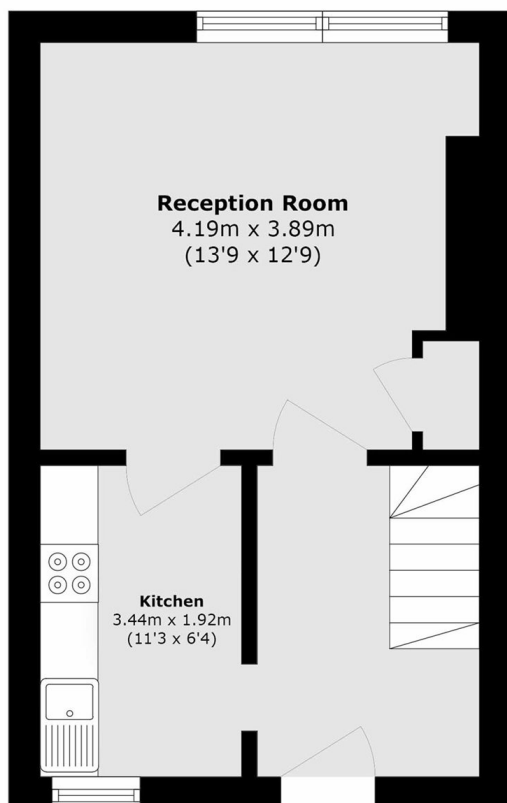
Guide Price: £350,000 - £370,000 A highly attractive duplex apartment with a desirable southerly aspect, offering bright and well-proportioned accommodation. The property features a spacious living room, a separate kitchen, a generous double bedroom, and a modern three-piece bathroom. Offered for sale chain-free, making it an ideal opportunity for both first-time buyers and investors.

Weston Street is enviably located in the heart of SE1, moments away from the vibrant Bermondsey Street, London Bridge Station, the Shard and Borough Market, with excellent links across the City and numerous attractions on your doorstep.

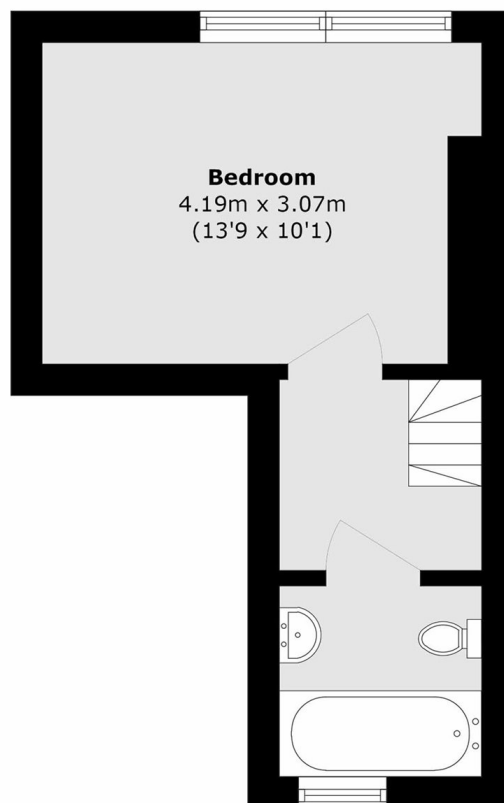
Features

- Duplex Apartment
- Separate Kitchen & Living Room
- One Double Bedroom
- Southerly Aspect
- Secure Entry
- Chain Free Sale

Elim Estate, London, SE1



Second Floor



Third Floor

Total area (approx.): 51.5 sq. m (554.3 sq. ft)