



HIGHFIELD ROAD
WIMBORNE, BH21 3PD



GUIDE PRICE £550,000

- 3/4 BEDROOM SEMI-DETACHED FAMILY HOME
- DESIRABLE VILLAGE OF CORFE MULLEN
- EXTENSIVELY MODERNISED IN RECENT YEARS
- SPACIOUS AND VERSATILE
- KITCHEN/DINING ROOM WITH ADJOINING CONSERVATORY
- ENSUITE BATHROOM AND 2 SHOWER ROOMS
- SLEEK DORMA EXTENSION
- LOW MAINTENANCE PRIVATE REAR GARDEN
- AMPLE OFF ROAD PARKING
- CLOSE TO WELL REGARDED SCHOOLS & LOCAL AMENITIES

This renovated semi-detached home boasts a striking exterior with a sleek dormer extension, large windows, and a welcoming entrance. The upstairs features a light and airy open lounge, enhanced by 3m bi-fold doors and patio doors that open to balconies on either end, creating a seamless indoor-outdoor flow. The upstairs also includes a modern bathroom, and bedroom with French doors leading to a back balcony. Downstairs offers a master bedroom with an en-suite and built-in wardrobes, a bedroom/study, additional bedroom, wet room, large kitchen-diner, lounge, and a sunlit conservatory. The versatile configuration allows for easy adaptation into additional rooms, while the low-maintenance garden with artificial lawn and generous driveway add practicality and curb appeal.

Versatile Layout: Features a highly adaptable design, including a stunning upstairs open lounge that can be opened on either side with 3m bi-fold doors and patio doors leading to balconies. In addition, there is a bedroom with French doors opening onto a back balcony and a stylishly fitted bathroom. The light and airy upstairs space enhances its appeal.



Downstairs Flexibility: Includes a master bedroom with en-suite bath and built-in wardrobes, a third good-sized bedroom, bedroom/study, wet room, large kitchen-diner, cozy lounge, and a bright conservatory, all offering potential for reconfiguration.

Outdoor Space: Low-maintenance garden with artificial lawn and a large driveway offering ample parking.

Prime Location: Just a stone's throw from Rushcombe First School and Rushcombe Montessori Nursery (on the same road), with Corfe Hills School, Henbury View First School, and Springdale First School in the vicinity - offering a great selection of schools nearby. Also 0.46 miles from the post office and 0.72 miles from a petrol station, with excellent local amenities and transport links.

Additional Information

Energy Performance Rating: C

Council Tax Band: D

Tenure: Freehold

Accessibility / Adaptations: Wet room

Flood Risk: Very low but refer to gov.uk, check long term flood risk

Flooded in the last 5 years: No

Conservation area: No

Listed building: No

Tree Preservation Order: No

Parking: Private driveway

Utilities: Mains electricity, mains gas, mains water

Drainage: Mains sewerage

Broadband: Refer to Ofcom website

Mobile Signal: Refer to Ofcom website



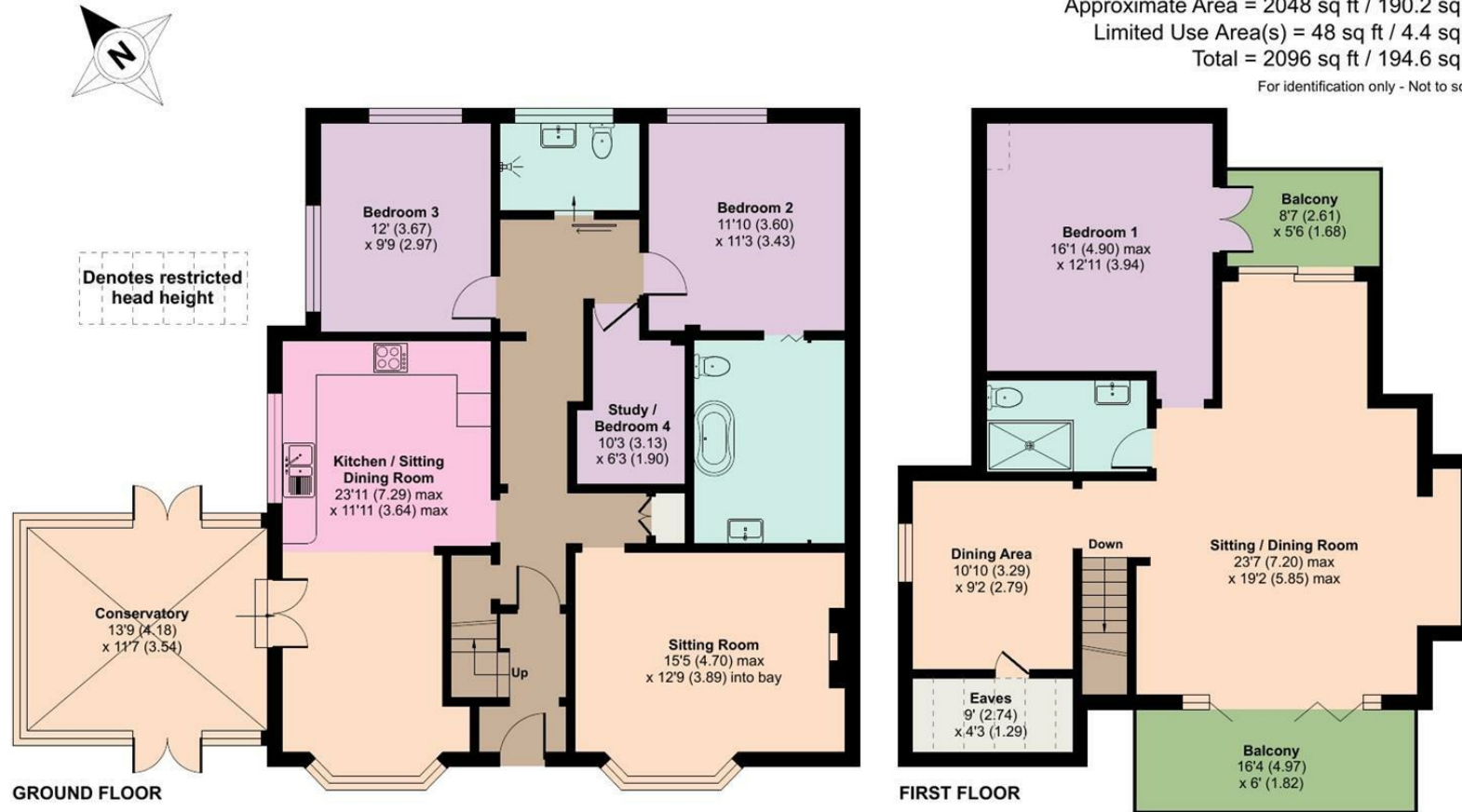
Highfield Road, Corfe Mullen, Wimborne, BH21

Approximate Area = 2048 sq ft / 190.2 sq m

Limited Use Area(s) = 48 sq ft / 4.4 sq m

Total = 2096 sq ft / 194.6 sq m

For identification only - Not to scale



Floor plan produced in accordance with RICS Property Measurement Standards incorporating International Property Measurement Standards (IPMS2 Residential). © nldhecom 2025. Produced for Edwards Estates Ltd. REF: 1358155



These particulars are believed to be correct but their accuracy is not guaranteed and they do not form part of any contract. Whilst every effort is made to ensure the accuracy of these details, it should be noted that the above measurements are approximate only. Floorplans are for representation purposes only and prepared according to the RICS Code of Measuring Practice by our floorplan provider. Therefore, the layout of doors, windows and rooms are approximate and should be regarded as such by any prospective purchaser. Any internal photographs are intended as a guide only and it should not be assumed that any of the furniture/ fittings are included in any sale. Where shown, details of lease, ground rent and service charge are provided by the vendor and their accuracy cannot be guaranteed, as the information may not have been verified and further checks should be made either through your solicitor/conveyancer or by referring to the home information pack for this property. Where appliances, including central heating, are mentioned, it cannot be assumed that they are in working order, as they have not been tested. Please also note that wiring, plumbing and drains have not been checked.

Ferndown Office

404 Ringwood Road, Ferndown, Dorset, BH22 9AU • www.edwardstates.com
01202 855595