



5 Caer Castell House Coychurch Road, Bridgend

£125,000 Leasehold

Ground Floor Apartment • Two Double Bedrooms • Bathroom & En-Suite to Primary Bedroom • Spacious Open Plan Lounge/Kitchen • One Allocated Parking Space • Renovated Throughout, Immaculate Condition • Ideal Purchase For First Time Buyers • A Must To View • Easy Access To M4 Corridor, Walking Distance To Shops, Amenities, GP Surgery • NO ONGOING CHAIN

DanielMatthew
ESTATE AGENTS



Renovated ground floor two bedroom apartment with en-suite, open plan lounge/kitchen, allocated parking, secure entry, close to shops, schools, transport links. No chain. Ideal for first time buyers.

Council Tax band: C

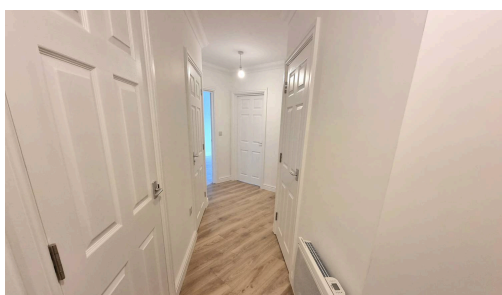
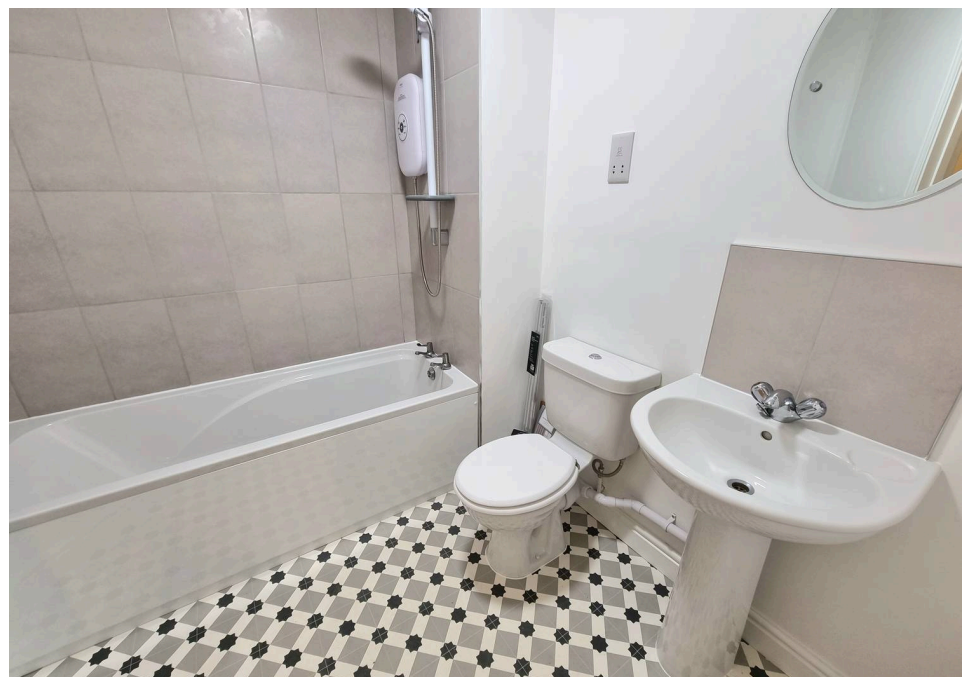
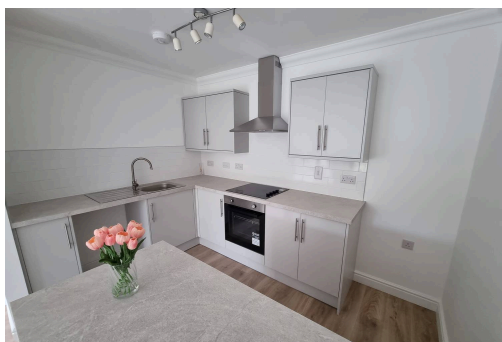
Tenure: Leasehold

EPC Energy Efficiency Rating: C

EPC Environmental Impact Rating:



- Ground Floor Apartment
- Two Double Bedrooms
- Bathroom & En-Suite to Primary Bedroom
- Spacious Open Plan Lounge/Kitchen
- One Allocated Parking Space
- Renovated Throughout, Immaculate Condition
- Ideal Purchase For First Time Buyers
- A Must To View
- Easy Access To M4 Corridor, Walking Distance To Shops, Amenities, GP Surgery
- NO ONGOING CHAIN





Hallway

Enter via fire door leading into hallway, plastered ceiling with coving, plastered walls, laminate flooring, electric radiator, storage cupboard housing water tank, a further storage cupboard housing electric consumer unit, doors leading into all ground floor rooms.

Bathroom

Plastered ceiling, plastered walls, vinyl flooring, tiled splashback, three piece suite comprising low level WC, pedestal wash hand basin, panelled bath with mixer tap and over head electric shower, chrome heated towel rail.

Lounge/Kitchen

22' 6" x 10' 10" (6.86m x 3.29m)

UPVC double glazed French doors opening to front aspect, plastered ceiling with coving, plastered walls, laminate flooring, two electric radiators, a range of matching wall and base units with complimentary work surfaces, stainless steel sink with drainer and mixer tap, electric oven and four ring electric hob with extractor fan, plumbing for washing machine, space for fridge/freezer, Kitchen offers plenty of storage.



Bedroom One

13' 5" x 2' 9" (4.08m x 0.85m)

UPVC double glazed window to front aspect, plastered ceiling with coving, plastered walls, fitted carpet, built in fitted wardrobes, electric heater, door leading into en-suite.

En-Suite

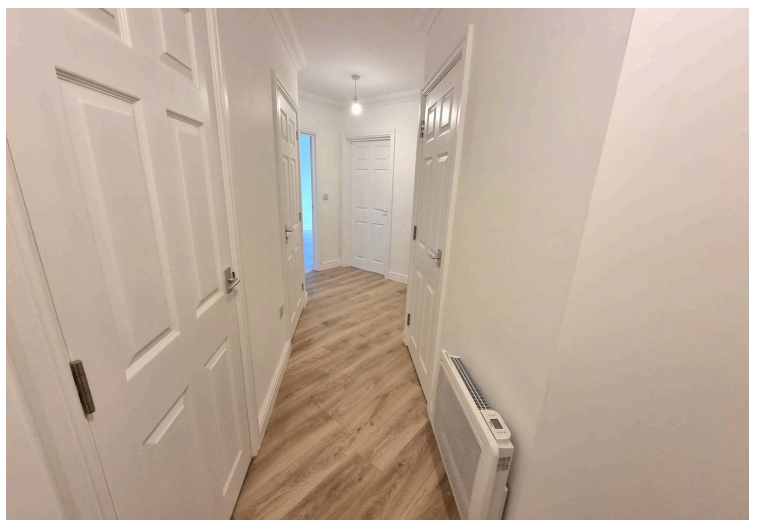
7' 5" x 4' 6" (2.26m x 1.37m)

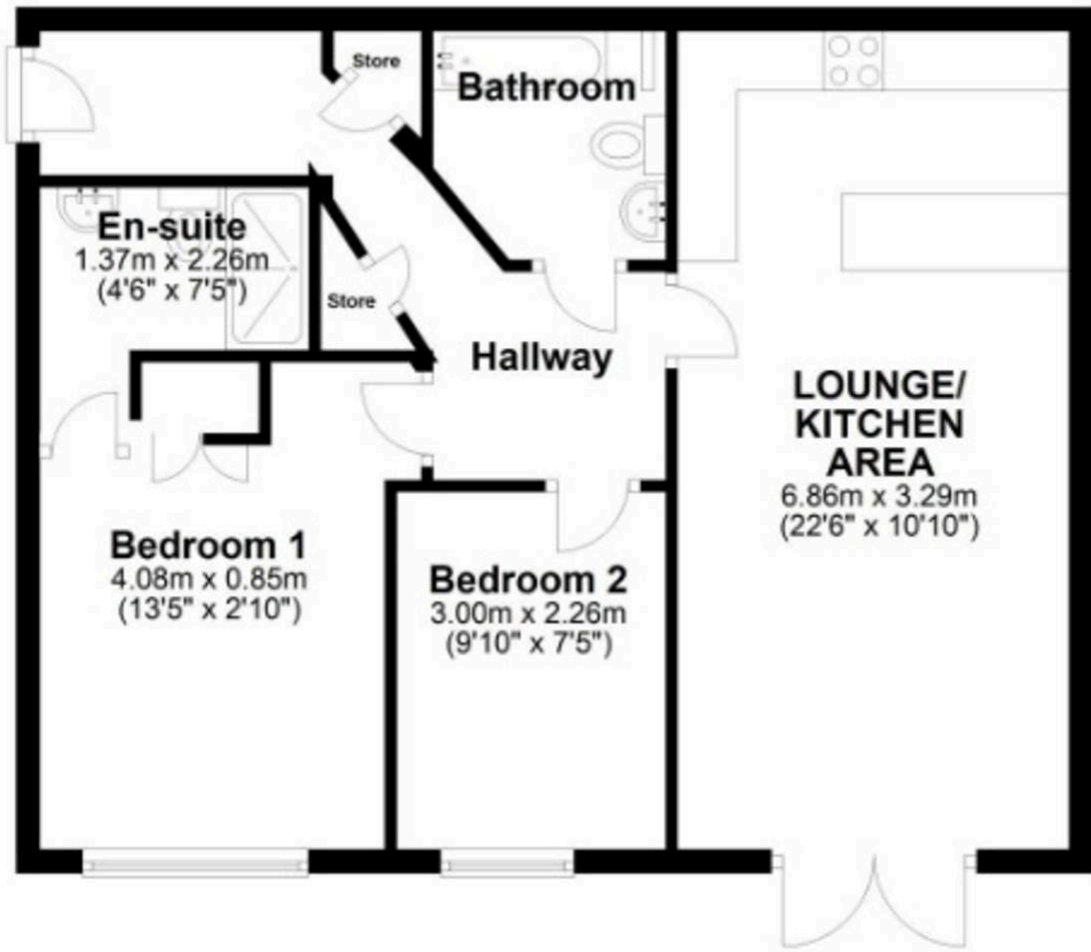


COMMUNAL GARDEN

Shared greenery surround apartments, which can be accessed by all residents.







You can include any text here. The text can be modified upon generating your brochure.

You can include any text here. The text can be modified upon generating your brochure.