

estate agents **auctioneers**

hollis
morgan



56, The General Guinea Street, Harbourside, Bristol, BS1 6SD

£435,000

Hollis Morgan - A character filled split level (800 sq ft) 2 bedroom apartment with parking.

- Split Level Apartment
- Two Double Bedrooms
- Two Bathrooms
- Open Plan Kitchen Living
- Parking Space
- Period Conversion

The Property

Originally established in 1832, Bristol General Hospital began in modest dwellings on Guinea Street, created through the vision of a group of local Quakers who sought to address the lack of healthcare for the growing industrial communities of Redcliffe and Bedminster. In its early days, the hospital served only local residents, reflecting its deep community roots. Now meticulously restored and reimagined, this historic landmark has been transformed into The General, a prestigious development of just 200 characterful apartments, thoughtfully designed within the original Grade II listed buildings. Residents benefit from a range of exceptional on-site amenities, including a 24-hour concierge service, members' gym, a private residents' garden, and restaurant. The development also enjoys a level walk to Bristol Temple Meads, offering excellent connectivity.

This stunning split-level mezzanine apartment, located on the second floor, showcases a sophisticated blend of modern luxury and period charm. The lower level features a beautifully appointed open-plan kitchen and living area, the bespoke kitchen is fitted with a stylish range of wall and base units, complemented by integrated appliances including an induction hob, oven, extractor fan, fridge/freezer, and dishwasher. Also on this level is a generous bedroom and sleek, fully tiled shower room, complete with a large mains-fed walk-in shower, inset mirror, basin, low-level WC, and a heated towel rail. Upstairs, the mezzanine level offers an impressive principal bedroom which overlooks the living area below and benefits from a luxurious en suite bathroom featuring a mains-fed shower over bath, basin, WC, and heated towel rail. Further highlights include a secure allocated parking space and access to the beautifully maintained residents' garden, providing a peaceful retreat in the heart of the city.

Location - City Centre

The Centre is the heart of the City with constant action on offer from the Hippodrome and Colston Hall, Bristol Shopping Quarter at Cabot's Circus to the characterful Christmas Steps, Corn Street and St Nicholas Market. Nearby Millennium Square acts as a gateway to the neighbouring harbourside with its fountains and big screen as well as world class attractions such as Brunel's SS Great Britain, We The Curious, Bristol Aquarium, the Arnolfini, Spike Island, the Watershed and the M Shed.

Other Information

Leasehold. Please refer to agent
Ground rent: £250 pa
Management Fee: £341.5 pcm
Council Tax Band: D

Please Note

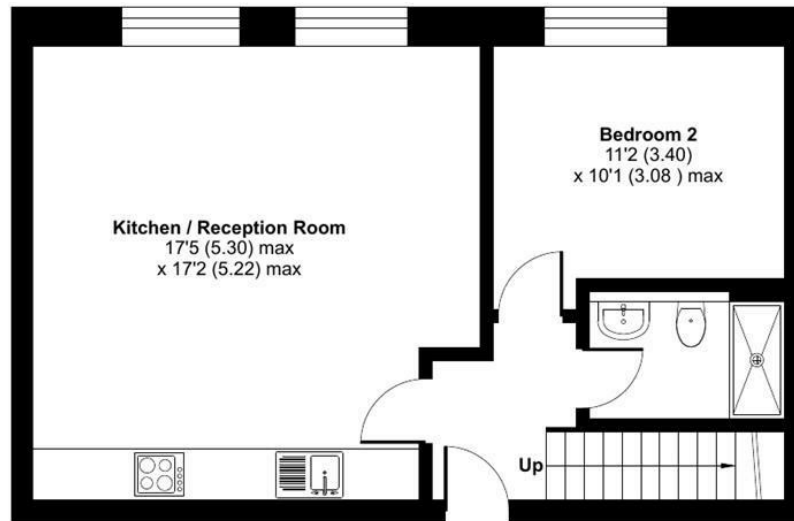
Hollis Morgan endeavour to make our sales details clear, accurate and reliable in line with the Consumer Protection from Unfair Trading Regulations 2008 but they should not be relied on as statements or representations of fact and they do not constitute any part of an offer or contract. All Hollis Morgan references to planning, tenants, boundaries, potential development, tenure etc is to be superseded by the information provided in your solicitors enquiries. It should not be assumed that this property has all the necessary Planning, Building Regulation or other consents. Any services, appliances and heating system(s) listed may not been checked or tested and you should rely on your own investigations. The seller does not make any representation or give any warranty in relation to the property and we have no authority to do so on behalf of the seller. Please note that in some instances the photographs may have been taken using a wide angle lens.



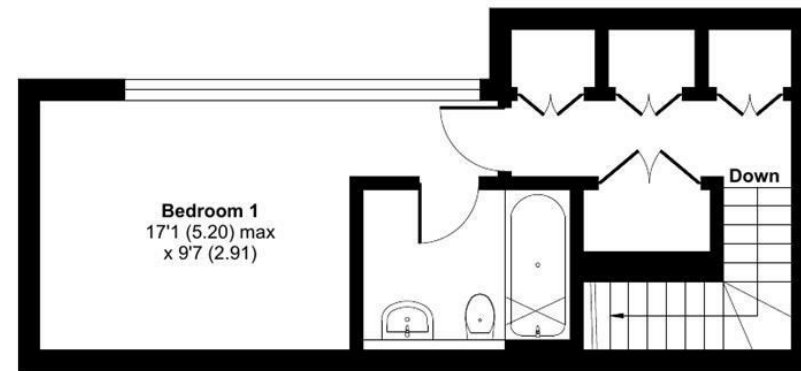
The General, Guinea Street, Bristol, BS1

Approximate Area = 804 sq ft / 74.6 sq m

For identification only - Not to scale



SECOND FLOOR



THIRD FLOOR



Floor plan produced in accordance with RICS Property Measurement 2nd Edition, Incorporating International Property Measurement Standards (IPMS2 Residential). © nitchecom 2025. Produced for Hollis Morgan. REF:1369231



TEL | 0117 933 9522 | 9 Waterloo Street, Clifton, Bristol BS8 4BT

www.hollismorgan.co.uk | post@hollismorgan.co.uk

Hollis Morgan Property Limited, registered in England, registered no 7275716
Registered address, 5 Upper Belgrave Road, Clifton, Bristol BS8 2XQ

hollis
morgan
