

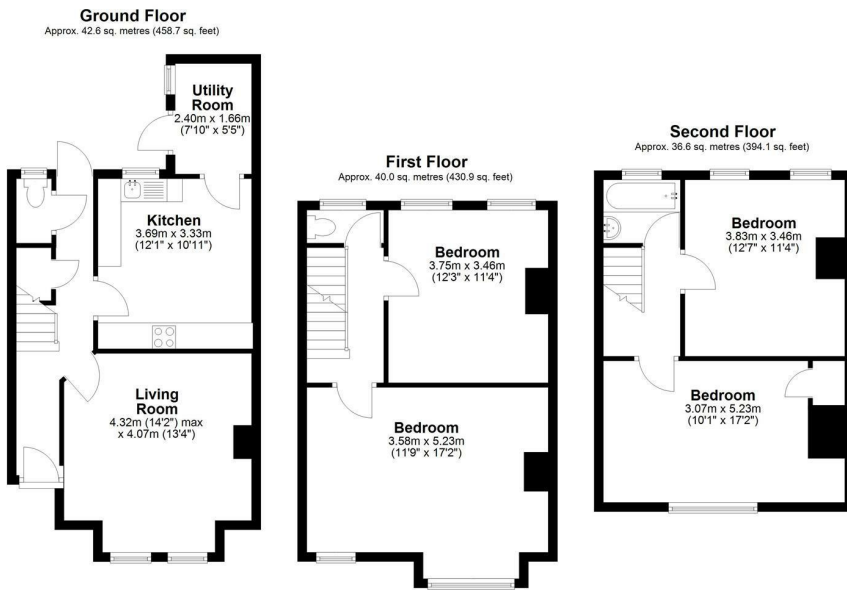


Moring Road, London, SW17 8DN

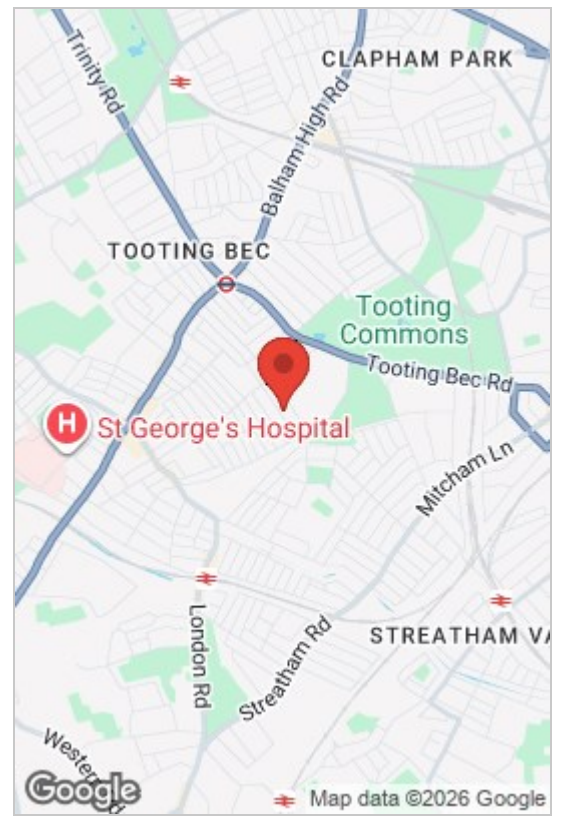
Asking Price £899,950

 4  1  1  E





Total area: approx. 119.3 sq. metres (1283.7 sq. feet)



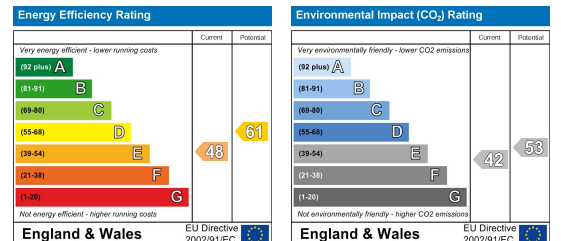
- 4 Double Bedrooms
- Utility Room
- Lounge
- Gas Central Heating
- Scope for improvement
- Large kitchen
- Ground Floor Cloakroom
- Sought after road
- Rear Garden
- Near Tooting Bec Common

We are please to offer this 4 double bedroom property to the market. Situated close to Tooting Bec Common with its open spaces and Tooting Bec Lido yet still conveniently located for transport and shopping. Tooting Bec Northern Line being the nearest tube station.

The accommodation is over 3 floors and ideal for a family with 4 good size bedrooms. The property has been improved over the years to include gas central heating and double glazed windows throughout but there is still scope for the property to be improved by a new owner. A number of other properties on the road having been extended to provide larger ground floor living space and larger bathrooms.

Early viewing is recommended.

Council Tax Band: E



These particulars, whilst believed to be accurate are set out as a general outline only for guidance and do not constitute any part of an offer or contract. Intending purchasers should not rely on them as statements of representation of fact, but must satisfy themselves by inspection or otherwise as to their accuracy. No person in this firms employment has the authority to make or give any representation or warranty in respect of the property.