



GASCOIGNE HALMAN

34 MIMOSA CLOSE, ELTON, CHESTER

THE AREAS LEADING ESTATE AGENT



34 MIMOSA CLOSE, ELTON, CHESTER

£235,000

A stylish, modern townhouse with spacious, versatile accommodation arranged over three floors, set in a sought after area of Elton.

Modern family life means we need more flexibility in our homes than ever. This property provides options for the rooms to be configured to suit a variety of needs with ample space for larger families and home working. It is arranged over three floors with the ground floor offering an entrance hallway with cloakroom/WC and a spacious open plan kitchen/dining room. The garage was converted many years ago and this creates a useful extra living room or potential bedroom.





DESCRIPTION

The lounge is on the first floor with doors opening with a Juliette balcony. There is a bedroom and a bathroom also on the first floor. The second floor features a spacious main bedroom with en-suite shower room and a second double bedroom. There are double glazed windows and a gas fired central heating system is installed. There is driveway parking to the front and an enclosed rear garden with patio area and lawn.

LOCATION

The property is situated in a popular residential cul-de-sac on the edge of Elton. The village offers a selection of local shops catering for many day to day needs and there is a village primary school and pub. Helsby and Frodsham are both within easy reach offering a wide range of services plus the well regarded Helsby High School. The road, rail and motorway networks allow access to many parts of the North West with Chester, Liverpool, Warrington and Manchester all within daily travelling distance.

TENURE

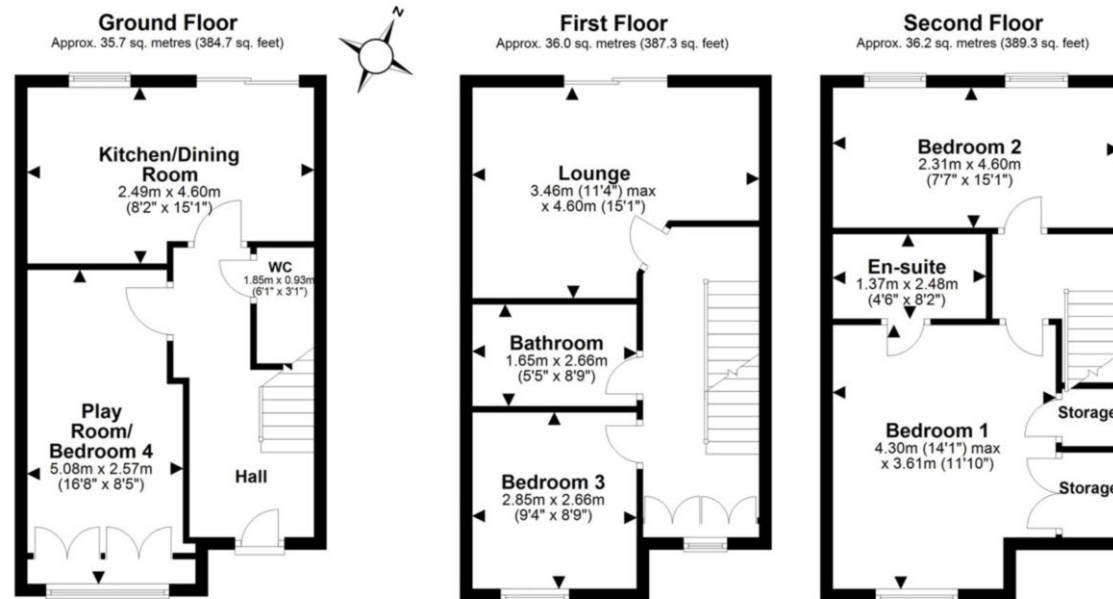
Freehold.

COUNCIL TAX

Band C. Cheshire West & Chester.

EPC REGISTER

Current C.



Total area: approx. 107.9 sq. metres (1161.2 sq. feet)

NOTICE Gascoigne Halman for themselves and for the vendors or lessors of this property whose agents they are give notice that: (i) the particulars are set out as a general outline only for the guidance of intending purchasers or lessees, and do not constitute, nor constitute part of, an offer or contract; (ii) all descriptions, dimensions, references to condition and necessary permissions for use and occupation, and other details are given in good faith and are believed to be correct but any intending purchasers or tenants should not rely on them as statements or representations of fact but must satisfy themselves by inspection or otherwise as to the correctness of each of them; (iii) no person in the employment of Gascoigne Halman has any authority to make or give any representation or warranty whatever in relation to this property.

FRODSHAM OFFICE

01928 739777

frodsham@gascoignehalman.co.uk

Pollard Buildings, Church Street, Frodsham, WA6 7DW

**GASCOIGNE
HALMAN**