

## Gratton Road, W14

### £600,000

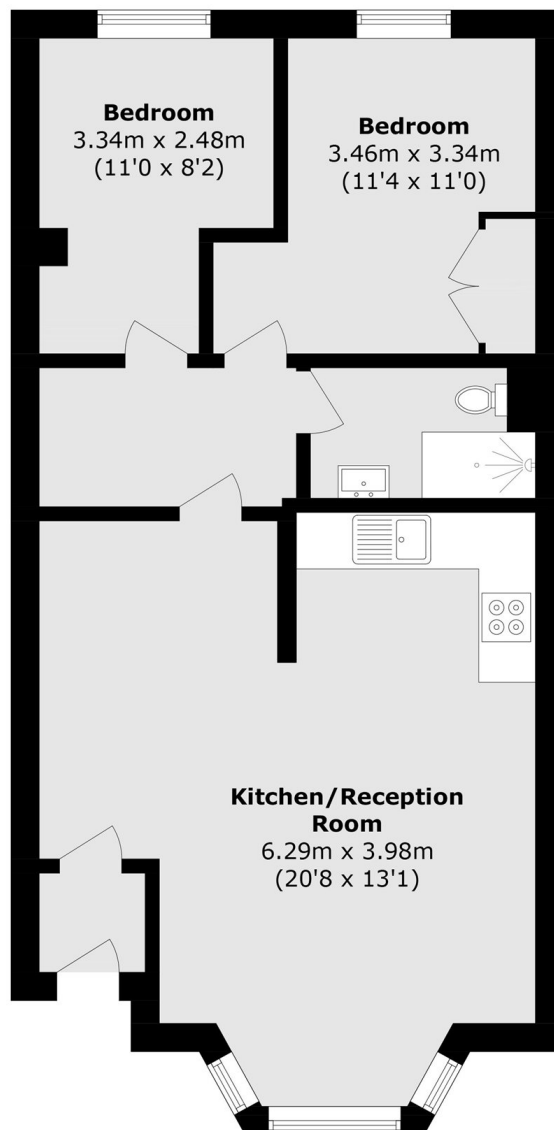
A charming, two bedroom, raised ground floor flat with its own front door, set in the heart of Brook Green. The property offers a good sized living space with high ceilings and recently renovated by the current owners.

Gratton Road is located in Brook Green within easy reach of Shepherds Bush station and the shops, bars and restaurants at Westfield. Holland Park is only a short walk away.

### Features

- Excellent Location
- Open Plan Living
- Share Of Freehold
- Two Bedrooms
- Brook Green
- Private Entrance

# Gratton Road, London, W14



## Ground Floor

Total area (approx.): 55.8 sq. m (600.6 sq. ft)