



Wolsey Mews, NW5

£1,153 Per week

Dexters



Wolsey Mews, NW5

A modern three bedroom mews house with a reception and private patio. This property offers an open plan living-kitchen-dining area opening up to a private patio occupying the whole first floor. The property boasts a master bedroom with an en suite and walk in closet as well as a small outside space.

The property comes with a small reception room perfect for an office space and a secret room hidden behind a bookshelf currently in use as a utility room. The property has an abundant amount of built in storage in the bedrooms and throughout the property.

Only a minutes walk from Kentish Town Tube station (Northern line) as well as in close proximity to Kentish Town West Overground (Thameslink).

Features

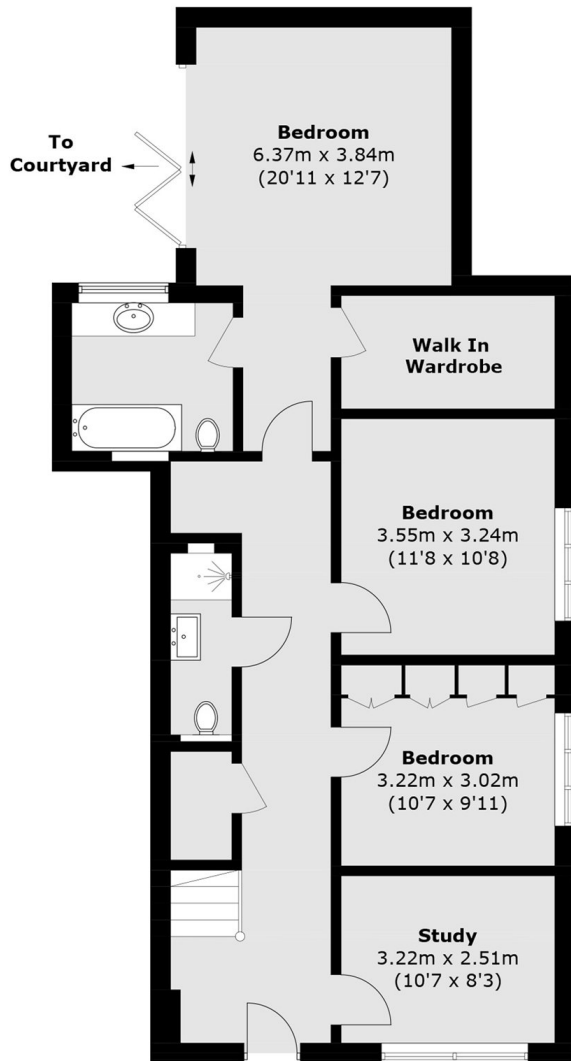
- Three Bedroom
- Private Patio
- Hardwood Flooring
- Walk in wardrobe
- Local Amenities
- Great Transport Links



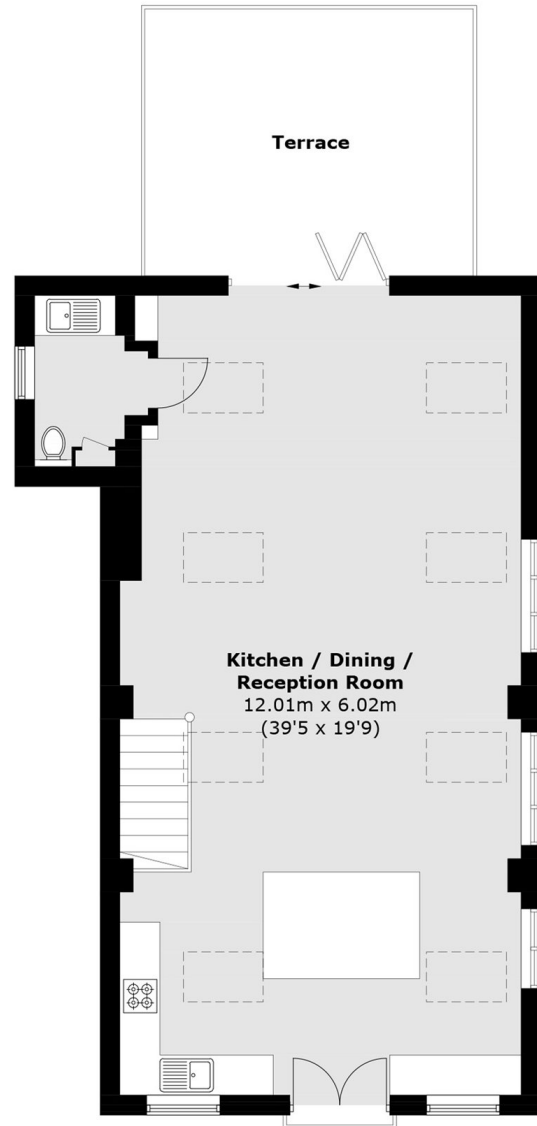




Wolsey Mews, London, NW5



Ground Floor



First Floor

Total area (approx.): 160.4 sq. m (1,726.5 sq. ft)
Terrace: 19.8 sq. m (213.1 sq. ft)