



Evelyn Way, Epsom

Epsom

Guide Price £575,000

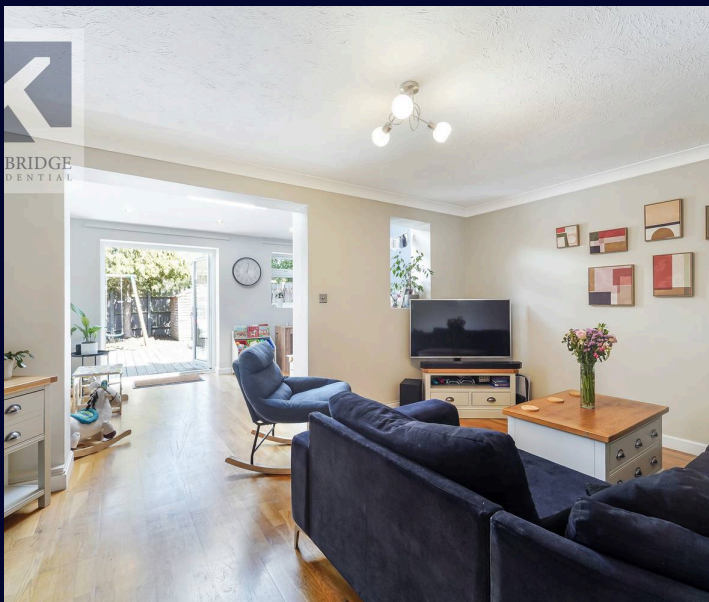


Evelyn Way

Epsom

- Three bedroom end-of-terrace family home
- Sought-after Manor Park Development
- Downstairs W.C
- Extended
- Immaculately presented throughout
- Two allocated parking spaces
- Landscaped garden
- Close proximity to well-regarded schools and amenities
- Short walk to Epsom Common and a 3 minute walk to Horton Country Park

This beautifully extended three bedroom end-of-terrace family home is situated within the highly sought-after Manor Park Development. Immaculately presented throughout, the property offers generous and versatile living space, ideal for modern family life. The ground floor features a welcoming entrance hall leading to a spacious lounge and a contemporary kitchen, which benefits from ample natural light. Upstairs, there are three bedrooms and a stylish family bathroom, all finished to a high standard. With two allocated parking spaces, this property provides excellent accessibility for residents and guests. Located within close proximity to well-regarded schools and a range of local amenities, this home is perfectly positioned for families. Additionally, it is just a short walk to the scenic Epsom Common and Horton Country Park, offering easy access to outdoor leisure and recreation.



The outside space of this property has been thoughtfully designed to create an inviting and low-maintenance environment. The landscaped rear garden features a combination of decking and lawn areas, providing the perfect setting for al fresco dining, entertaining, or simply relaxing in the sunshine. The property also benefits from two allocated parking spaces. The front of the home enjoys a pleasant outlook with well-kept communal green spaces and tree-lined pathways, enhancing the overall appeal of the development. With its blend of stylish interiors and beautifully maintained outside areas, this property offers a wonderful opportunity to enjoy a comfortable and contemporary lifestyle in a desirable location.

Council Tax band: D

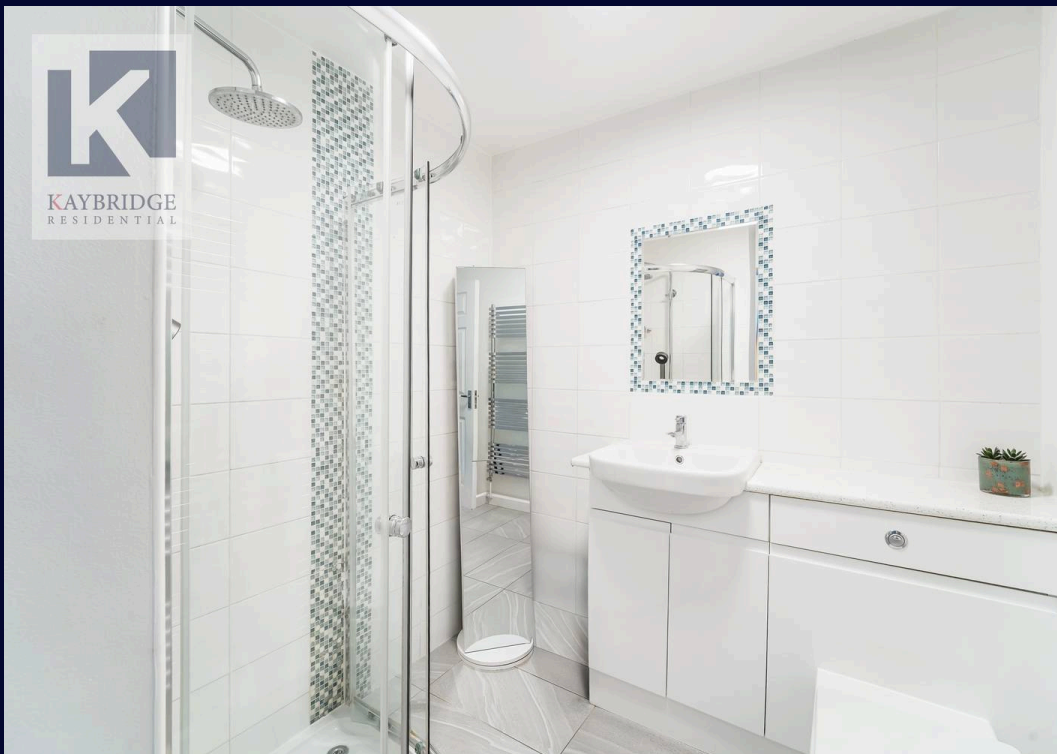
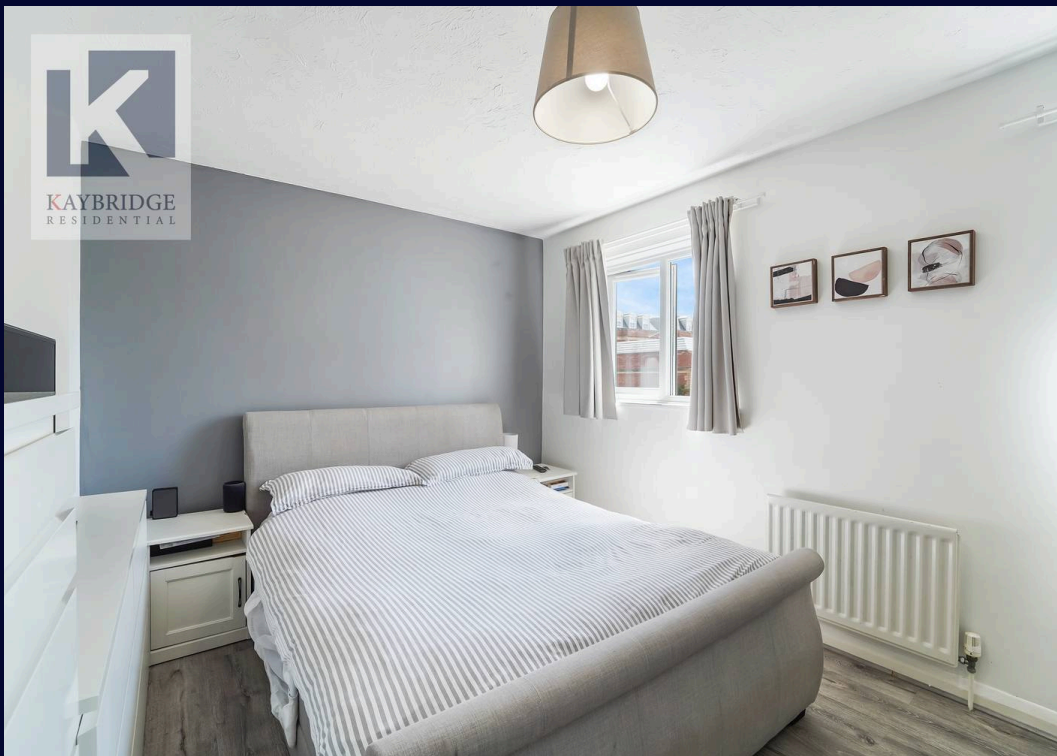
Tenure: Freehold

EPC Energy Efficiency Rating: E

EPC Environmental Impact Rating: E

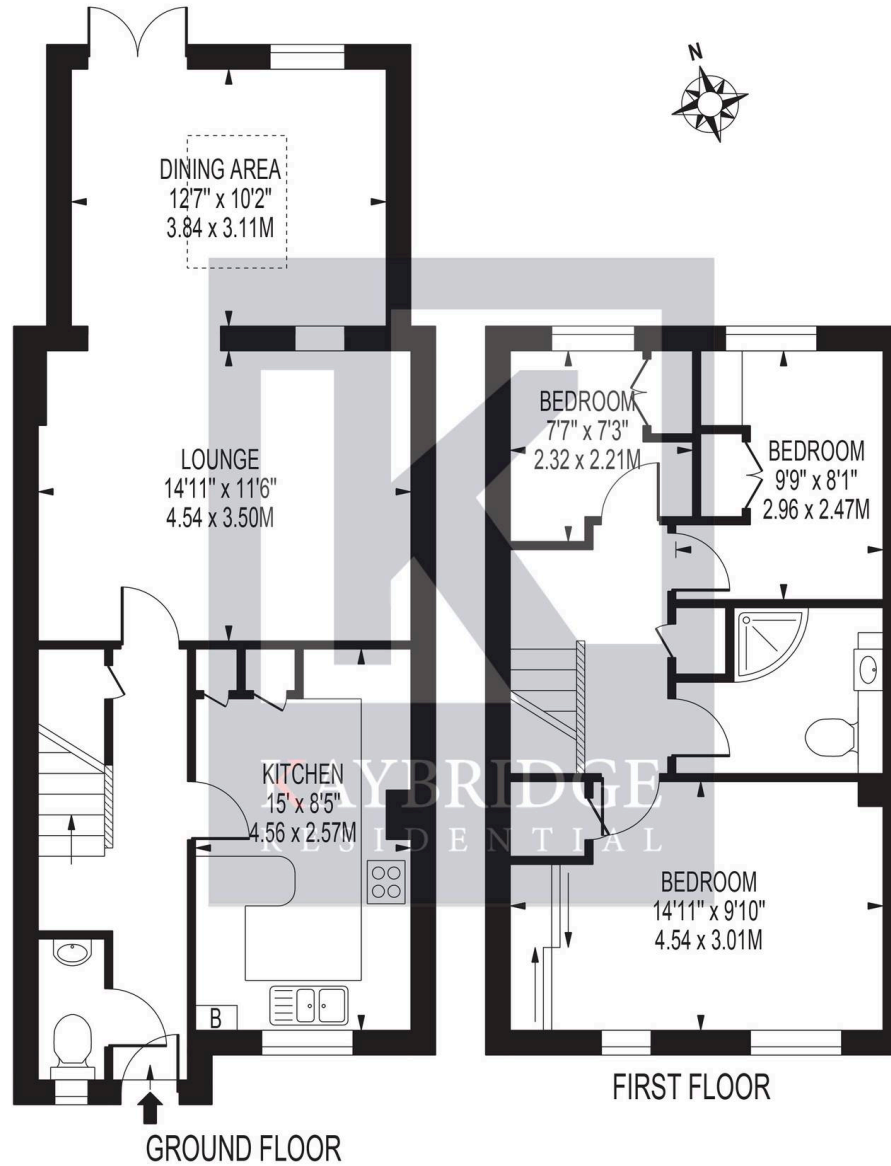
Evelyn Way is a highly sought-after Manor Park Development in Epsom, well suited for families and commuters alike. The property is within easy reach of local shops, parks, and well-regarded schools, while Epsom town centre offers a wide range of restaurants, cafés, and leisure facilities. For commuters, nearby transport links provide convenient access into London and surrounding areas, making this an excellent location for both convenience and lifestyle.





EVELYN WAY EPSOM

APPROXIMATE GROSS INTERNAL FLOOR AREA: 949 SQ FT - 88.16 SQ M



FOR ILLUSTRATION PURPOSES ONLY

THIS FLOOR PLAN SHOULD BE USED AS A GENERAL OUTLINE FOR GUIDANCE ONLY AND DOES NOT CONSTITUTE IN WHOLE OR IN PART AN OFFER OR CONTRACT.
ANY INTENDING PURCHASER OR LESSEE SHOULD SATISFY THEMSELVES BY INSPECTION, SEARCHES, ENQUIRIES AND FULL SURVEY AS TO THE CORRECTNESS OF EACH STATEMENT.
ANY AREAS, MEASUREMENTS OR DISTANCES QUOTED ARE APPROXIMATE AND SHOULD NOT BE USED TO VALUE A PROPERTY OR BE THE BASIS OF ANY SALE OR LET.



KAYBRIDGE
RESIDENTIAL



Kaybridge Residential Estate Agents

Kaybridge Residential Estate Agents, 23 Stoneleigh Broadway - KT17 2JE

02080040474 • info@kbridge.co.uk • www.kaybridgeresidential.co.uk/

The information contained in this brochure is provided for marketing purposes only. We have not been independent in the details provided, Kaybridge cannot guarantee that the information is correct, complete, or up-to-date. The content is for general information only and may not represent its price or value.



KAYBRIDGE
RESIDENTIAL