

Jonathan Hunt

ESTATE AGENCY

20 High Street Ware SG12 9BX

Tel: 01920 411090

8 High Street Buntingford SG9 9AG

Tel: 01763 272727

info@jonathan-hunt.co.uk

www.jonathanhunt.co.uk



Jonathan
Hunt
Estate Agency

47 Hummerston Close, Buntingford, SG9 9SX

Asking Price £635,000

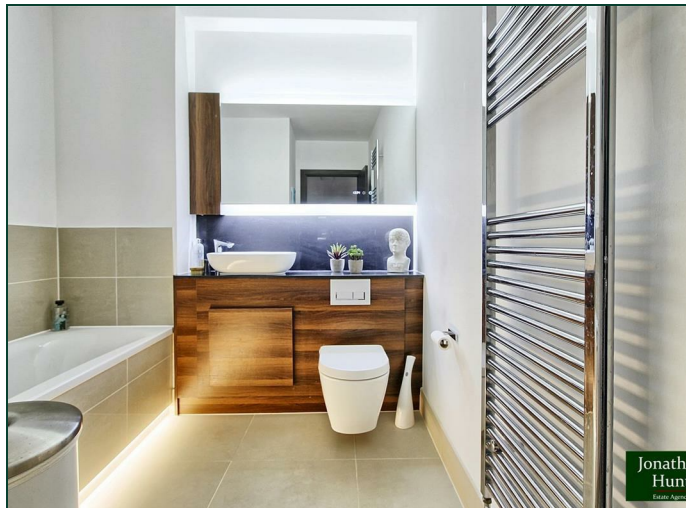
47 Hummerston Close, Buntingford, SG9 9SX

This elegant detached family home sits on a prime corner plot within a peaceful, well-kept development, enjoying open views across a landscaped green. The house has a timeless feel and a quality finish throughout.

Inside, there are four generous double bedrooms, including a superb principal suite with its own en-suite and a walk-in wardrobe. The family bathroom is finished to a high standard, and the kitchen/dining room forms the heart of the home, fitted with modern integrated appliances and offering plenty of space for everyday living.

The dual-aspect lounge overlooks both the garden and the green, with French doors opening onto a sunny, beautifully maintained rear garden planted for year-round colour and interest.

Just a short walk from Buntingford High Street, this is a modern, well-located home that blends comfort, space and convenience for family life.



ENTRANCE HALL

CLOAKROOM

LOUNGE 18'1" x 11'6" (5.52m x 3.51m)

LOUNGE image 2

KITCHEN/DINER 18'3" x 10'7" (5.57m x 3.25m)

KITCHEN/DINER image 2

KITCHEN/DINER image 3

FIRST FLOOR

MASTER BEDROOM 17'10" x 11'5" (5.46m x 3.50m)

EN-SUITE 7'2" x 6'2" (2.2 x 1.89)

WALK-IN WARDROBE 6'1" x 5'8" (1.87 x 1.75)

BEDROOM TWO 12'10" x 11'6" (3.93 x 3.51m)

BEDROOM THREE 11'1" x 10'6" (3.39m x 3.21m)

BEDROOM FOUR 13'0" x 9'11" (3.97 x 3.03)

BATHROOM 9'4" x 7'1" (2.87 x 2.16)

PREMIUM FINISHES

DESIGNER OAKWOOD KITCHEN

Stainless steel oven, induction hob, integrated fridge/freezer, washer/dryer and dishwasher.

Quartz stone worktops.

Fascino hand-finished, stainless steel sink with curved tap and instant boiling water tap.

LUXURY BATHROOM & EN-SUITE

Smart mirror with LED lighting and de-mist.

Walnut vanity unit with black porcelain worktop.

RAK ceramic basin, hygiene + WC with rimless pan and soft close seat.

Fascino smart shower and bath.

Heated chrome towel rails.

RAK ceramic wall and floor tiles.

Low-level LED strip lighting.

GENERAL SPECIFICATION

Forest oak style doors with polished chrome ironmongery.

White oak wooden flooring to ground floor.

Fitted carpets to first floor.

Walk-in wardrobe to master bedroom.

USB double power sockets

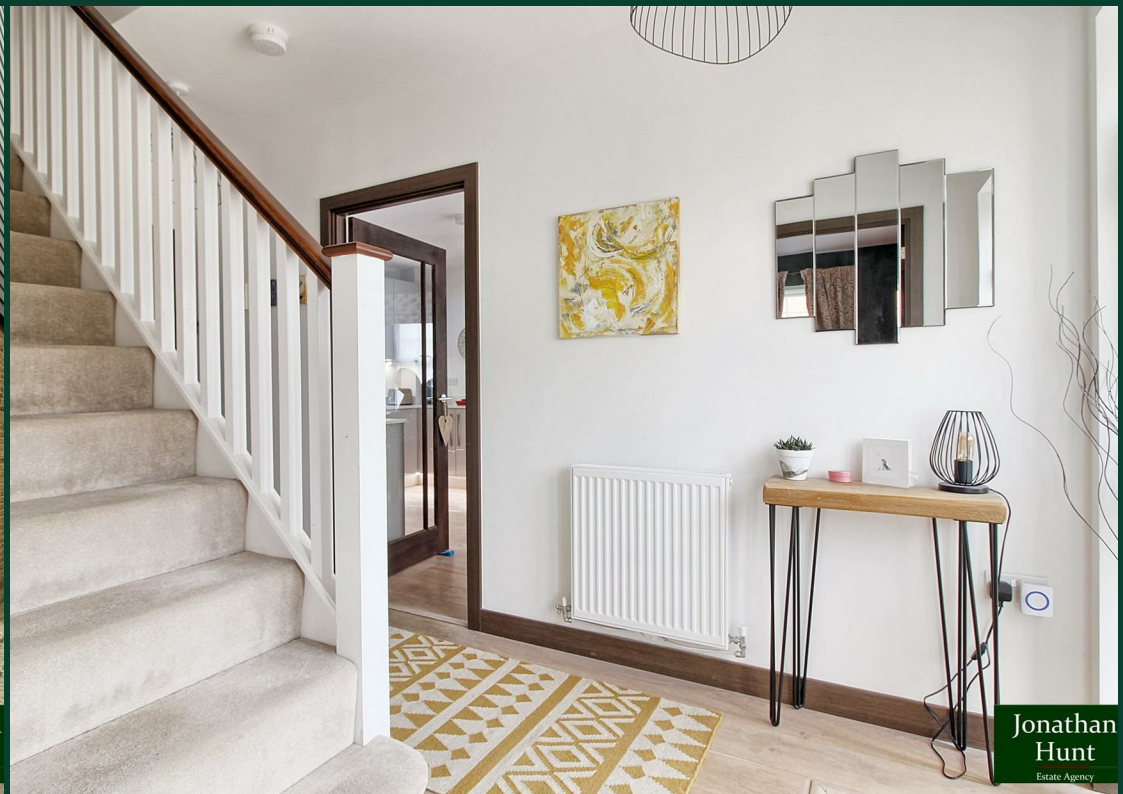
GARDEN

CAR PORT

Off-street under cover parking for 2 cars



Jonathan
Hunt
Estate Agency



Jonathan
Hunt
Estate Agency



Jonathan
Hunt
Estate Agency



Jonathan
Hunt
Estate Agency



Approx Gross Internal Area
126 sq m / 1355 sq ft



Ground Floor
Approx 50 sq m / 534 sq ft

First Floor
Approx 76 sq m / 821 sq ft

This floorplan is only for illustrative purposes and is not to scale. Measurements of rooms, doors, windows, and any items are approximate and no responsibility is taken for any error, omission or mis-statement. Icons of items such as bathroom suites are representations only and may not look like the real items. Made with Made Snappy 360.

