



## The Residence, Paddington Green, W2

£3,900 pcm

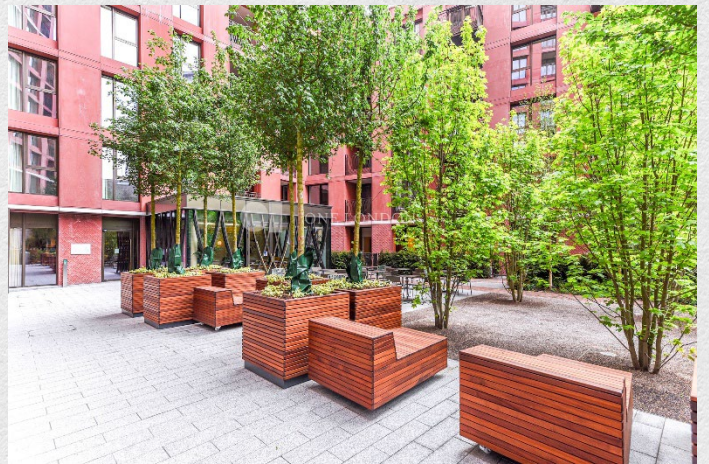
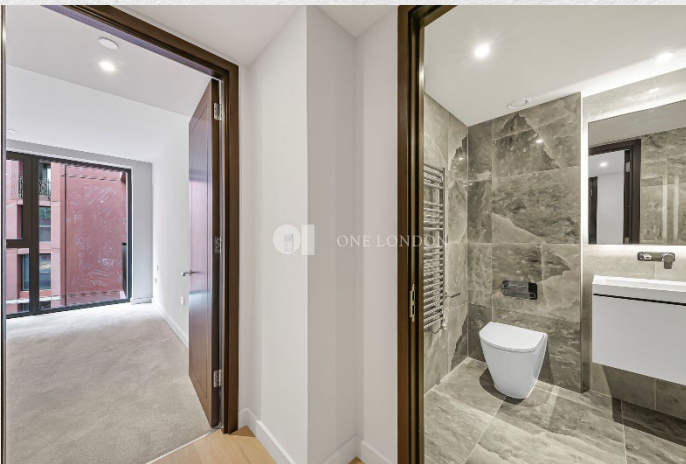
*Situated on the 4th floor and extending to approximately 610 sq. ft., this thoughtfully designed apartment offers generous proportions and an excellent sense of space.*

*The open-plan living area is enhanced by floor-to-ceiling windows, allowing for abundant natural light and a bright, contemporary feel. The layout provides a well-sized double bedroom, separate from the main living area, alongside a sleek, modern bathroom. The apartment is finished to an excellent standard, featuring high-quality materials and refined, contemporary design throughout.*

*This prime Central London property represents the pinnacle of modern urban living. The carefully curated interiors balance functionality with sophisticated aesthetics, ensuring every square foot is fully optimized. Residents will benefit from a vibrant local neighborhood, seamless transport links, and proximity to world-class dining, shopping, and cultural landmarks.*

- Fourth floor apartment
- 610 sq ft living space
- 1 bedroom
- 1 bathroom
- Bright open-plan living and dining area
- Premium resident amenities
- 24-hour concierge and security
- Great transport links
- Prime Central London location

*This remarkable residence delivers an unparalleled lifestyle in a truly iconic location.*





ONE LONDON

PROPERTY

*The Residences on  
Paddington Green, W2*

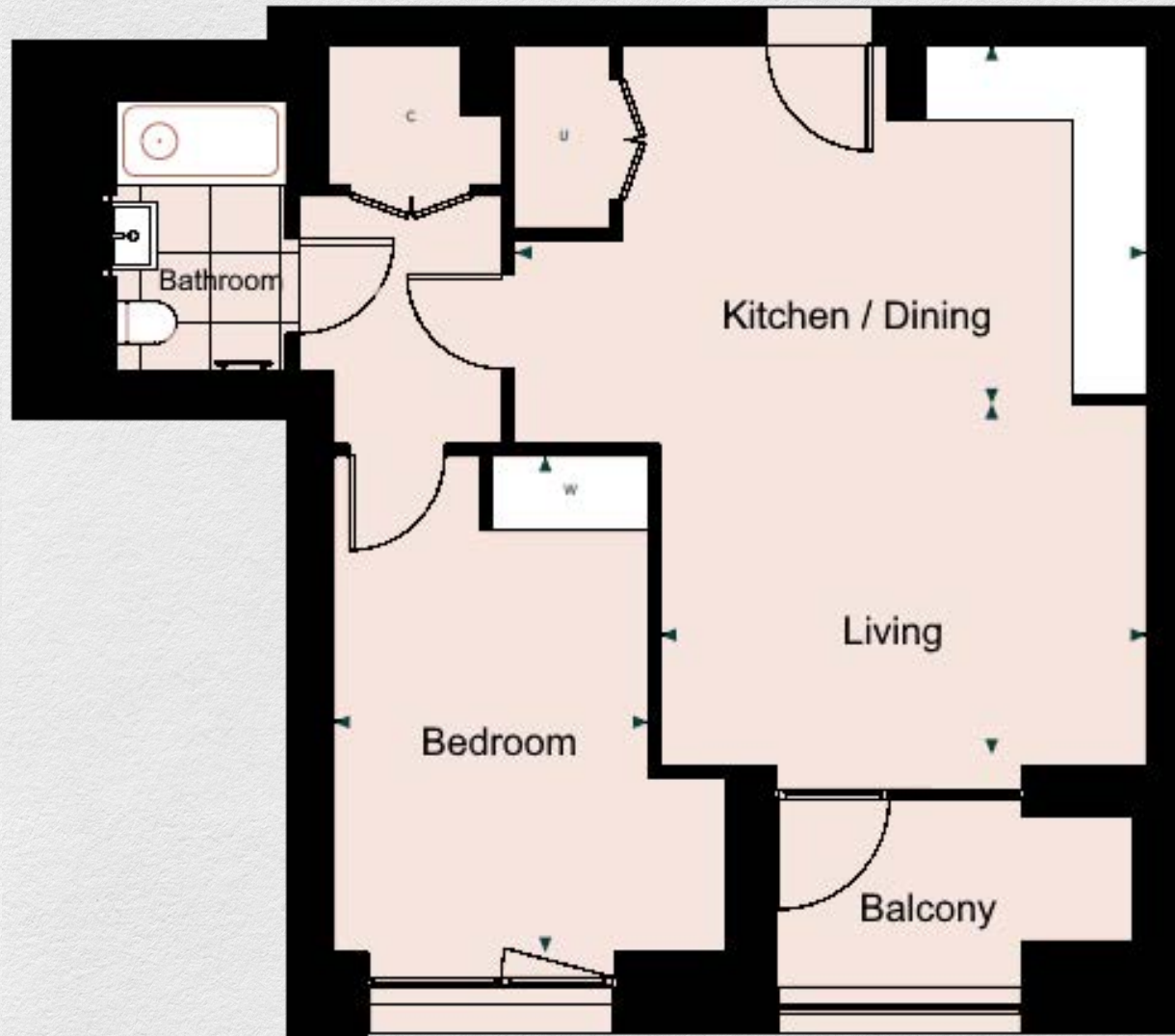
SIZE

*610 sq ft*

*One bedroom | One bathroom*

CONTACT

0207 856 0396  
info@one-london.uk  
www.one-london.uk



*\*\* For illustration purposes only. Could not be to scale.  
One-London aims to ensure accuracy but is not liable  
for any discrepancies.*

TR54R