



13 Rainbow Way, Abingdon OX14 2PF



13 Rainbow Way

Requiring complete modernisation a spacious four-bedroom detached house well situated in this popular North Abingdon location well situated close to many nearby amenities, sold with no ongoing chain.

13 Rainbow Way is situated in a popular North Abingdon development and offers easy pedestrian access to many nearby amenities including the reputable Rush Common primary school and Fitzharrys secondary school. There is a quick route onto the A34 leading to many important destinations north and south including Oxford city (circa. 6 miles) and Didcot (circa. 8 miles) with its mainline railway station to London Paddington in approximately 45 minutes.

Bedrooms: 4

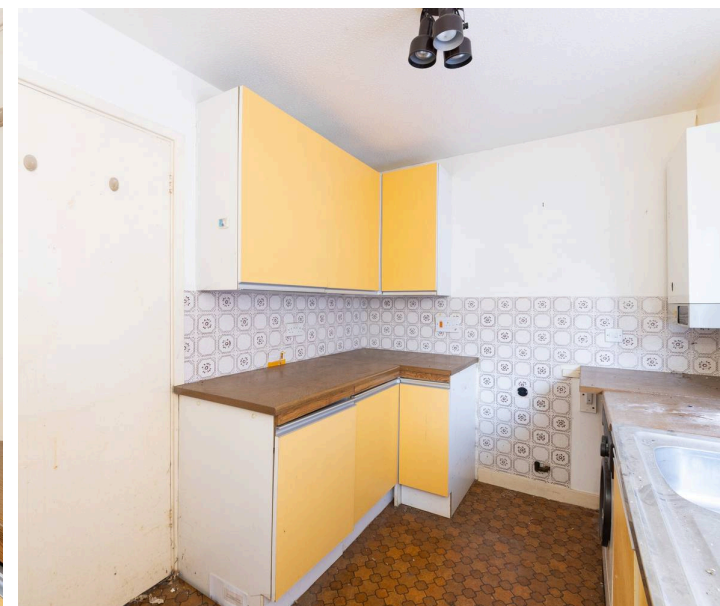
Bathrooms: 1

Reception Rooms: 2

Council Tax band: E

Tenure: Freehold

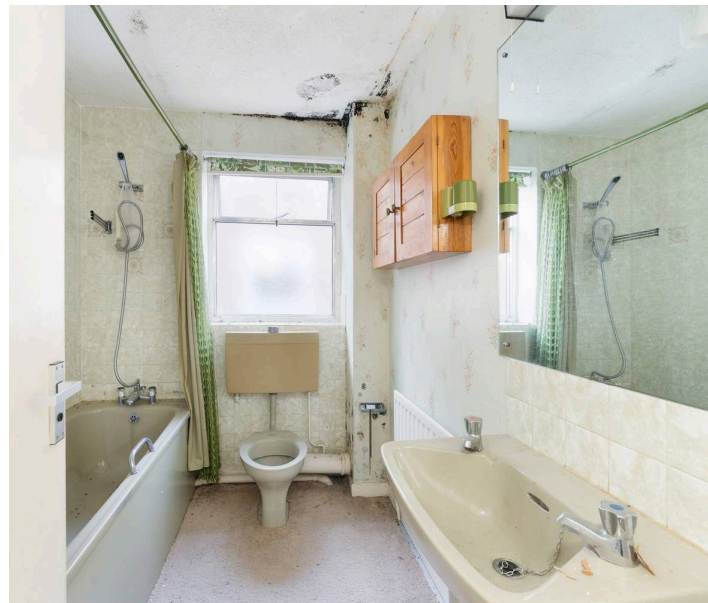
EPC: E





Key Features

- Entrance hall leading to WC/cloakroom
- Separate dining room and kitchen
- Good sized separate living room leading onto the rear gardens
- Four bedrooms (including two double bedrooms) and bathroom
- Front gardens providing hard standing parking facility leading to garage
- Rear garden





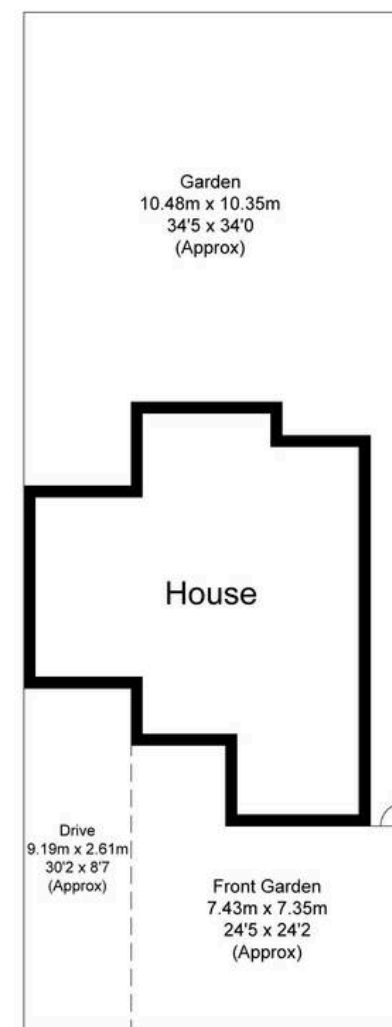
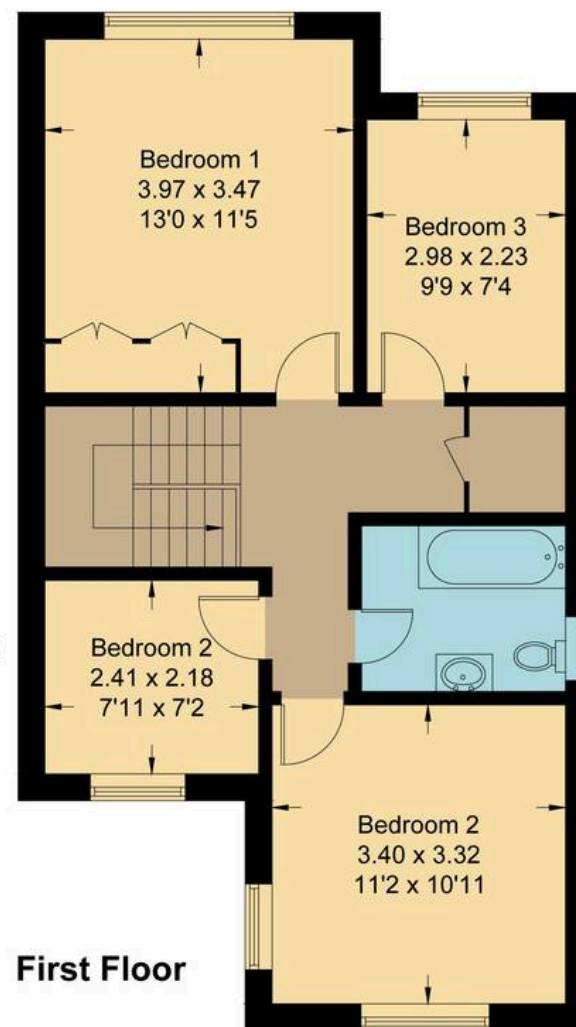
Rainbow Way, OX14

Approximate Gross Internal Area = 108.20 sq m / 1165 sq ft

Garage = 13.20 sq m / 142 sq ft

Total = 121.40 sq m / 1307 sq ft

For identification only - Not to scale



Not to scale, for illustration and layout purposes only.
© Mortimer Photography. Produced for Hodsons.
Unauthorised reproduction prohibited



Hodsons
your move, our passion
Sales | Lettings

5 Ock Street, Abingdon,
Oxfordshire, OX14 5AL

T: 01235 553686

E: abingdon@hodsons.co.uk

www.hodsons.co.uk