



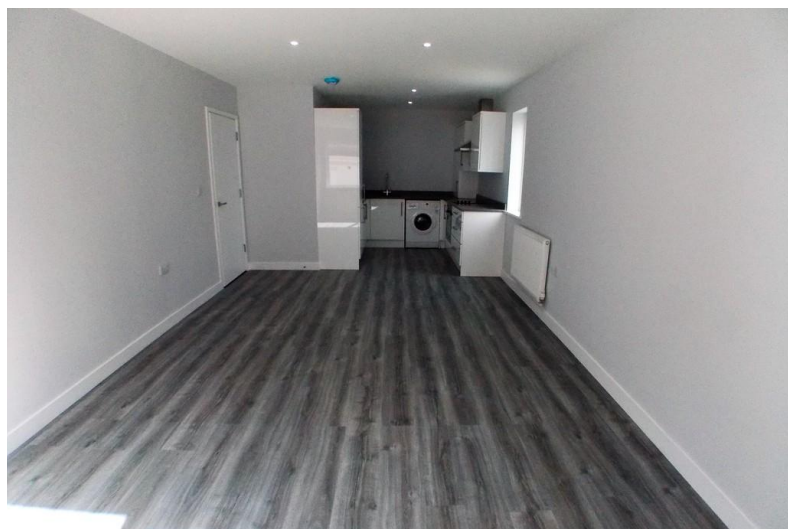
**HAIR & SON**  
THE ESTATE OFFICE

**The Broadway**  
, Wickford, SS11 7AD

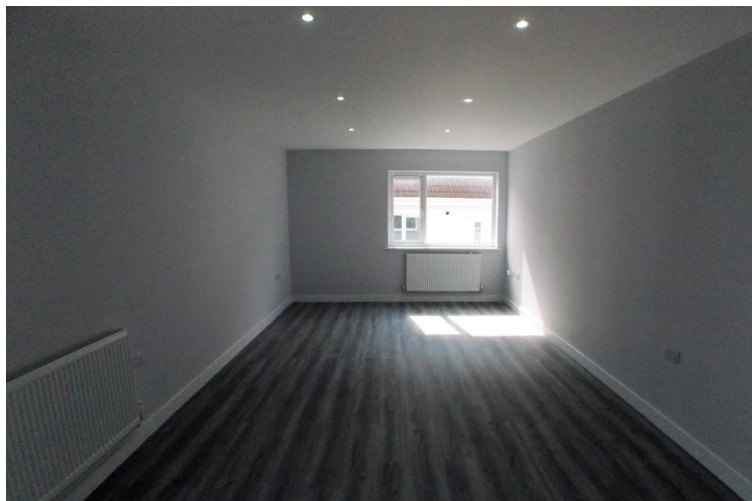
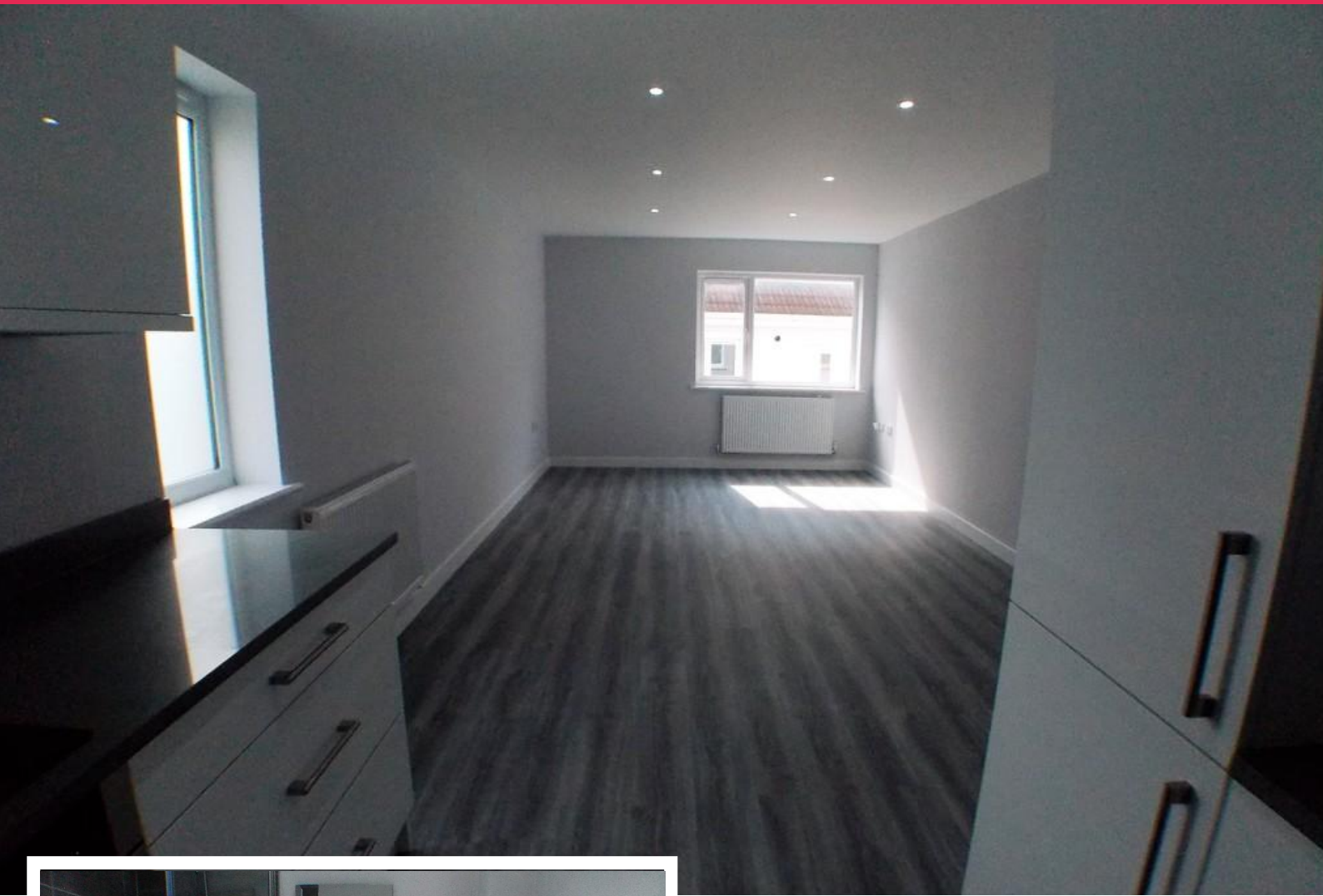
- New purpose built flat
- Gas central Heating
- Double glazed throughout
- Built in oven and Hob

## £850 pcm

A completely new two bedroom purpose built first floor flat. Entry phone, double glazed throughout, gas central heating, built in oven and hob, washing machine, fridge freezer, new carpets, close to main line station and shops. Designated parking space for one car. Also a bicycle shed is being built close by for the sole purpose of the flats. Professional working full time people only, no smokers, no pets.







#### **KITCHEN/DINER**

27' 11" x 11' 5" (8.52m x 3.50m) Kitchen/ Diner, with white led ceiling and light grey walls, white wall and floor cupboards with slow dosing doors. Light grey worktop surface, oven and hob, bosch washing machine, fridge freezer, 2 radiators, double glazed windows, grey vinyl flooring.

#### **BEDROOM 1**

12' 3" x 7' 0" (3.75m x 2.14m) White ceiling and light grey walls, walk in cupboard area, radiator, double glazed windows, light grey carpets

#### **BEDROOM 2**

16' 3" x 10' 2" (4.97m x 3.11m) White ceiling and light grey walls, walk in cupboard area, radiator, double glazed windows, light grey carpets

#### **BATHROOM**

6' 9" x 5' 6" (2.07m x 1.68m) White ceiling with LED lighting, partly tiled wall, white bathroom suite consisting of wash hand basin with drawers underneath.

Low flush WC, P shaped bath with over head shower, glass shower screen. Heated wall towel rail.

These particulars are accurate to the best of our knowledge but do not constitute an offer or contract. Photos are for representation only and do not imply the inclusion of fixtures and fittings. The floor plans are not to scale and only provide an indication of the layout.



%epcGraph\_c\_1\_347%

Regulated by RICS

t. 01702 34 11 77  
**More than an estate agent**  
**www.hairandson.co.uk**

**Residential Lettings**  
190 London Road  
Southend-On-Sea  
Essex  
SS1 1PJ

