



PER MONTH
£1,250 Per Month
Woodward Drive
Warwick, CV34 7BZ

PROPERTY SUMMARY

Two-Bedroom Home with Parking - Available Now

Located on a popular residential estate in Warwick, this well-presented two-bedroom house is ideal for professionals, couples, or small families. The property offers a bright living area, modern kitchen, two good-sized bedrooms, and an enclosed rear garden. Further benefits include two off-road parking spaces.

Conveniently situated close to local shops, supermarkets, schools, and leisure facilities, with excellent transport links including easy access to the M40 and nearby train services.

Early viewing is highly recommended.

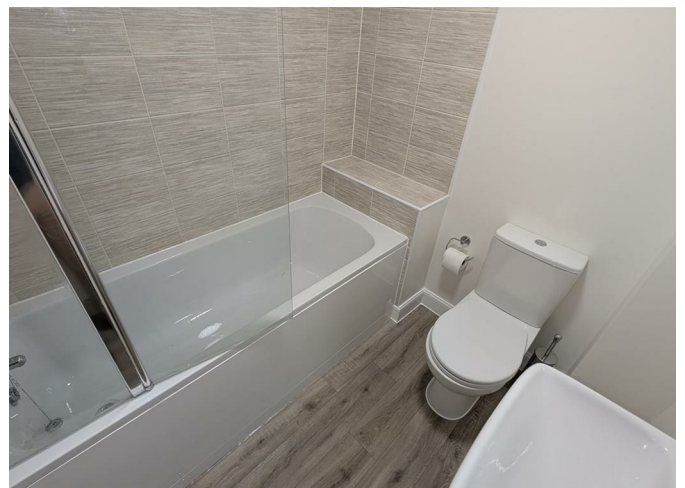
2



2



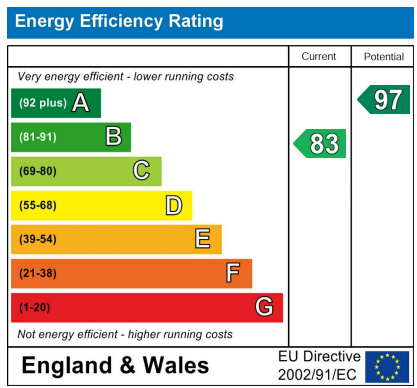
1







2	
2	
1	



Agents Note: Whilst every care has been taken to prepare these particulars, they are for guidance purposes only. All measurements are approximate and are for general guidance purposes only and whilst every care has been taken to ensure their accuracy, they should not be relied upon and potential buyers/tenants are advised to recheck the measurements

	<p>OFFICE ADDRESS 8a Regent Street Leamington Spa Warwickshire CV32 5HO</p>	<p>OFFICE DETAILS 01926 354 400 leamington@handlesproperty.co.uk</p>
--	--	---