



**Plot 2 Green Gables, Ashley Road, Epsom**

Epsom

Guide Price **£725,000**



## Plot 2 Green Gables, Ashley Road

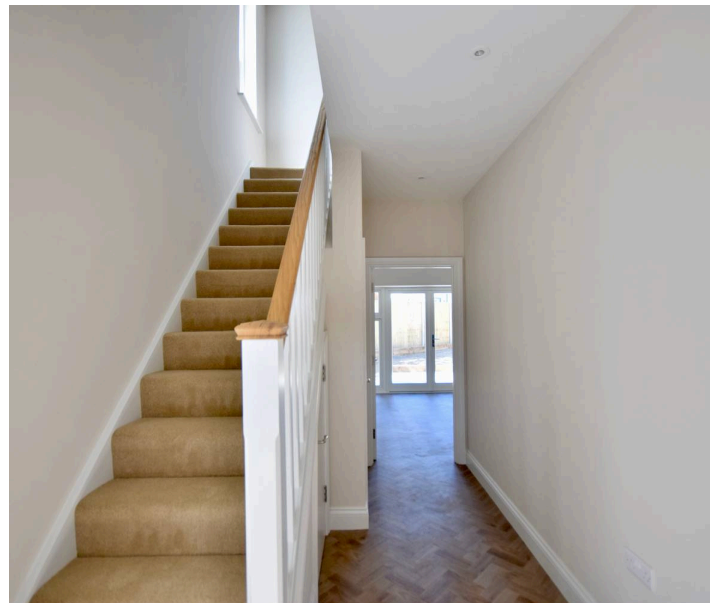
Epsom

Brand-new 2-bed semi in exclusive Green Gables development. Luxury finishes, bright living, private garden, parking, 10 year Buildmark warranty. Minutes from Epsom centre, station and park.

Council Tax band: TBD

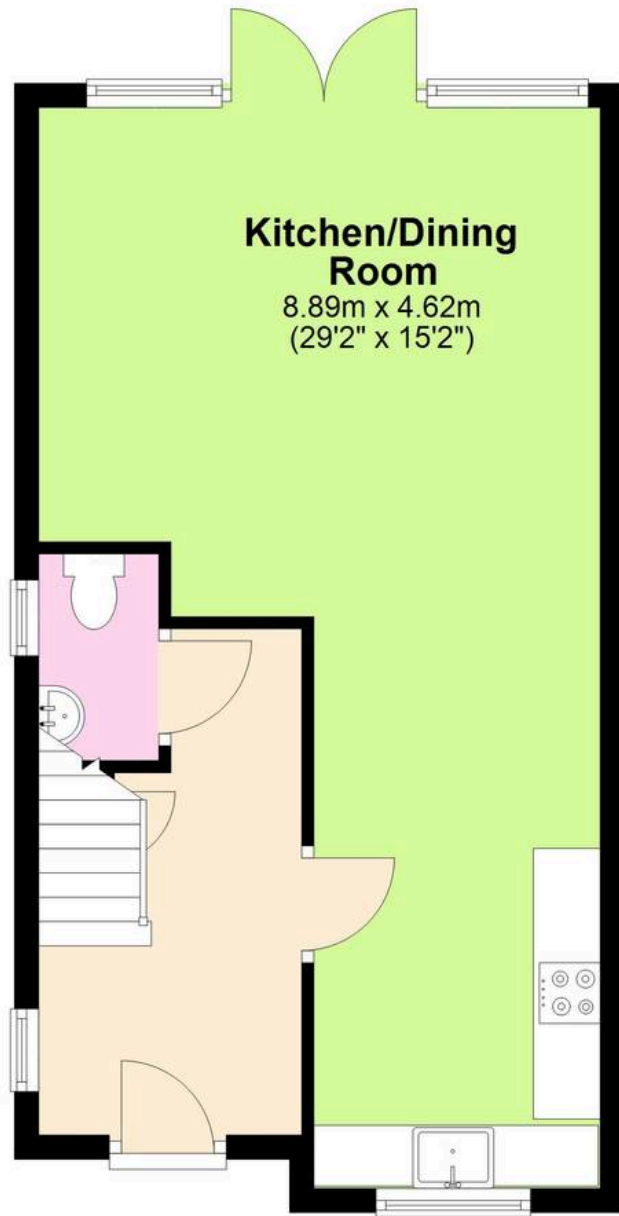
Tenure: Freehold

- Brand new bespoke semi-detached house
- Exclusive private close development
- Built by acclaimed developers Nuro Homes of Epsom
- Victorian inspired architecture
- Two bedrooms & two luxury bathrooms
- Landscaped private garden
- Allocated off-street parking
- Underfloor heating (ground floor)
- 10-year Buildmark warranty



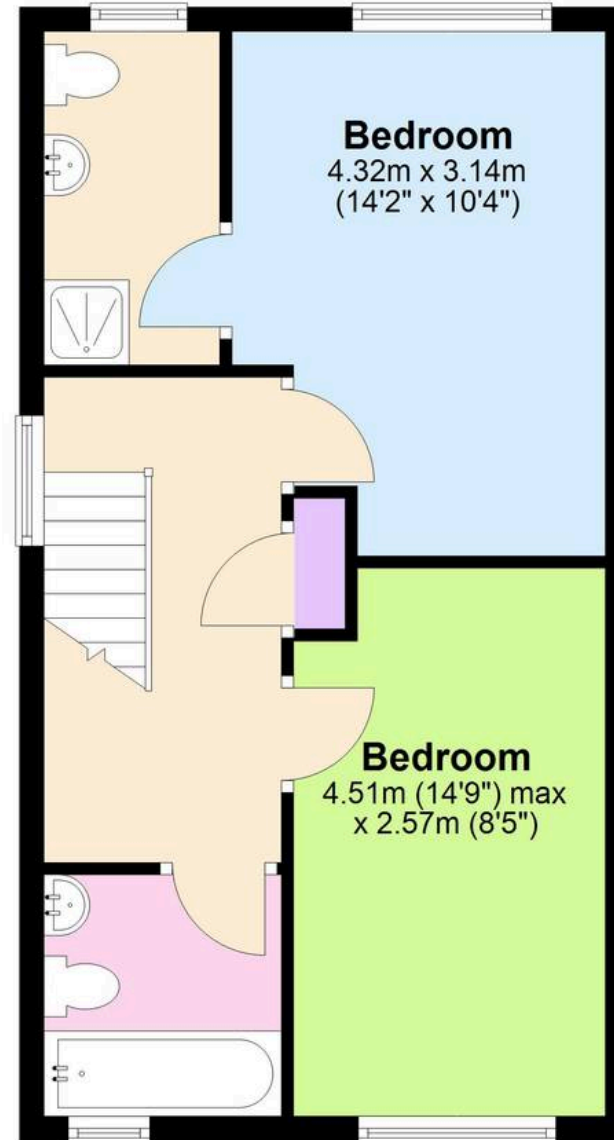
## Ground Floor

Approx. 41.1 sq. metres (441.9 sq. feet)



## First Floor

Approx. 41.2 sq. metres (443.7 sq. feet)



Total area: approx. 82.3 sq. metres (885.6 sq. feet)





## Cairds The Estate Agents

Cairds The Estate Agents, 128-130 High Street - KT19 8BT

01372 743033 • [homes@cairds.co.uk](mailto:homes@cairds.co.uk) • [www.cairds.co.uk](http://www.cairds.co.uk)