



## Roach Road, E3

£484 Per week

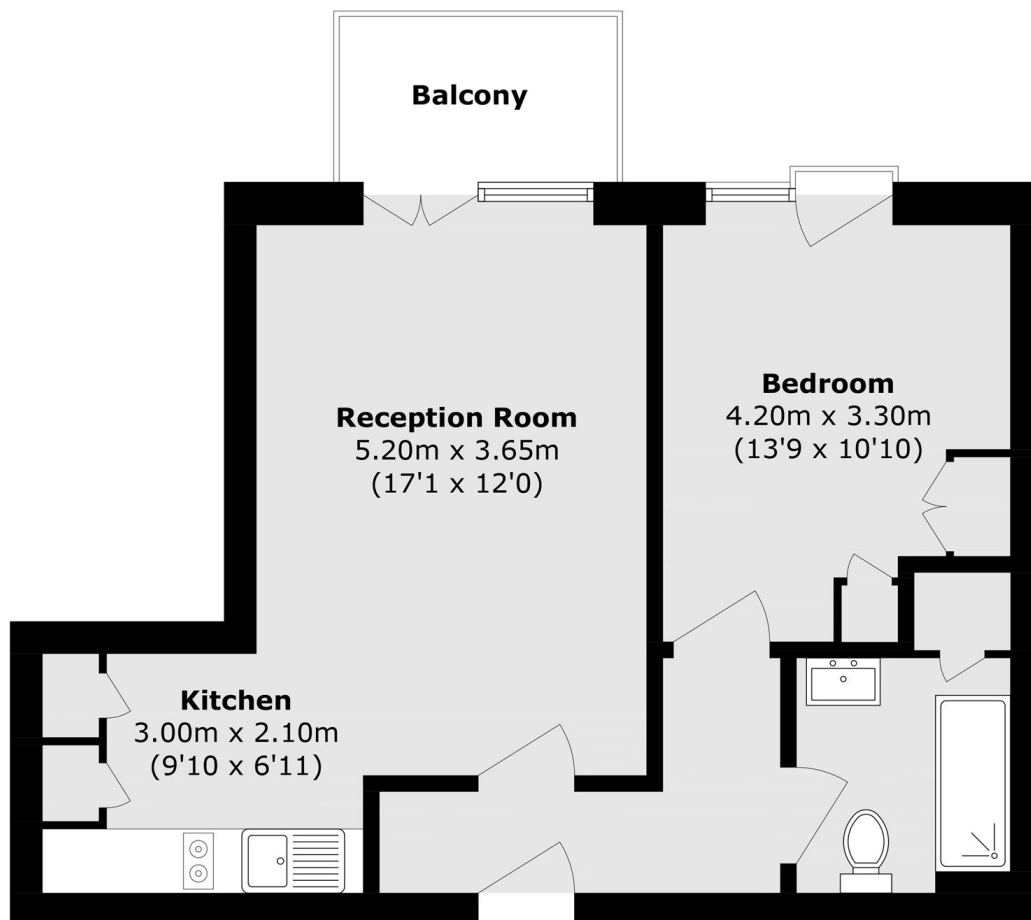
A one double bedroom apartment, Located within a secure development, this property offers an open plan living, wooden flooring with a private balcony and on-site concierge

Omega works is situated on the corner of the Hertford Union Canal and the Lea Canal in the Hackney Wick area. This property has an abundance of Popular eateries, cafés and bars on its doorstep.

### Features

- One Double Bedrooms
- Open Plan
- Private Balcony
- Wooden flooring throughout
- Concierge
- Furnished

Roach Road,  
London, E3



Total area (approx.): 49.2 sq. m (529.6 sq. ft)  
Balcony area (approx.): 4.03 sq. m (43.4 sq. ft)