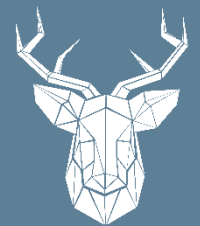




Arctic Road
Cowes
£210,000



Lancasters

Beautiful Victorian Cottage overlooking the River Medina
3 Bedrooms. Available Chain Free.



3 Bedroom Terraced House

Entrance

Timber door with glass panels to small lobby, beautiful feature door to hallway.

Study 11' 0" x 7' 10" (3.35m x 2.39m)

Original sash window to the front. Open fire place with wooden surround and mantle. Built in cupboard to alcove with shelves over. Could be ground floor bedroom.

Lounge/Diner 11' 0" x 11' 1" (3.35m x 3.38m)

Stripped wooden floorboards. Understairs storage cupboard. Feature exposed brick chimney breast with stone hearth and log burner - Shelves to alcove.

Kitchen 9' 2" x 9' 4" (2.8m x 2.84m)

Fitted with a range of painted wooden base and wall units, tiled work surface. Double glazed skylights allow light to flood in. Space for gas oven and fridge. Space & plumbing for washing machine. Inset one and a half bowl sink and drainer with mixer tap. Another beautiful glass panel door to lobby. Stable door leads to courtyard garden. Storage cupboard.

Bathroom

Recently refitted with a smart white suite comprising of panelled bath with shower over and glass shower screen. Pedestal hand basin and low level WC. Frosted double glazed window to side.

Bedroom 1 11' 0" x 10' 11" (3.35m x 3.32m)

Lovely light front aspect bedroom with original sash window to the front with river and boat mast glimpses. Built in cupboard.

Bedroom 2 11' 0" x 10' 11" (3.35m x 3.34m)

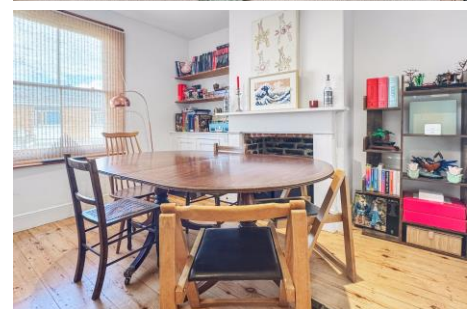
Rear aspect bedroom. Beautiful 'arched' borrowed lights. Large single glazed window. Original fireplace with wooden surround and mantel. Large built in storage with combination boiler. Stairs up to...

Attic Room 10' 10" x 10' 10" (3.3m x 3.3m)

Currently set up as a double bedroom. Two 'Velux' windows with far reaching views across the roof tops, up and down the River Medina. Under eaves storage.

Outside

Steps lead up to a small enclosed courtyard, low maintenance West facing, perfect spot to enjoy a glass of wine of an evening or BBQ's.



GROUND FLOOR
443 sq.ft. (41.1 sq.m.) approx.

1ST FLOOR
273 sq.ft. (25.3 sq.m.) approx.

2ND FLOOR
122 sq.ft. (11.3 sq.m.) approx.

Want more photos and a video? Scan here

Lancasters Estate Agents
Osborne Court | The Parade | Cowes | Isle of Wight | PO31 7QS
01983 209020 Homes@Lancasters.org

Tenure: Freehold
Council: B
EPC: D



These sales particulars do not form part of any contract. The agent has not undertaken any form of survey on the property and has not checked any services. If you decide to purchase this, or any other property, we advise you undertake your own enquiries via your separately appointed solicitor and surveyor.