



Homefield Road, Coulsdon, CR5 1ES

£495,000

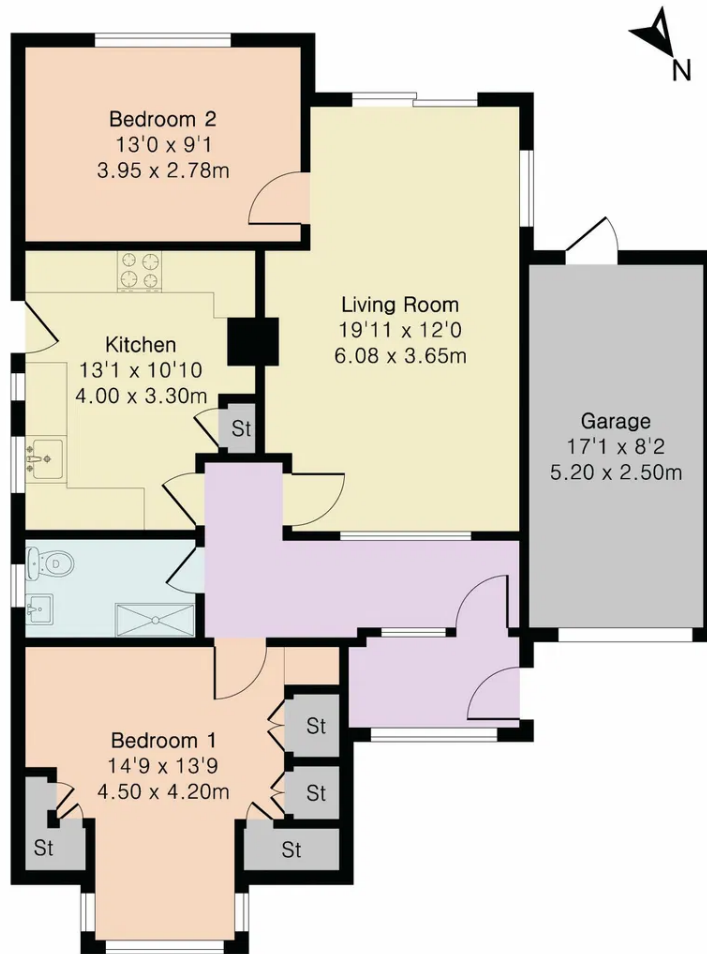
- TWO BEDROOMS
- FAMILY BATHROOM
- GAS CENTRAL HEATING
- GARAGE
- COUNCIL TAX BAND - E
- LIVING ROOM
- KITCHEN
- DRIVEWAY
- EPC - C

Bedrooms: 2 | Bathrooms: 1 | Receptions: 1

Property Type: Link Detached House

**Approximate Gross Internal Area 834 sq ft - 77 sq m
(Excluding Garage)**

Garage Area 140 sq ft - 13 sq m



Floor plan produced in accordance with RICS Property Measurement 2nd Edition. Although Pink Plan Ltd ensures the highest level of accuracy, measurements of doors, windows and rooms are approximate and no responsibility is taken for error, omission or misstatement. These plans are for representation purposes only and no guarantee is given on the total square footage of the property within this plan. The figure icon is for initial guidance only and should not be relied on as a basis of valuation.



John Brown & Mark Youll - Sales

105 Coulsdon Road, Old Coulsdon, Surrey CR5 1EH

01737 551111 | hello@johnbrownmarkyoull.co.uk | <https://www.johnbrownmarkyoull.co.uk/>