

Sparrow Drive, Orpington, BR5

4 2 2

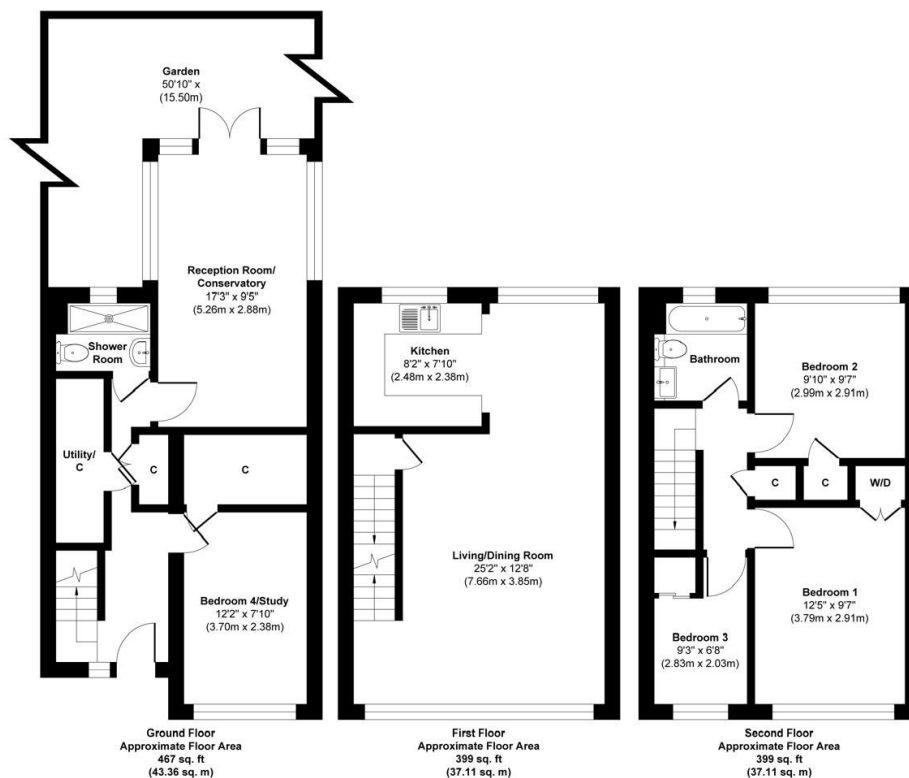


A spacious and versatile four-bedroom terraced home in Orpington, BR5. Offering flexible living across three floors, this property features a private garden, driveway, modern interiors, and a newly installed boiler (May 2024). Ideally located within walking distance of Sparrow Wood & Crofton Heath and Orpington train station.

Key Features

- Please Quote RF0924 for all Enquires
- Book a viewing today!
- Four bedrooms arranged over three floors, offering flexible living space
- Bright reception/conservatory opening directly onto the garden
- Large open-plan living/dining room spanning the first floor
- Modern fitted kitchen with good storage and workspace
- Ground floor shower room plus top-floor family bathroom
- Private rear garden with patio, lawn, mature shrubs, and rear access
- New boiler installed May 2024 for energy efficiency and peace of mind
- Walking distance of Sparrow Wood & Crofton Heath, Orpington train station, Petts Wood station highly regarded Ofsted "Outstanding" schools

Sparrow Drive, Orpington, BR5 1RZ



Approx. Gross Internal Floor Area 1265 sq. ft / 117.58 sq. m

Illustration for identification purposes only, measurements are approximate, not to scale.

Produced by Elements Property