



Trinity Road

London, SW17

Guide Price £400,000

A spacious first floor one bedroom flat with a share of the freehold set within an attractive Victorian property, located close to both Wandsworth Common and Tooting Bec.



Trinity Road

London, SW17

- One-bedroom Victorian conversion flat
- Eat in kitchen
- Separate reception room
- Double bedroom with fitted wardrobes
- Modern bathroom
- Share of Freehold
- Close to the open spaces of Wandsworth Common



Presenting to the market this beautifully bright and generously proportioned one-bedroom flat, ideally positioned on the highly desirable Trinity Road, just moments from the vibrant amenities of Bellevue Road.

Set on the first floor of an impressive Victorian property, this charming home offers well-balanced accommodation comprising a spacious dine-in kitchen, a bright and separate reception room, a stylish contemporary bathroom, and a large double bedroom complete with extensive fitted storage.

Perfectly located for both convenience and lifestyle, the property is approximately a 7-minute walk from Wandsworth Common station and just a 10-minute walk from Tooting Bec Underground station, providing excellent transport links into The City and beyond. Residents will also benefit from frequent bus routes towards Clapham Junction and Wimbledon, as well as being moments from the expansive green spaces of both Wandsworth Common and Tooting Bec Common.

Combining period charm, generous proportions, and an exceptional location, this delightful home is perfectly suited to first-time buyers, professionals, or investors alike.

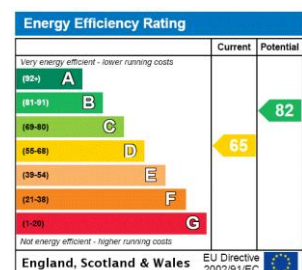
Tenure: Share of Freehold

Service Charge: £2500

Ground Rent: £0

Local Authority: London Borough of Wandsworth

Council Tax Band: C



Chestertons Wandsworth Common Sales

Chestertons Estate Agents

4 Bellevue Road

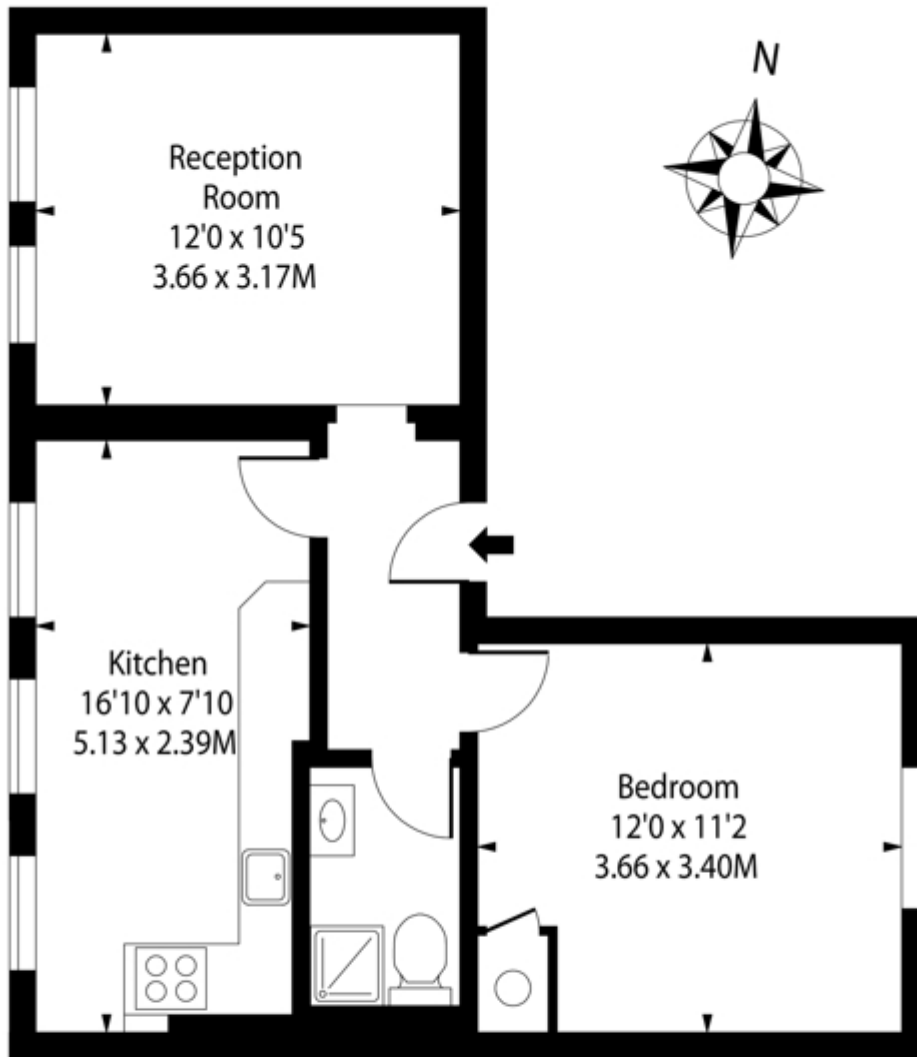
London

SW17 7EG

wcs.portals@chestertons.co.uk

chestertons.co.uk

Trinity Road, SW17



First Floor

Approx Gross Internal Area **476 Sq Ft - 44.22 Sq M**

For Illustration Purposes Only - Not to Scale

Ref: No. 41377

