



## High Meadows

Midsomer Norton, BA3 2RY

Offers In Excess Of £425,000

Vendors comments - "What we love about our house is that it's situated in a beautiful cul-de-sac and it's a lovely community. We have a very spacious home with unique features, the sun shines on our back garden all day and we have our much loved woodburner that's located in our large living room. It's a great house for a family to grow and expand."

- Spacious throughout
- Annex style accommodation
- En-suite to main bedroom
- Great sized rooms
- Large garden
- Cul-de-sac location

### Viewing

Please contact our Bath Stone Property (MSN) Office on 01761 360144

if you wish to arrange a viewing appointment for this property or require further information.



5



2

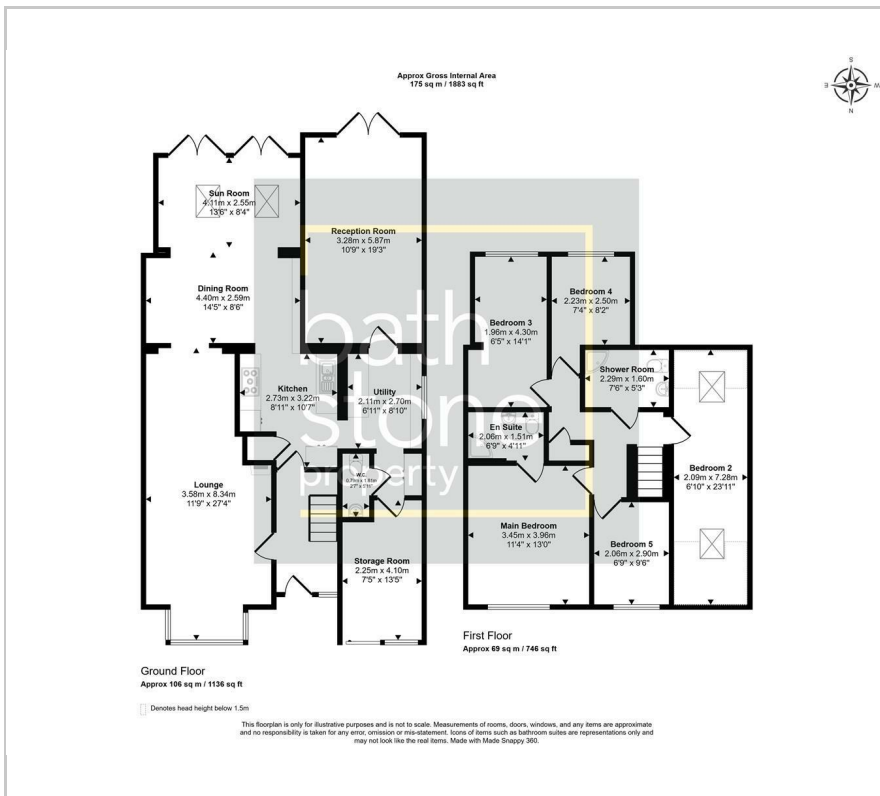


4



C

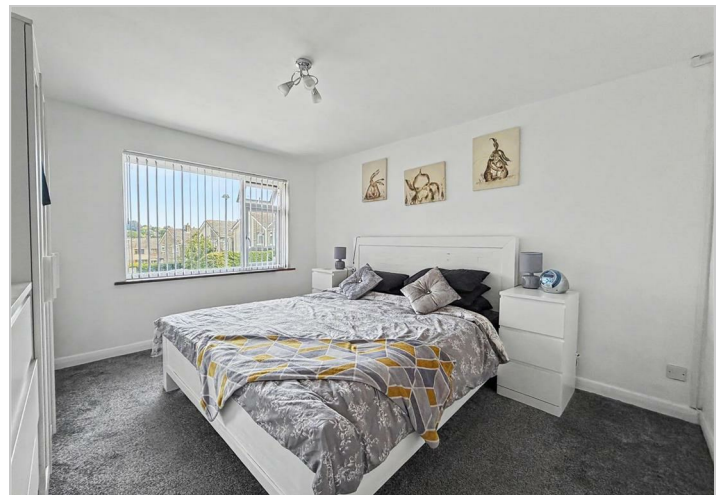
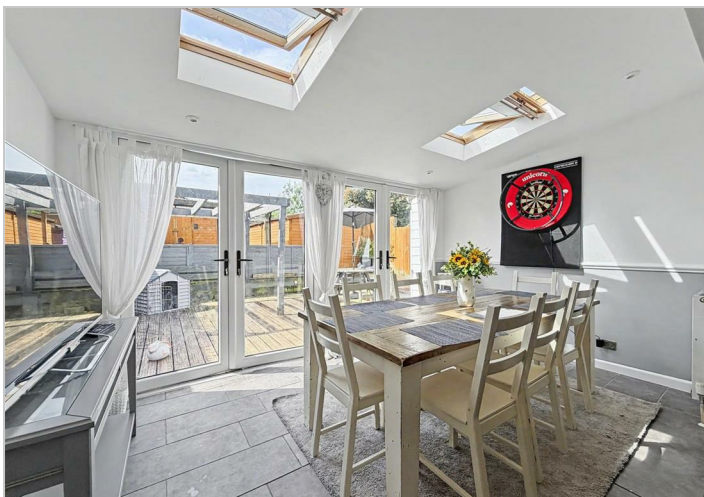
# Floor Plan



# Energy Efficiency Graph

Energy Efficiency Rating		Current	Potential
Very energy efficient - lower running costs			
(92 plus) <b>A</b>			
(81-91) <b>B</b>			
(69-80) <b>C</b>		<b>70</b>	<b>76</b>
(55-68) <b>D</b>			
(39-54) <b>E</b>			
(21-38) <b>F</b>			
(1-20) <b>G</b>			
Not energy efficient - higher running costs			
<b>England &amp; Wales</b>		EU Directive 2002/91/EC	

Please give us Feedback



These particulars, whilst believed to be accurate are set out as a general outline only for guidance and do not constitute any part of an offer or contract. Intending purchasers should not rely on them as statements of representation of fact, but must satisfy themselves by inspection or otherwise as to their accuracy. No person in this firm's employment has the authority to make or give any representation or warranty in respect of the property.