



Guide Price
£60,000

2x  1x  2x 

**Merrywood Park,
Ashurst Drive,
Tadworth, Surrey, KT20**

cubitt & west
Helping you move forwards



Main features

- Over 50's Park Home
- Garage and Driveway
- Potential for improvement
- Close to Box Hill National Trust

Accommodation

GROUND FLOOR

Entrance

Kitchen: 13'10 x 8'2 (4.22m x 2.49m)

Dining Area: 9'8 x 7'0 (2.95m x 2.14m)

Lounge: 19'0 x 10'9 (5.80m x 3.28m)

Bedroom 1: 12'6 x 9'5 (3.81m x 2.87m)

Bedroom 2: 9'5 x 8'0 (2.87m x 2.44m)

OUTSIDE

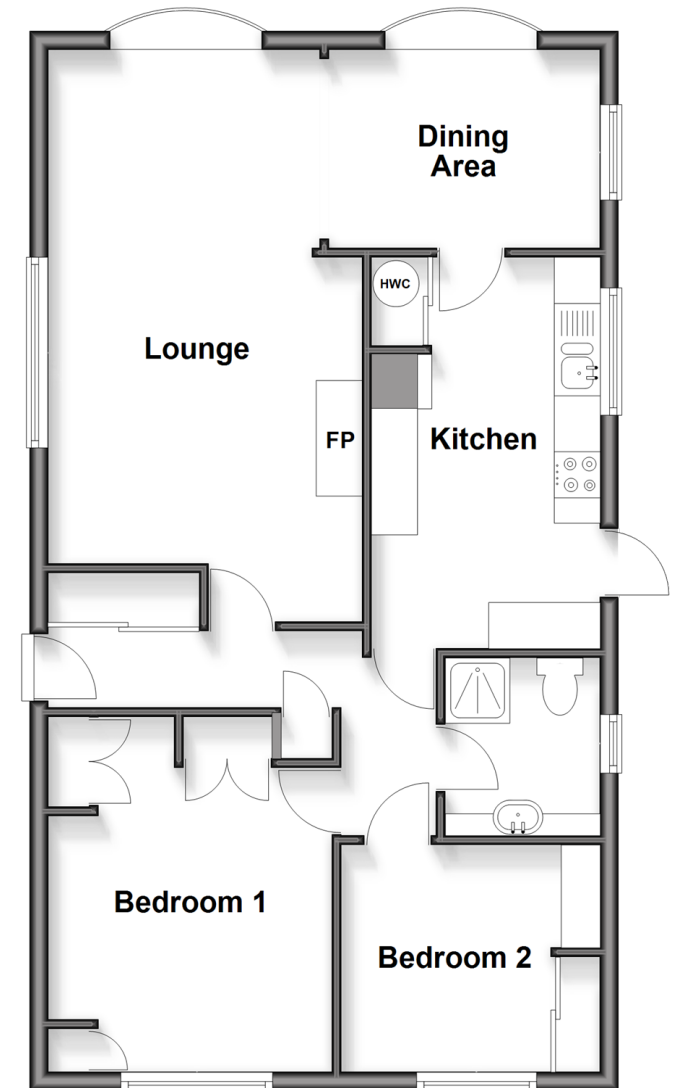
Garden

Patio

Garage

Ground Floor

Approx. 66.8 sq. metres (719.4 sq. feet)



Call Banstead - 01737 352233 ■ cubittandwest.co.uk

- If buying to let, the energy rating will need to be improved to at least 'E' rating before you can let the property
- Legal advice should be taken to verify fixtures/fittings, planning, alterations and/or lease details
- Appliances & services are untested, dimensions are approximate and floor plans are not to scale



20110043/20260316/MG/OK