



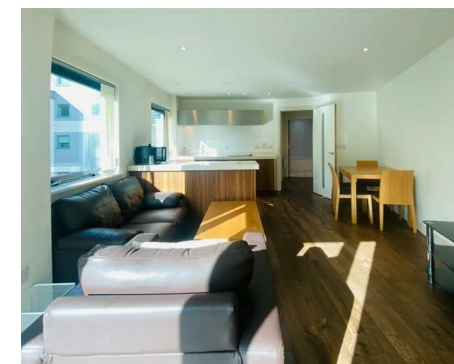
Let **UK** Home

**1 Bedrooms**

**Flat**

**Located  
in Birmingham**

**£950 Per Month**



[pmadmin@letukhome.co.uk](mailto:pmadmin@letukhome.co.uk)

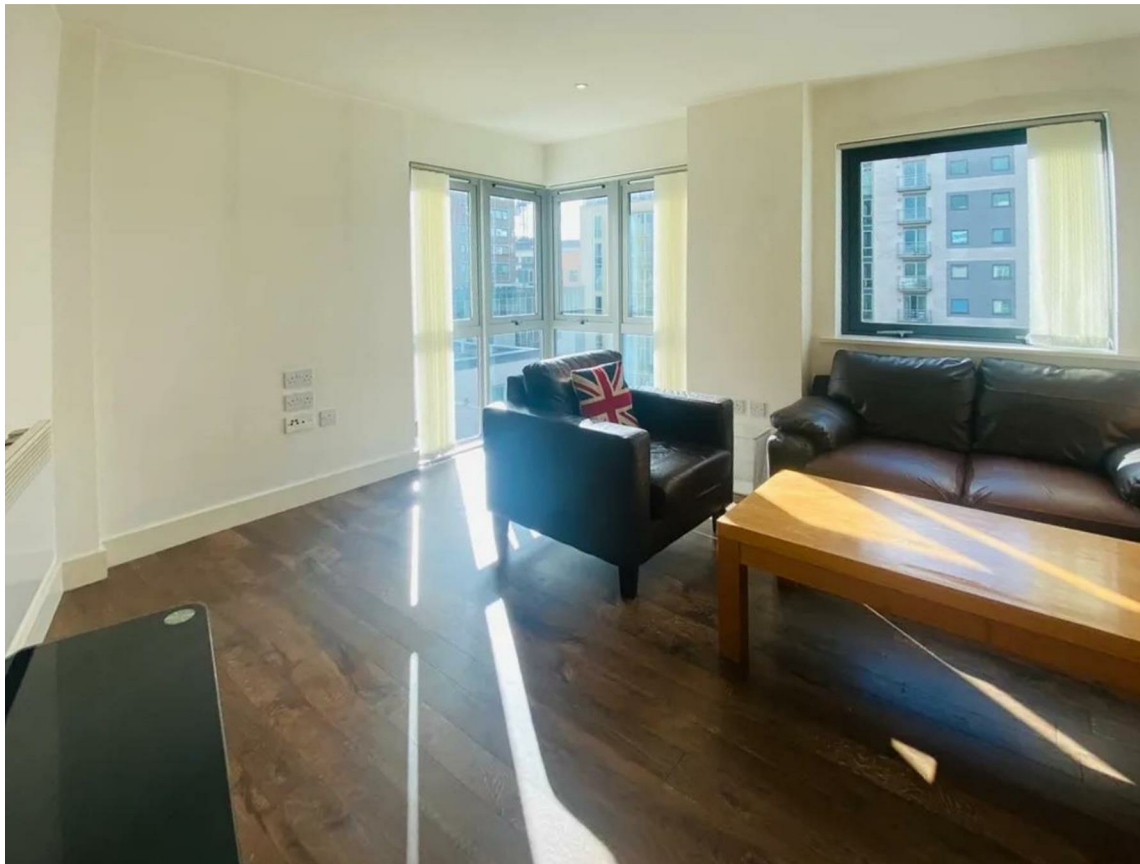
<https://www.letukhome.co.uk/>

0121 828 8955



# 90 Navigation Street Birmingham

B5 4AA



Let UK Home are delighted to offer this one bedroom apartment, part of Orion Building development, situated in Birmingham.

The flat comprises a spacious open kitchen, a living area, a magnificent bedroom and a large bathroom.

Residents here can enjoy concierge service. The development features practical and comfortable shared amenities, alongside an on-site Sainsbury's Local supermarket for effortless daily groceries.

Centrally located in Birmingham city centre, the property enjoys superb transport links. Three major railway stations including New Street, Snow Hill and Moor Street are all within walking distance, providing smooth rail, metro and bus access to London and other key UK cities. It is also adjacent to the A38 main road and M6 motorway for convenient self-driving trips nationwide.

This residence sits within Birmingham's core education belt. Birmingham City University is just a short walk away, while Aston University and the University of Birmingham are easily reachable by car, perfectly catering to undergraduate and postgraduate study demands with abundant academic resources.

Surrounded by abundant lifestyle facilities in bustling central Birmingham, the development is close to Bullring&Grand Central Shopping Centre and Selfridges department store. Various restaurants and cafes are situated nearby, and authentic Chinese food can be found in the nearby Chinatown. Cultural landmarks such as

# 90 Navigation Street Birmingham

£950 Per Month



- 7th Floor
- Comfortable Shared Amenities
- Security System
- Concierge Service
- Alongside Local Supermarket
- EPC Rating: C





Let **UK** Home

Let UK Home  
JQ Modern 120 Vyse St  
Birmingham  
B18 6NF

0121 828 8955

[pmadmin@letukhome.co.uk](mailto:pmadmin@letukhome.co.uk)

**Council Tax Band: C**

**Local Authority:**

Agents Note: Whilst every care has been taken to prepare these particulars, they are for guidance purposes only. All measurements are approximate and are for general guidance purposes only and whilst every care has been taken to ensure their accuracy, they should not be relied upon and potential buyers/tenants are advised to recheck the measurements.

Energy Efficiency Rating		Current	Potential
Very energy efficient - lower running costs			
(92 plus) <b>A</b>			
(81-91) <b>B</b>			
(69-80) <b>C</b>			
(55-68) <b>D</b>			
(39-54) <b>E</b>			
(21-38) <b>F</b>			
(1-20) <b>G</b>			
Not energy efficient - higher running costs			
<b>England &amp; Wales</b>	EU Directive 2002/91/EC		

<https://www.letukhome.co.uk/>