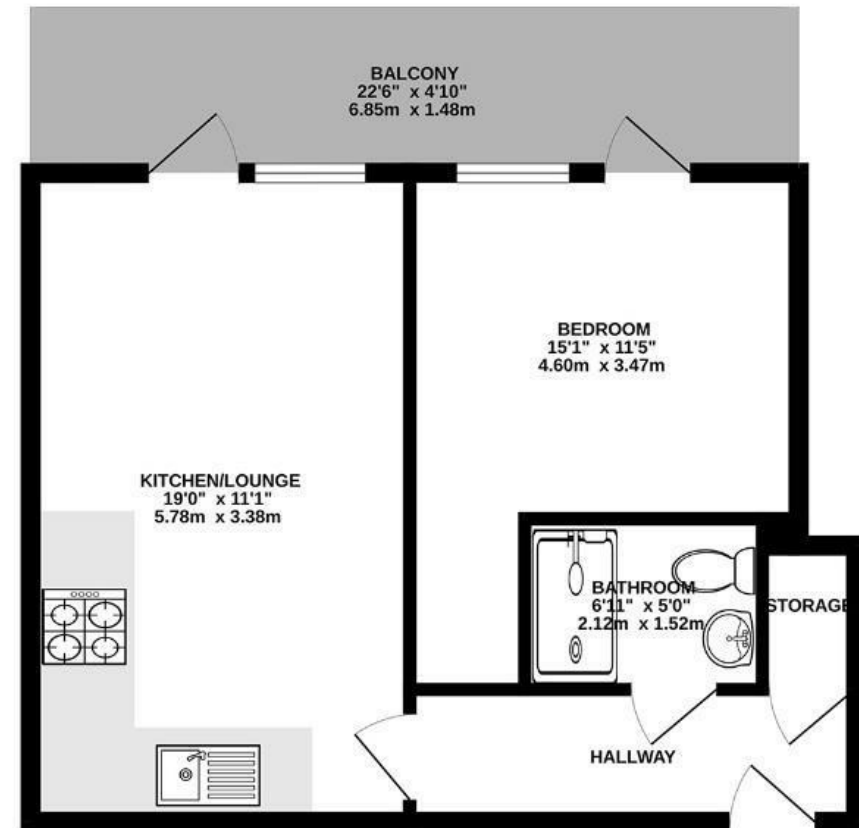


Waverley House

HARBOURSIDE

APPROXIMATE FLOOR AREA
40.9 SQM / 440 SQFT



Illustrations are for reference purposes only, measurements are approximate, not to scale.

Boardwalk

Waverley House

CATHEDRAL WALK, BRISTOL



£200,000



1 Bedrooms



BS1 5LW



1 Bathrooms

"It's lovely to sit out on the balcony after work. Living in the centre of Bristol means there's always something to enjoy — from great restaurants to events like the Harbour Festival. Watching the hot air balloons from the balcony is always special."

