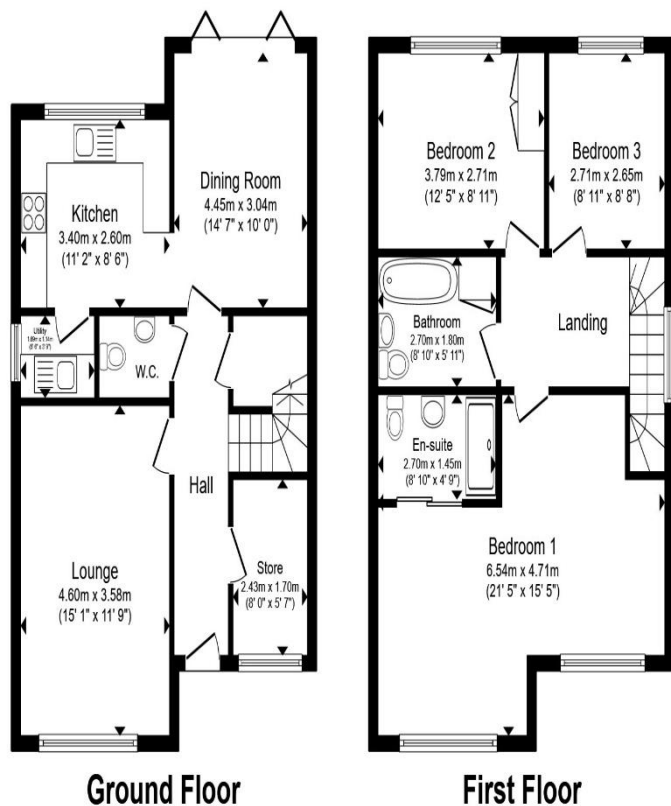






The Green, Castle Bromwich Birmingham B36 9AJ



Total floor area 112.9 m² (1,215 sq.ft.) approx

This floor plan is for illustrative purposes only. It is not drawn to scale. Any measurements, floor areas (including any total floor area), openings and orientation are approximate. No details are guaranteed, they cannot be relied upon for any purpose and they do not form part of any agreement. No liability is taken for any error, omission or misstatement. A party must rely upon its own inspection(s). Powered by www.propertybox.io



welcome to The Green, Castle Bromwich Birmingham

- DETACHED
- THREE DOUBLE BEDROOMS
- TWO RECEPTION ROOMS

Tenure: Freehold

EPC Rating: C

- KITCHEN DINER
- MASTER BEDROOM WITH EN SUITE

Council Tax Band: E

£400,000



Approach
Entrance Hall
Cloakroom
Lounge

5' 11" plus Bay x 11' 8" (1.80m plus Bay x 3.56m)

Study

5' 6" x 8' (1.68m x 2.44m)

Dining/Kitchen

21' 7" x 14' max 8.6 min (6.58m x 4.27m max 8.6 min)

Utility

First Floor Landing

Bedroom One

19' 6" max x 10' 3" min by 11.8 max 9.5 min (5.94m max x 3.12m min by 11.8 max 9.5 min)

Ensuite

Bedroom Two

10' 1" min x 8' 9" + door recess (3.07m min x 2.67m + door recess)

Bedroom Three

11' 1" x 9' (3.38m x 2.74m)

Family Bathroom

Rear Garden

Detached Garage

17' 9" x 8' 2" (5.41m x 2.49m)



Property Ref:

CAB111994 - 0007



0121 747 4722



castlebromwich@ship



258 Chester Road, Ca:
BIRMINGHAM, West M





shipways.co.uk

view this property online shipways.co.uk/Property/CAB111994

1. MONEY LAUNDERING REGULATIONS Intending purchasers will be asked to produce identification documentation at a later stage and we would ask for your co-operation in order that there is no delay in agreeing the sale. 2. These particulars do not constitute part or all of an offer or contract. 3. The measurements indicated are supplied for guidance only and as such must be considered incorrect. Potential buyers are advised to recheck measurements before committing to any expense. 4. We have not tested any apparatus, equipment, fixtures or services and it is in the buyers interest to check the working condition of any appliances. 5. Where an EPC, or a Home Report (Scotland only) is held for this property, it is available for inspection at the branch by appointment. If you require a printed version of a Home Report, you will need to pay a reasonable production charge reflecting printing and other costs. 6. We are not able to offer an opinion either written or verbal on the content of these reports and this must be obtained from your legal representative. 7. Whilst we take care in preparing these reports, a buyer should ensure that his/her legal representative confirms as soon as possible all matters relating to title including the extent and boundaries of the property and other important matters before exchange of contracts.

