



turners



Saltmer Close

Ilfracombe, EX34 8LY

Price Guide £300,000



12 Saltmer Close

Ilfracombe, EX34 8LY

Price Guide £300,000



Property Description

Situated within the highly sought-after Saltmer Close, nestled in a picturesque valley setting, this beautifully presented detached bungalow offers a wonderful blend of modern living and natural surroundings. Ideally positioned, the property benefits from easy access to the renowned Tarka Trail, scenic public footpaths, and the South West Coast Path—perfect for those who enjoy the outdoors.

The accommodation comprises two well-proportioned double bedrooms, alongside a spacious living room that enjoys attractive woodland views, creating a bright and relaxing environment. The property further benefits from a stylish, modern fitted kitchen, thoughtfully designed with integrated appliances and a breakfast bar, ideal for both everyday living and entertaining. A contemporary three-piece family bathroom completes the internal accommodation.

Externally, the home features a tiered rear garden, with a low-maintenance lower level providing an excellent space for outdoor furniture and al fresco dining. To the front, there are two allocated off-road parking spaces, in addition to a single garage.

Conveniently located, the property is just a short drive from the coastal town of Ilfracombe, as well as the highly desirable beaches of Woolacombe and Lee Bay. Offered to the market chain-free, this delightful home would suit a range of buyers seeking a peaceful yet accessible coastal lifestyle.

Location

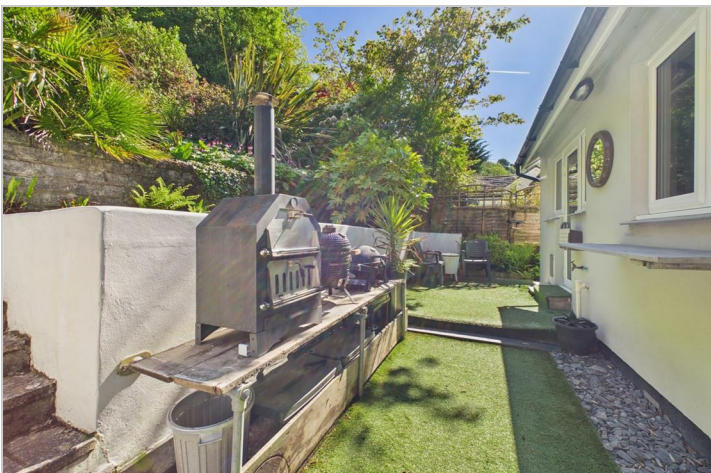
Ilfracombe town offers a variety of independent shops, art galleries, restaurants and bars. The picturesque seafront and harbour area is home to artist Damien Hirst's 'Verity' statue at the harbour entrance. In addition is the exciting new water sports centre and café making the harbour a hive of activity.

North Devon has a wealth of simply stunning golden sand beaches and has long been a mecca for British surfers. The area has recently been declared a 'world surfing reserve', one of just 12 places on the planet along with Australia's Golden Coast and Malibu in California.

Directions

From our office head down the High Street towards Meridian Place for 0.3 miles until you reach the roundabout where you will take the first exit and bear right eventually turning road onto Church Hill. At the top of Church Hill turn left onto Belmont Road and continue onto Slade Road for around 0.6 miles where you will turn left onto Saltmer Close. Turn left at the end of the road where you will find the property on on your right hand side just down the road.

What3words: winemaker.enabling.spells



Road Map



Hybrid Map



Terrain Map



Floor Plan



Viewing

Please contact our Turners Property Centre Office on 01271 866421 if you wish to arrange a viewing appointment for this property or require further information.

These particulars, whilst believed to be accurate are set out as a general outline only for guidance and do not constitute any part of an offer or contract. Intending purchasers should not rely on them as statements of representation of fact, but must satisfy themselves by inspection or otherwise as to their accuracy. No person in this firm's employment has the authority to make or give any representation or warranty in respect of the property.

135 High Street, Ilfracombe, Devon, EX34 9EZ
Tel: 01271 866421
Email: sales@turnerspropertycentre.co.uk
<https://www.turnerspropertycentre.co.uk>

Energy Efficiency Graph

