

shepherds

A better home
moving experience



37 Bengo Mews

Bengo, SG14 3TL

Price Guide £450,000



37 Bengoe Mews

Bengoe, SG14 3TL

SOLD BY SHEPHERDS -Offered to the market CHAIN FREE, this attractive three-bedroom end terrace home is peacefully situated within the highly sought-after Bengoe Mews development, in the heart of popular Bengoe. Enjoying a quiet tucked-away position the property presents an excellent opportunity for families, downsizers and professional buyers alike.

The accommodation is bright and well-proportioned throughout, comprising an entrance hall with CLOAKROOM/WC, a spacious living room and a separate dining room with direct access onto the rear garden, creating an ideal space for both everyday living and entertaining. The fitted kitchen offers ample storage and worktop space, whilst upstairs the property benefits from three bedrooms, including a generous principal bedroom with fitted wardrobes, alongside a family bathroom. The property has been well cared for over the years and now offers exciting potential for a purchaser to update and personalise to their own taste and specification, creating a wonderful long-term home.

Externally, the home enjoys a private enclosed rear garden with a paved patio seating area, mature planting and gated side access, providing a peaceful outdoor retreat with plenty of privacy. As an end terrace property, the house benefits from additional natural light and a greater sense of space, complemented by its attractive brick-built façade and charming mews setting. Further benefits include a GARAGE to the rear and well-maintained communal surroundings.

Bengoe remains one of Hertford's most desirable residential locations, favoured for its excellent local schooling, nearby walks. A range of local shops, cafés and amenities are also within easy reach, making this a superb opportunity to acquire a home in an enviable location with plenty of future potential.

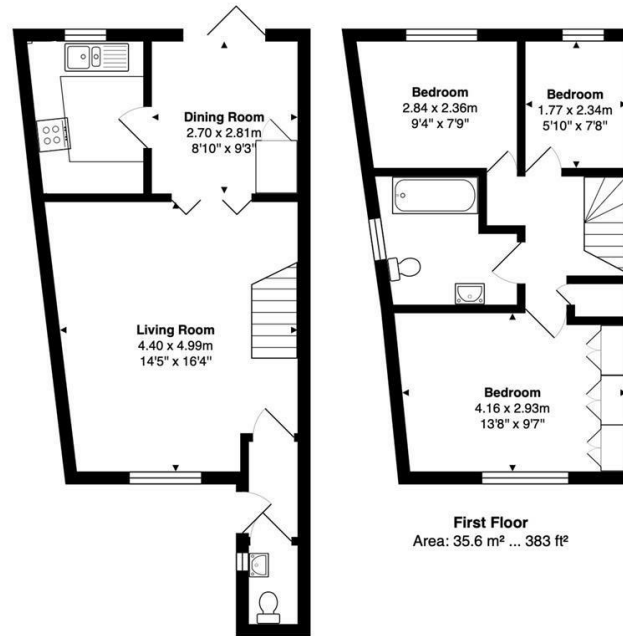




- Chain free sale
- Three-bedroom end terrace home
- Highly sought-after Bengo Mews location
- Spacious living room and separate dining room
- Private enclosed rear garden with patio area
- Well-maintained throughout with scope to modernise and personalise
- First floor bathroom and additional ground floor cloakroom
- Garage to the rear



Floor Plan



Ground Floor
Area: 38.8 m² ... 418 ft²

First Floor
Area: 35.6 m² ... 383 ft²

Total Area: 74.4 m² ... 801 ft²

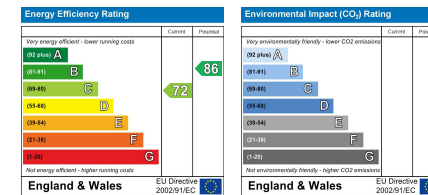
FOR ILLUSTRATIVE PURPOSES ONLY; NOT TO SCALE
Whilst every attempt has been made to ensure the accuracy of the floor plan shown, all measurements, positioning, fixtures, features, fittings and any other data shown are an approximate interpretation for illustrative purposes only and are not to scale. No responsibility is taken for any error, omission, miss-statement or use of data shown.
Property marketing provided by www.matthewkyle.co.uk

Viewing

Please contact Shepherds of Hertford on 01992 551955 if you wish to arrange a viewing appointment for this property or require further information.

Tenure
Freehold

Energy Performance Graph



These particulars, whilst believed to be accurate are set out as a general outline only for guidance and do not constitute any part of an offer or contract. Intending purchasers should not rely on them as statements of representation of fact, but must satisfy themselves by inspection or otherwise as to their accuracy. No person in this firm's employment has the authority to make or give any representation or warranty in respect of the property.

Riverside House, 6 Millbridge, Hertford, SG14 1PY
Tel: 01992 551955 Email: enquiries@shepherdsfhertford.co.uk