



Connells

Martin Close
Buckingham



Property Description

In a peaceful and highly sought-after location, just a short walk from the town centre, this attractive family home offers well-planned accommodation, generous parking, and a beautifully maintained garden.

The property is approached via a large driveway providing off-road parking, leading to an integral garage fitted with an electric roller door.

Upon entering, the hall provides access to the principal ground-floor rooms and the staircase to the first floor. The ground floor comprises a spacious sitting room to the front of the property, ideal for relaxation, and a separate dining room to the rear, which opens into a bright conservatory overlooking the garden, creating a versatile additional living space. The kitchen is conveniently positioned adjacent to the dining room and is well arranged for everyday use, complemented by a practical ground-floor WC.

To the first floor, a central landing leads to four bedrooms. The principal bedroom benefits from an en-suite shower room, while three further well-proportioned bedrooms are served by a modern family shower room.

Outside, the property enjoys a beautifully landscaped rear garden, which is enhanced by established plant borders, providing an attractive and private space for outdoor enjoyment.

Combining a tranquil yet central setting, generous accommodation, excellent parking, and attractive outdoor space, this property represents a rare opportunity in a highly desirable location.

Mortgage Services

Connells Buckingham have an experienced Mortgage Consultant who can offer advice and recommend products based on your circumstances. For more information on our fantastic services, contact us.

Entrance Hall

Sitting Room

15' 9" x 11' 1" (4.80m x 3.38m)

Dining Room

9' x 11' 2" (2.74m x 3.40m)

Kitchen

11' 11" x 10' 10" (3.63m x 3.30m)

Cloakroom

Conservatory

10' x 11' 2" (3.05m x 3.40m)

Master Bedroom

11' 6" x 11' 3" (3.51m x 3.43m)

Measured to built in wardrobes

En Suite

Bedroom 2

12' 8" x 8' 3" (3.86m x 2.51m)

Bedroom 3

7' 1" x 11' 3" (2.16m x 3.43m)

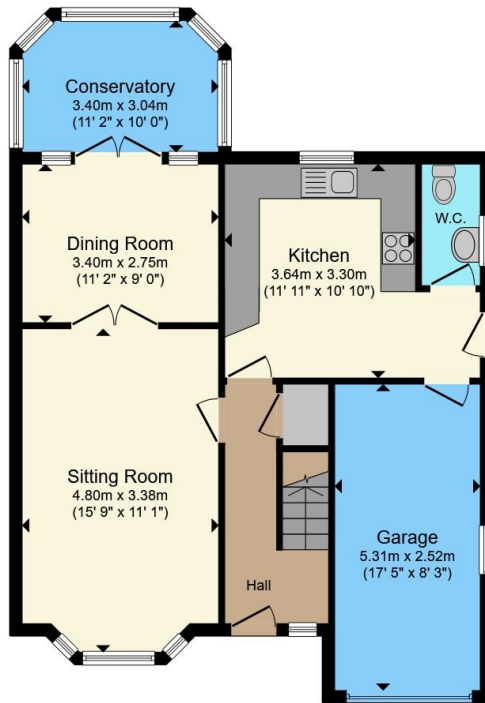
Measured to built in wardrobes

Bedroom 4

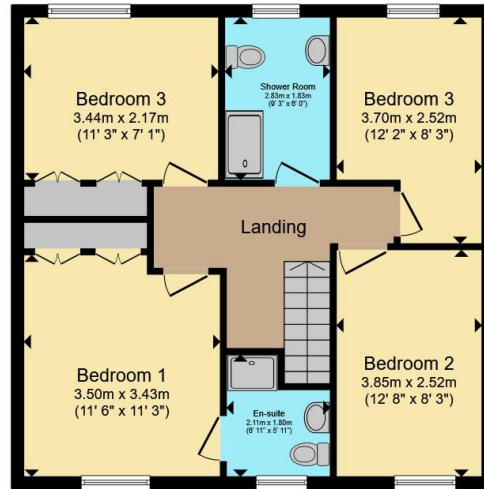
12' 2" x 8' 3" (3.71m x 2.51m)

Bathroom





Ground Floor



First Floor

Total floor area 138.1 m² (1,486 sq.ft.) approx

This floor plan is for illustrative purposes only. It is not drawn to scale. Any measurements, floor areas (including any total floor area), openings and orientation are approximate. No details are guaranteed, they cannot be relied upon for any purpose and they do not form part of any agreement. No liability is taken for any error, omission or misstatement. A party must rely upon its own inspection(s). Powered by www.propertybox.io



To view this property please contact Connells on

T 01280 822 727
E buckingham@connells.co.uk

2 West Street
 BUCKINGHAM MK18 1HL

EPC Rating: Council Tax
 Awaited Band: E

view this property online connells.co.uk/Property/BUK308211

Tenure: Freehold



1. MONEY LAUNDERING REGULATIONS Intending purchasers will be asked to produce identification documentation at a later stage and we would ask for your co-operation in order that there will be no delay in agreeing the sale. 2. These particulars do not constitute part or all of an offer or contract. 3. The measurements indicated are supplied for guidance only and as such must be considered incorrect. Potential buyers are advised to recheck measurements before committing to any expense. 4. We have not tested any apparatus, equipment, fixtures, fittings or services and it is in the buyers interest to check the working condition of any appliances.

Connells Residential is registered in England and Wales under company number 1489613, Registered Office is Cumbria House, 16-20 Hockliffe Street, Leighton Buzzard, Bedfordshire, LU7 1GN. VAT Registration Number is 500 2481 05.

See all our properties at www.connells.co.uk | www.rightmove.co.uk | www.zoopla.co.uk

Property Ref: BUK308211 - 0002