



Luscombe Maye

Since 1873

Fore Street, Aveton Gifford

Guide Price £220,000

🛏️ 2 🚿 1 🚺 1



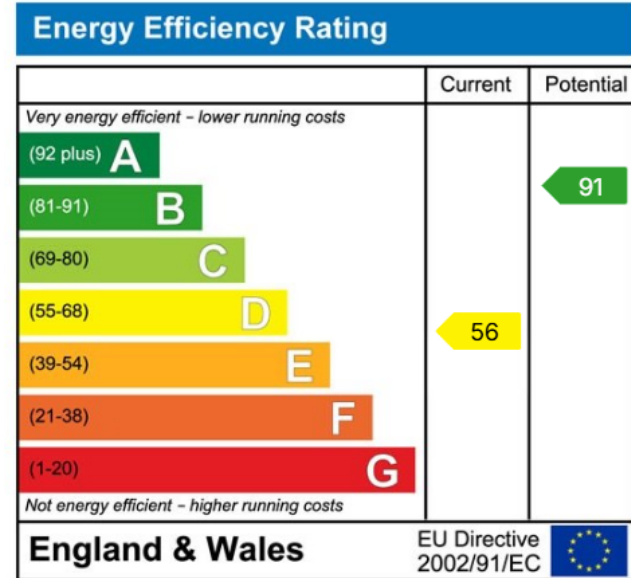
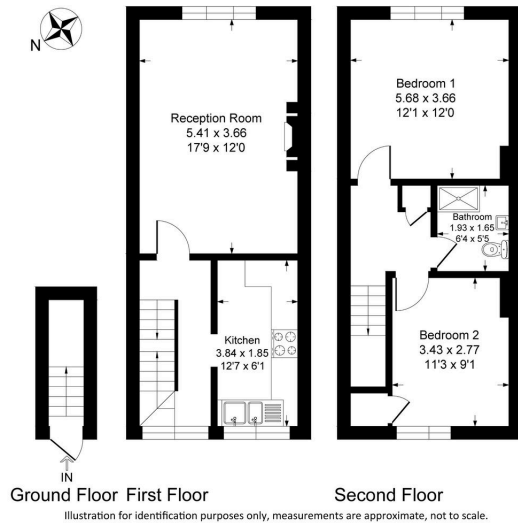
- Sought after village location
- Easy access to the River Avon
- Short drive to nearby towns of Kingsbridge and Modbury
- Walking distance to amenities
- Naturally light and bright
- Countryside views
- Two double bedrooms



A spacious two bedroom property in the heart of Aveton Gifford with a generous detached garden.



2 Endsleigh Place, Aveton Gifford, TQ7 4LR
 Approximate Gross Internal Floor Area = 68.7 sq m / 740 sq ft



Important Notice: Luscombe Maye gives notice that: 1. These particulars do not constitute an offer or contract or part thereof. 2. All descriptions, photographs and plans are for guidance only and should not be relied upon as statements or representations of fact. All measurements are approximate and not necessarily to scale. Any prospective purchaser must satisfy themselves of the correctness of the information within the particulars by inspection or otherwise. 3. Luscombe Maye does not have any authority to give any representations or warranties whatsoever in relation to this property (including but not limited to planning/building regulations), nor can it enter into any contract on behalf of the Vendor.



Modbury:
 3 Church Street, Modbury, Ivybridge PL21 0QW
 01548 830831
 modbury@luscombemaye.com
www.luscombemaye.com