



**No Display Address Found**

Offers Over **£220,000**

**Bedrooms: 3 | Bathrooms: 2 | Receptions: 1**

Agent Code KY009

Set within the charming village of Llanfachell on the highly sought-after Isle of Anglesey, Neuadd Yr Ysgol (The Old School House) is a beautifully converted Edwardian property offering a rare opportunity to own a character home in North Wales. Blending original period features with modern open-plan living, this unique three-bedroom residence delivers an exceptional lifestyle in a peaceful coastal setting, ideal for buyers searching for a distinctive home for sale in Anglesey with charm, space, and proximity to the sea.

Once a hub of the local community, the former school house now offers a unique three-bedroom, two-bathroom layout, centred around a bright open-plan lounge and kitchen. A fitted log burner creates a cosy focal point, while retained features such as high ceilings and generous proportions give a real sense of character and history. The overall feeling is one of warmth, space, and something genuinely unique.

Life here is about more than the home itself. Surrounded by open countryside, Llanfachell offers a peaceful, community-led lifestyle, with landmarks such as St Machraeth's Church at its heart and scenic walks right from your doorstep. Yet, you're only a short drive from Amlwch, where you'll find local shops, cafés, and everyday amenities.

The nearby coastline adds another dimension to daily life. Cemaes Bay offers sandy beaches, a picturesque harbour, and a relaxed seaside atmosphere, perfect for family days out or waterside dining. Meanwhile, Bull Bay provides a more rugged coastal escape, popular for fishing, coastal walks, and home to the striking Bull Bay Golf Club.

With excellent road links across Anglesey and into mainland North Wales, this is a lifestyle defined by balance, peaceful village living with easy access to vibrant coastal spots. Whether it's morning walks, afternoons by the sea, or evenings by the fire, Neuadd Yr Ysgol offers a way of life that feels both connected and calm.

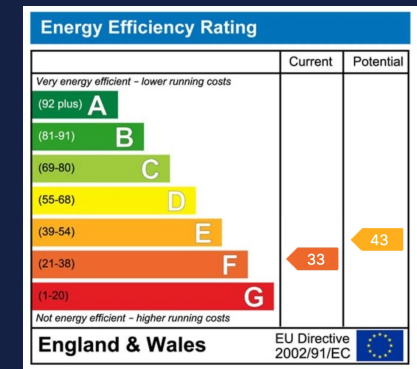
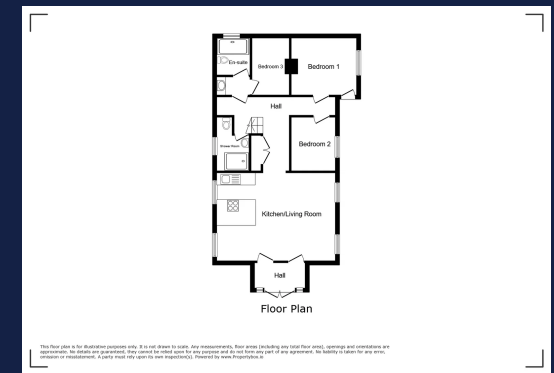
**Tenure:** Freehold

**Property Type:** Character Property

- No onward Chain
- Former School House
- 3 Bed Detached
- Village setting
- 2 Bathrooms
- Retained period features with modern touches
- Close to Amlwch and local amenities
- Close to the coastline including Cemaes Bay and Bull Bay
- [kellyyoung\\_personalestateagent](#)







**Signature Property Partners - Kelly Young**

82 Water Lane Wilmslow SK9 5BB

07704 486 061

kelly.young@signaturepp.co.uk

<https://signaturepropertypartners.co.uk/>