



Deers Court, Horton Road, Three Legged Cross, Wimborne, BH216FL

£210,000

🛏 2 🍳 2 🛋 1



- Detached Park Home Bungalow
- Popular 'Middleton' Design
- L-Shaped Lounge/Diner
- Double Glazing
- NO STAMP DUTY TO PAY
- Two Double Bedrooms
- Ensuite To Master Bedroom
- Gated Residential Park
- Modern, Fitted Kitchen
- Superb Coastal Location

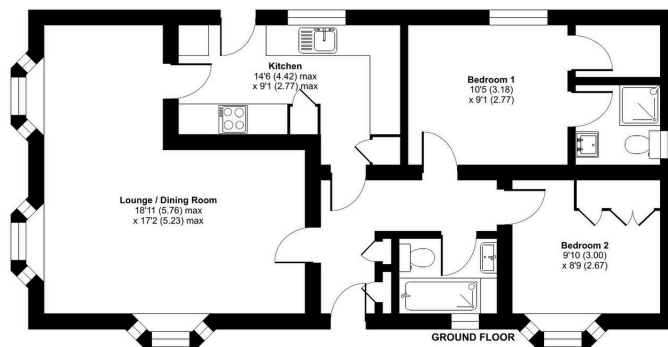


A well presented two double bedroom(40'x20') park home bungalow located on a popular gated residential park for the over 45's close to Wimborne in Dorset. This 'Middleton' design home offers spacious accommodation including a separate entrance hall, a spacious L-Shaped lounge/dining room, part-vaulted ceilings, a modern fitted kitchen with integrated appliances, a walk-in wardrobe and ensuite to the master bedroom, a second bedroom with built in wardrobes and there is a further guest bathroom. Externally there are garden areas to each side of the home and a decked, area to the rear with an electric sun canopy over and a double length driveway to the side. An internal viewing is strongly recommended.



Deers Court, Three Legged Cross, Wimborne, BH21

Approximate Area = 775 sq ft / 72 sq m
For identification only - Not to scale



Floor plan produced in accordance with RICS Property Measurement 2nd Edition, incorporating International Property Measurement Standards (IPMS2 Residential). © redroom 2025. Produced for The Park Home Agency Ltd. REF: 1309020



01793 230185

sales@theparkhomeagency.co.uk

Agents Notes: All measurements are approximate and quoted in metric with imperial equivalents and for general guidance only and whilst every attempt has been made to ensure accuracy, they must not be relied on. The fixtures, fittings and appliances referred to have not been tested and therefore no guarantee can be given that they are in working order. Internal photographs are reproduced for general information and it must not be inferred that any item shown is included with the property. For a free valuation, contact the numbers listed on the brochure