



Mountfield Road, N3

£1,850,000

Situated on a tranquil residential street is this impressive and well-appointed five bedroom semi-detached Victorian home, constructed in 1880 the property seamlessly blends period features with architect-designed modern element resulting in an exceptional sense of light and space an ideal setting for entertaining.

Mountfield Road is well located for access to Church End, Finchley Central underground, the amenities of Ballards Lane, Temple Fortune and local places of worship.

Features

- Five Bedrooms
- 5,000 Sq Ft Plot
- Four Garages
- Corner Plot
- High Ceilings
- West Facing Garden
- Basement



Mountfield Road, N3

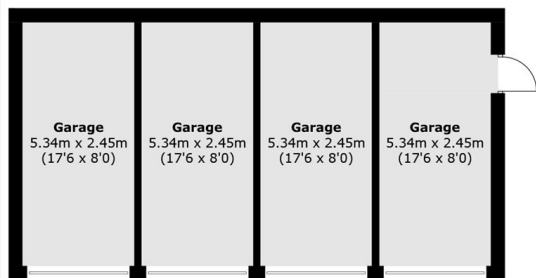
On the ground floor is a rear extension comprising an outstanding kitchen/dining room equipped with both bi-fold and sliding doors, providing access to a spacious patio and landscaped garden. The minimalistic design offers an inviting atmosphere for hosting guests.

The first floor offers four well proportioned bedrooms with built in wardrobes. Additional benefits include two lofts and four garages as a result of the property being on a corner plot, providing extensive parking and storage.

The lower ground floor provides versatile additional space, currently featuring a large, comfortable entertainment room fitted with an integrated 5.1 Dolby sound system, a compact kitchen area, a bedroom with en-suite shower room and sliding doors leading to an outdoor patio. Additionally, there is a self-contained music recording studio, professionally soundproofed for optimal acoustics.

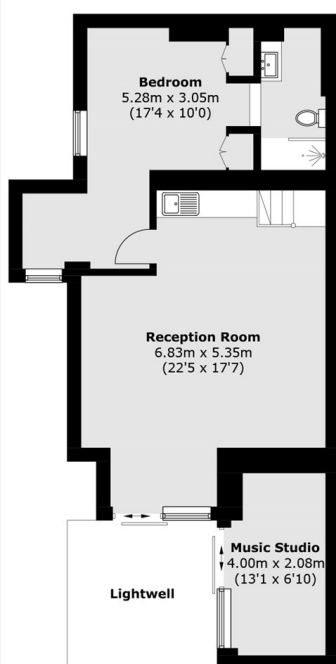


Mountfield Road, London, N3

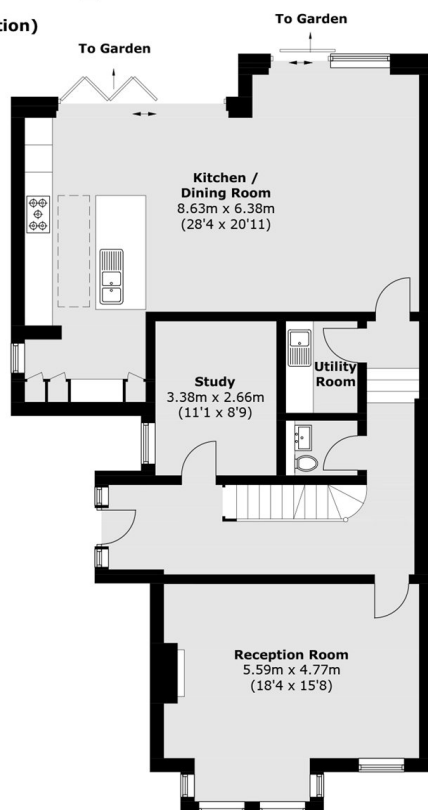


(Not Shown In Actual Location / Orientation)

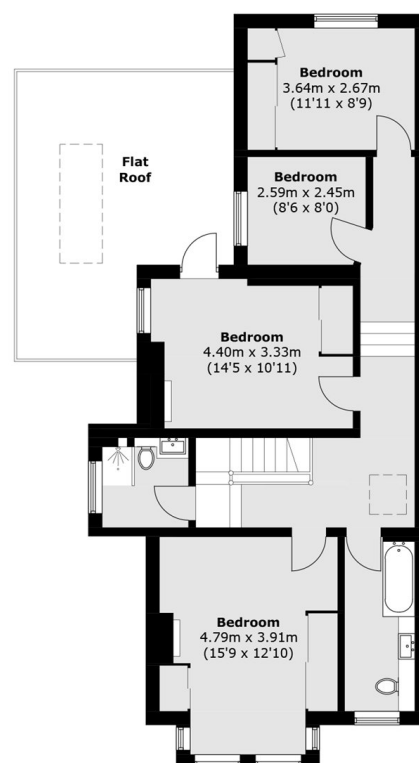
Ground Floor



Lower Ground Floor



Ground Floor



First Floor

Total area (approx.): 240.3 sq. m (2586.4 sq. ft)

Garages : 54.9 sq. m (590.9 sq. ft)

Music Studio : 8.2 sq. m (88.2 sq. ft)