



{ RENMUIR STREET LONDON SW17
£2,100 PER MONTH AVAILABLE 14/01/2026

Hamptons
THE HOME EXPERTS

{ THE PARTICULARS

Renmuir Street London SW17

£2,100 Per Month
Unfurnished

 2 Bedrooms
 1 Bathroom
 1 Reception

Features

- Period conversion, - Close to transport, - Private garden, - Unfurnished, - Great condition throughout, - Wandsworth council

Council Tax

Council Tax Band C

Hamptons
11-13 Bedford Hill
London, SW12 9ET
020 8618 2014
Balhamlettings@hamptons.co.uk
www.hamptons.co.uk

{ A GARDEN FLAT IN A PERIOD CONVERSION CLOSE TO TOOTING HIGH STREET

The Property

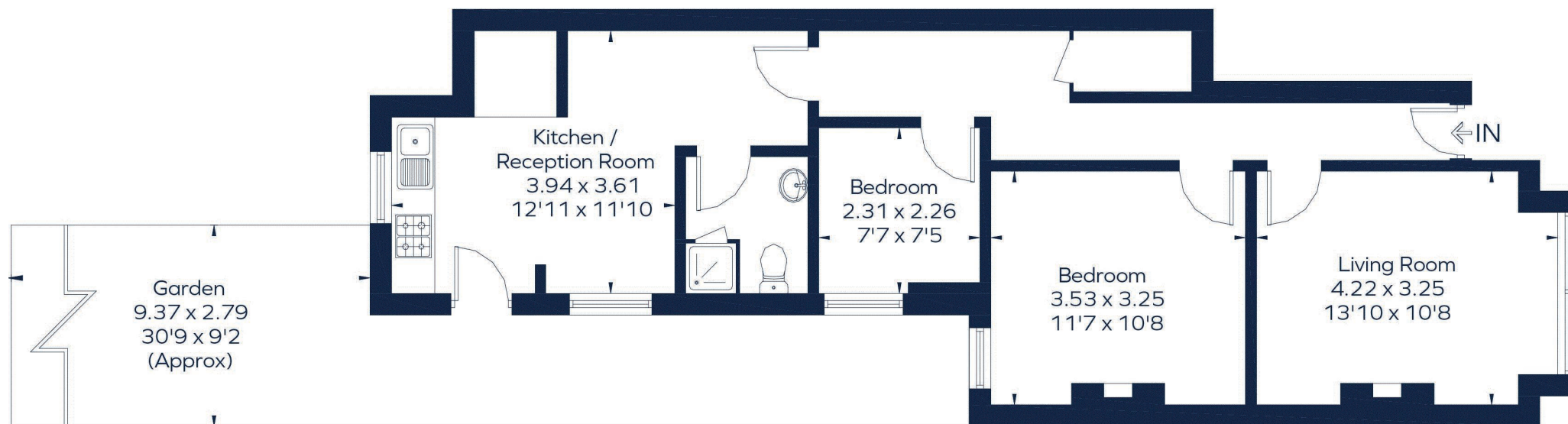
This stunning ground floor garden flat spans just under 700 sq ft in size and is presented in great condition. The property comprises of one large double bedroom and one slightly smaller single/study room. The property also boasts a charming reception room that is naturally light and has high ceilings, as well as an eat in kitchen/diner at the rear of the property. From the kitchen, you have direct access out into a private rear garden that is grass with a small decked area at the back. This ground floor flat is situated in a popular residential road close proximity to both Tooting Broadway (Northern Line) and Tooting Rail Station. The property is close to a good selection of bars, restaurants, shops and Tooting Market and locals schools and St Georges Hospital. This property is advertised on an unfurnished basis and available to move in immediately. Council tax: Wandsworth band C.



RENMUIR STREET

Approximate Gross Internal Area

681 sq. ft. (63.3 sq. m.)



Ground Floor

This plan is for layout guidance only. Not drawn to scale unless stated. Windows and door openings are approximate. Whilst every care is taken in the preparation of this plan, please check all dimensions, shapes and compass bearings before making any decisions reliant upon them. ID 767127

For Clarification

We wish to inform prospective tenants that we have prepared these particulars as a general guide and they have been confirmed as accurate by the landlord. We have not verified permissions, nor carried out a survey, tested the services, appliances and specific fittings. Room sizes are approximate and measurement figures rounded: they are taken between internal wall surfaces and therefore include cupboards/shelves, etc. Accordingly, they should not be relied upon for

carpets and furnishings. It should also be noted that all fixtures and fittings, carpeted, curtains/blinds, kitchen equipment and garden statuary, whether fitted or not, are deemed removable by the landlord unless specifically itemised with these particulars. Please enquire in office or on our website for details on holding deposit and tenancy deposit figures.

