



Onslow Crescent, SW7

£1,500,000

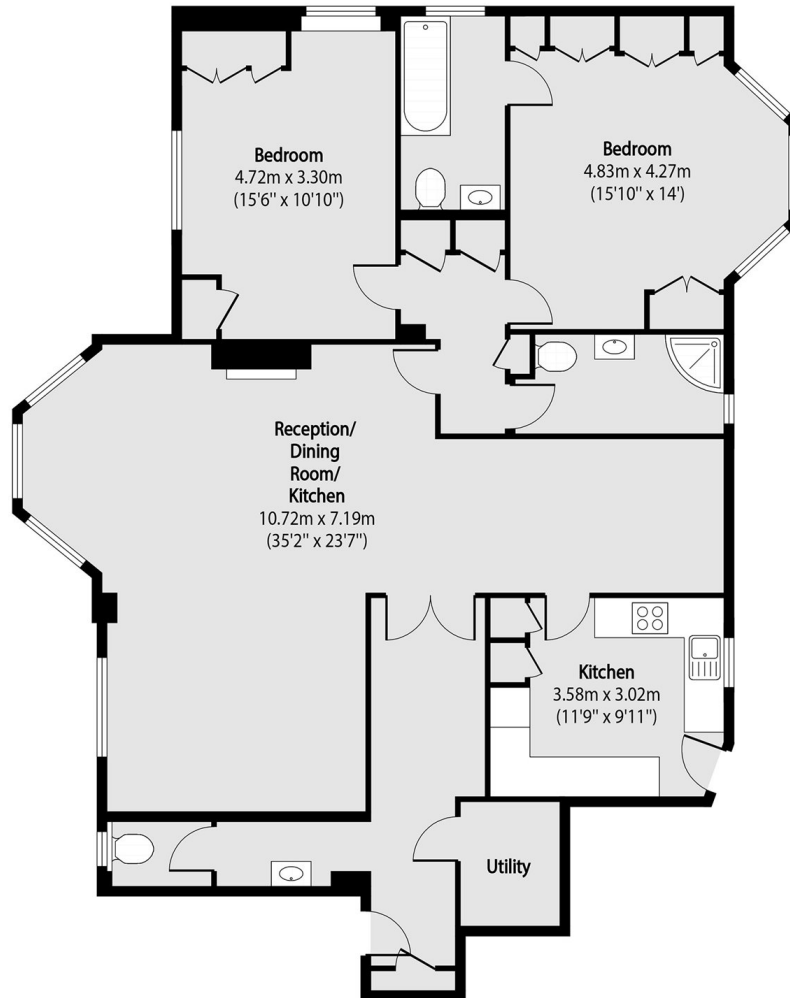
A large and bright first floor flat located in a portered building in the heart of South Kensington. The accommodation offers two double bedrooms with excellent storage, two bathrooms and a utility room providing optimal convenience. There is a spacious reception room with separate dining area leading to a fully fitted kitchen.

Perfectly located opposite South Kensington Station, this property provides excellent transport links across London. It further benefits from the amenities of both Chelsea and South Kensington, as well as being only a short walk away from the serenity of Hyde Park.

Features

- Two Double Bedrooms
- Long Lease 900+ years
- Two Bathrooms
- Large Reception
- Separate Dining Area
- Close To Amenities

Onslow Crescent, London, SW7



Total area (approx): 124.58 sq m (1341 sq. ft)