



351 Cranmore Avenue, Swindon

Swindon

mcfarlane

# 351 Cranmore Avenue

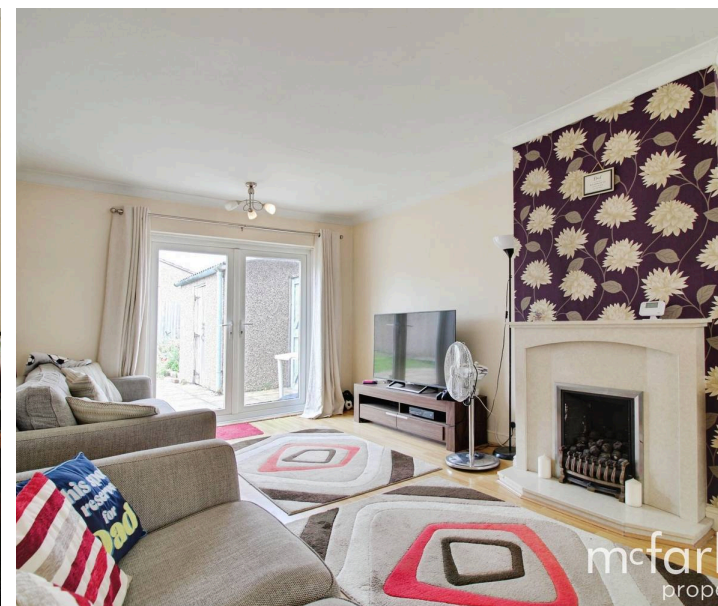
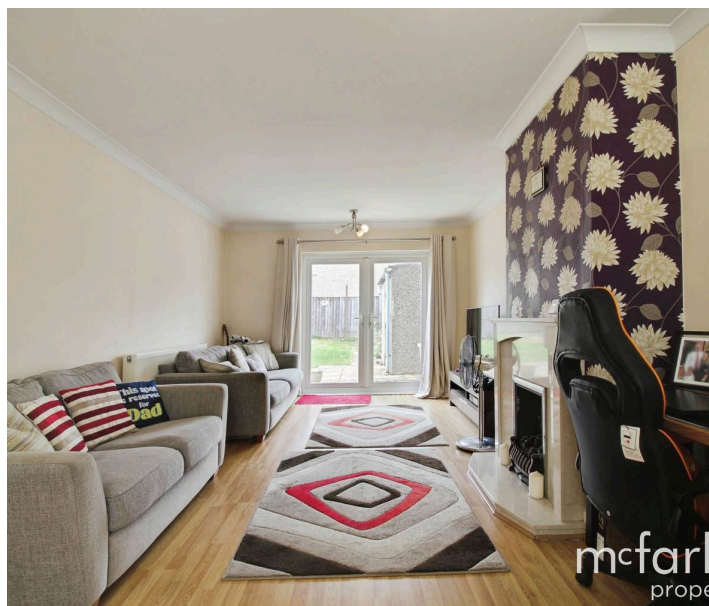
Swindon, SN3

This extended three bedroom end-terrace property offers spacious and well presented accommodation, ideal for families and first-time buyers alike, and is available with no onward chain.

Upon entering the property, you are welcomed by an inviting entrance hall leading through to a generously sized living room, providing a comfortable and versatile space for both relaxing and entertaining. To the rear, a great sized kitchen offers ample storage and worktop space, with direct access to the enclosed rear garden, perfect for outdoor dining and low maintenance living.

Upstairs, the property boasts three well proportioned bedrooms, each thoughtfully arranged to maximise space and natural light. These are served by a modern white family bathroom suite, finished to a clean and contemporary standard.

Externally, the home benefits from driveway parking to the front, while the rear features a private, enclosed garden designed for ease of upkeep.





## 351 Cranmore Avenue

Swindon, SN3

Extended three bed end-terrace with spacious living room, modern kitchen with garden access, and enclosed low maintenance rear garden. Upstairs offers three well-proportioned bedrooms and a contemporary family bathroom. Driveway parking. No onward chain.

Council Tax band: B

Tenure: Freehold

EPC Energy Efficiency Rating: D

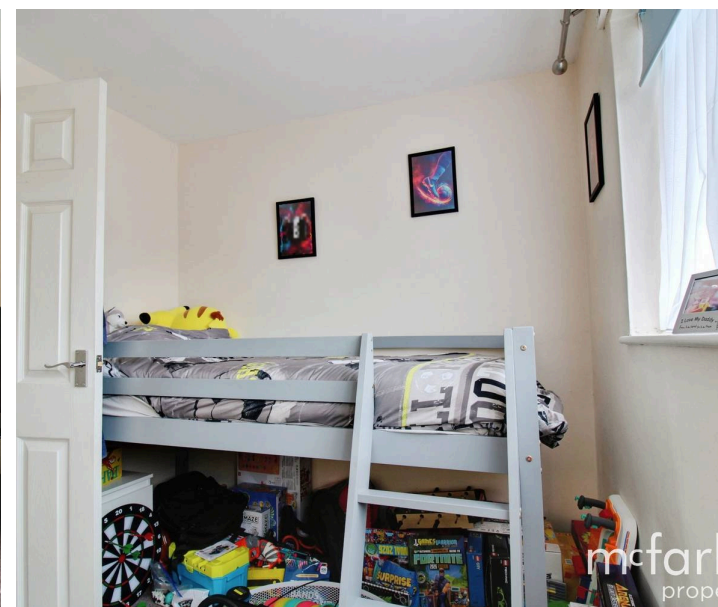
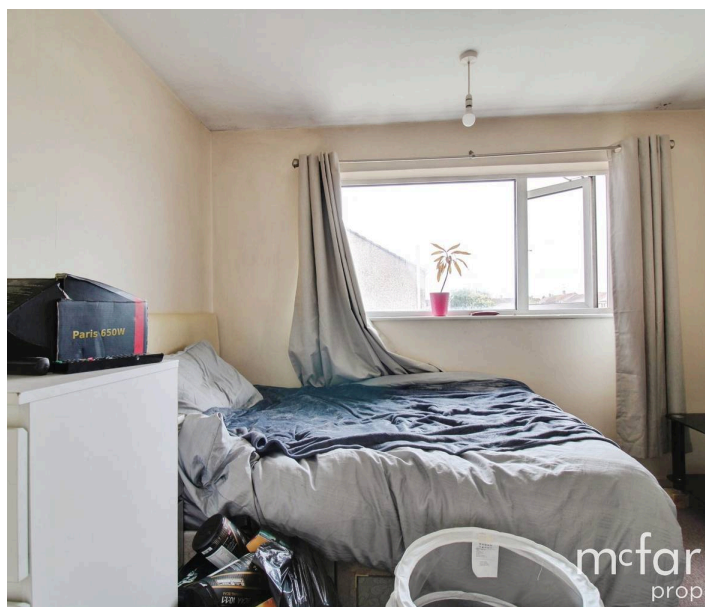
EPC Environmental Impact Rating: D



# 351 Cranmore Avenue

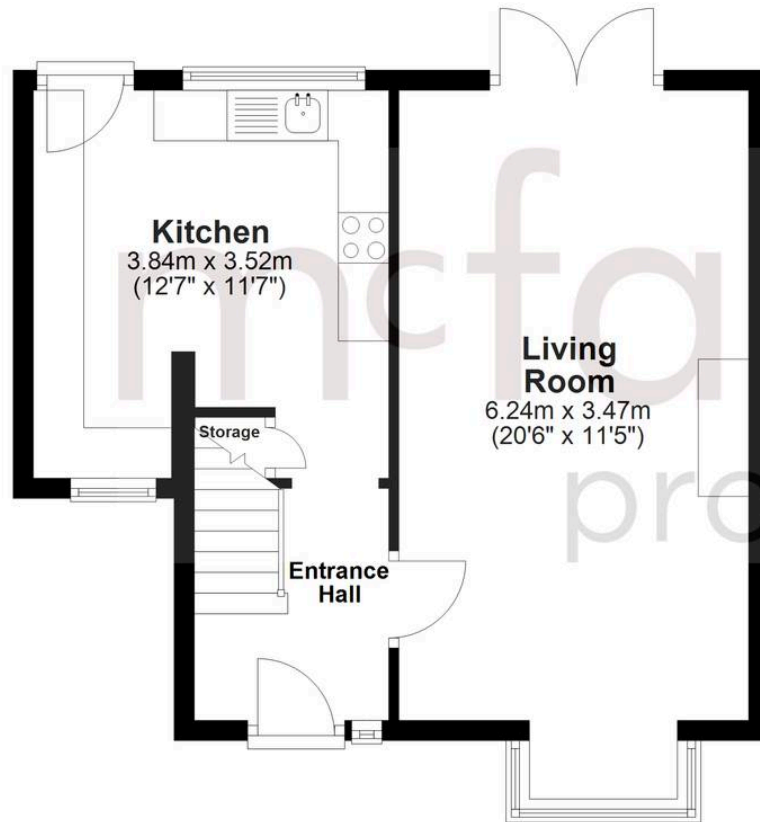
Swindon, SN3

- THREE BEDROOM END TERRACED
- DRIVEWAY PARKING
- ENCLOSED REAR GARDEN
- NO ONWARD CHAIN
- SPACIOUS LIVING ACCOMODATION
- SN3 LOCATION



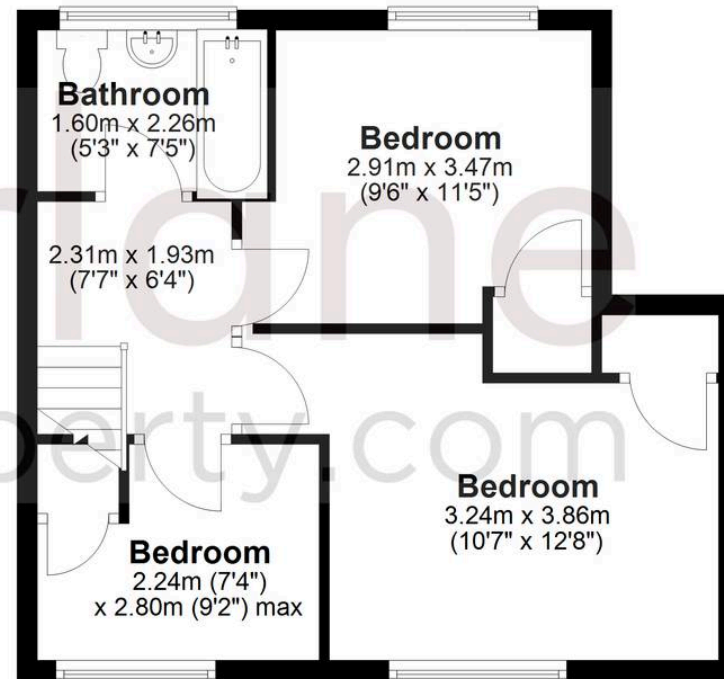
## Ground Floor

Approx. 41.4 sq. metres (445.9 sq. feet)



## First Floor

Approx. 38.8 sq. metres (417.2 sq. feet)



Total area: approx. 80.2 sq. metres (863.1 sq. feet)

## McFarlane Sales & Lettings

McFarlane Sales & Letting Ltd, 28-30 Wood Street - SN1 4AB

01793 611841 • [lettings@mcfarlaneproperty.com](mailto:lettings@mcfarlaneproperty.com) • [www.mcfarlaneproperty.com/](http://www.mcfarlaneproperty.com/)

**mcfarlane**  
property.com