



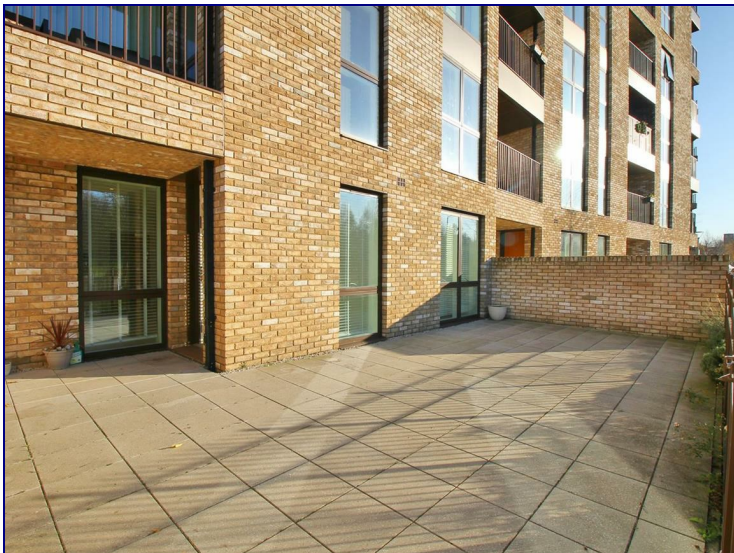
www.kings-group.net

488 Bethnal Green Road

London E2 0EA

Tel: 0207 613 2121

4 Lakeside Drive Park Royal, London, NW10 7GD



£1,700 Per Month

1 Bedroom, 1 Bathroom apartment situated in the prestigious Royal Waterside development. This luxury development is located in West London's newest village, just a short distance from London Underground stations including Park Royal Station.

The development benefits from beautiful lakes, landscaped greenery, and access to a 20-acre nature reserve. The apartment features a private balcony, underground parking, and high-quality modern fixtures and fittings throughout.

Excellent transport links into Central London are nearby, with Park Royal Station (Piccadilly Line) approximately 7 minutes' walk away, and Hanger Lane Station (Central Line) approximately 14 minutes' walk away.



