



**Schubert Road, SW15**

**£765,000**

**Dexters**



## Schubert Road, SW15

A bright and well-presented three bedroom split-level apartment arranged over the upper floors of an attractive period building on the prestigious Schubert Road.

The property offers a spacious open plan kitchen/reception/dining room on the top floor, flooded with natural light from multiple skylights and featuring modern fitted units, integrated appliances and wood flooring. There is direct access to a private balcony, ideal for morning coffee or evening drinks. The second floor comprises three well-proportioned bedrooms and two bathrooms, making it ideal for sharers or families.

Schubert Road is a quiet residential street moments from the green open spaces of Putney Heath and Richmond Park, while the cafés, shops and restaurants of Putney High Street are within easy reach. Transport links are excellent, with Putney mainline station (National Rail), East Putney underground (District Line) and numerous bus routes providing quick access into Central London and beyond.

### Features

- Chain Free
- 1,047 Sq. Ft
- Three Bedrooms
- Two Bathrooms
- Private Balcony
- East Putney Location



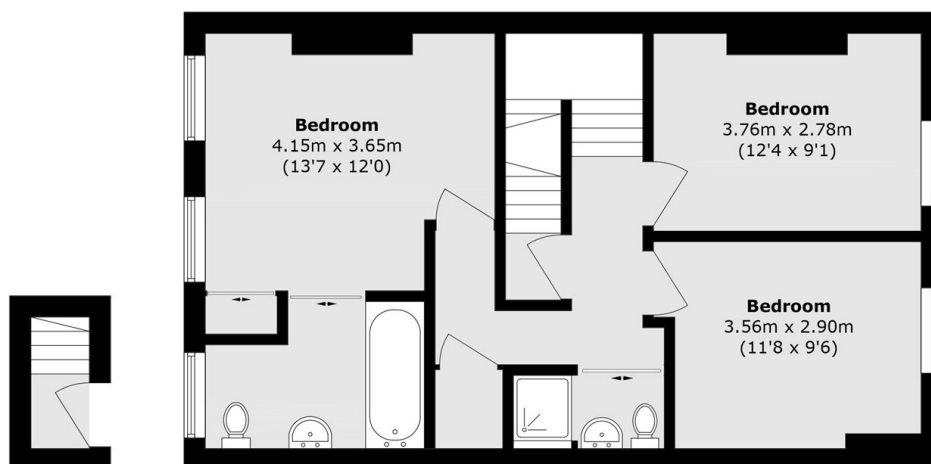




# Schubert Road, London, SW15



**Third Floor**



**First Floor**

**Second Floor**

Total area (approx.): 97.3 sq. m (1047.3 sq. ft)  
Balcony area (approx.): 2.1 sq. m (22.6 sq. ft)  
(Excluding Eaves)