



Prince of Wales Road

London, NW5

Asking Price £650,000

Arranged over raised and lower ground floors of a period building is this two bedroom maisonette benefitting from a private garden. The lower ground floor opens into an entrance hall leading to a separate kitchen and a reception room, which is currently being used as a bedroom. This level also features a bathroom and provides direct access to a private patio, leading up to a generous rear garden, offering an excellent outdoor space. The upper ground floor comprises two bedrooms, including a principal bedroom, along with a separate WC. The layout is practical and well balanced, making the accommodation suitable for a range of living arrangements.

CHESTERTONS



Prince of Wales Road

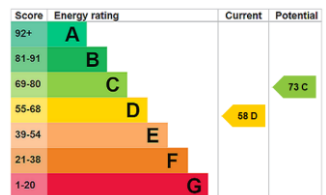
London, NW5

- Two Bedrooms
- Private Garden
- Excellent Location
- Chain Free
- Modernisation Required



Prince of Wales Road is a fantastic location close to the amenities, shops, bars and restaurants of Kentish Town, as well as outstanding schools and within easy reach of Camden Town and Chalk Farm. The green open spaces of Primrose Hill and Parliament Hill / Hampstead Heath are nearby and transport is excellent with Kentish Town West and Kentish Town stations in very easy reach.

Tenure: Leasehold with 96 years remaining
Service Charge: £500 per annum
Ground Rent: £10 per annum
Local Authority: Camden
Council Tax Band: D



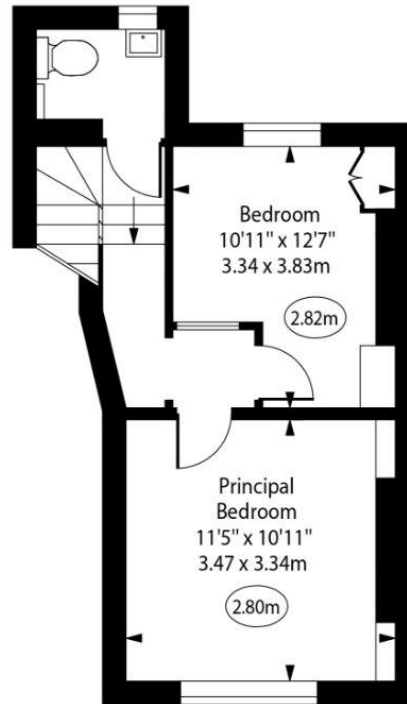
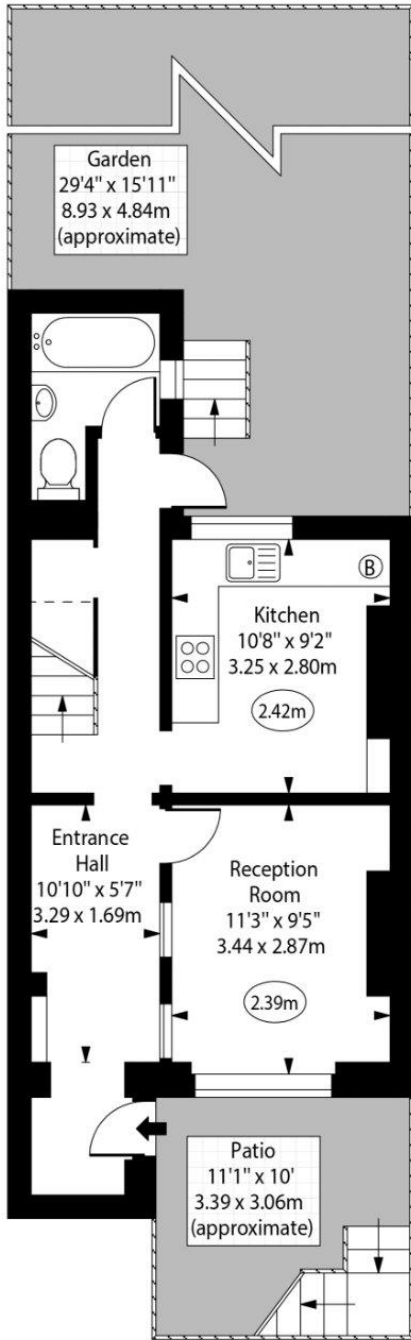
Chestertons Camden & Kentish Town Sales

99-101 Parkway
 Camden
 London
 NW1 7PP
 camden@chestertons.co.uk
 020 7267 2053
 chestertons.co.uk

Prince of Wales Road



○ - Ceiling Height



Lower Ground Floor
Gross Internal Area - 410 Sq Ft - 38.09 Sq M

Upper Ground Floor
Gross Internal Area - 305 Sq Ft - 28.33 Sq M

Approx Gross Internal Area 715 Sq Ft - 66.33 Sq M

Every attempt has been made to ensure the accuracy of the floor plan shown. However, all measurements, fixtures, fittings, and data shown are approximate interpretations and for illustrative purposes only. Measured according to the RICS. Not To Scale.

www.goldlens.co.uk
Ref. No. 030457J

